

D

C

B

A

A2

DWG. NO. 69-000635 | REV. 0

8

7

6

5

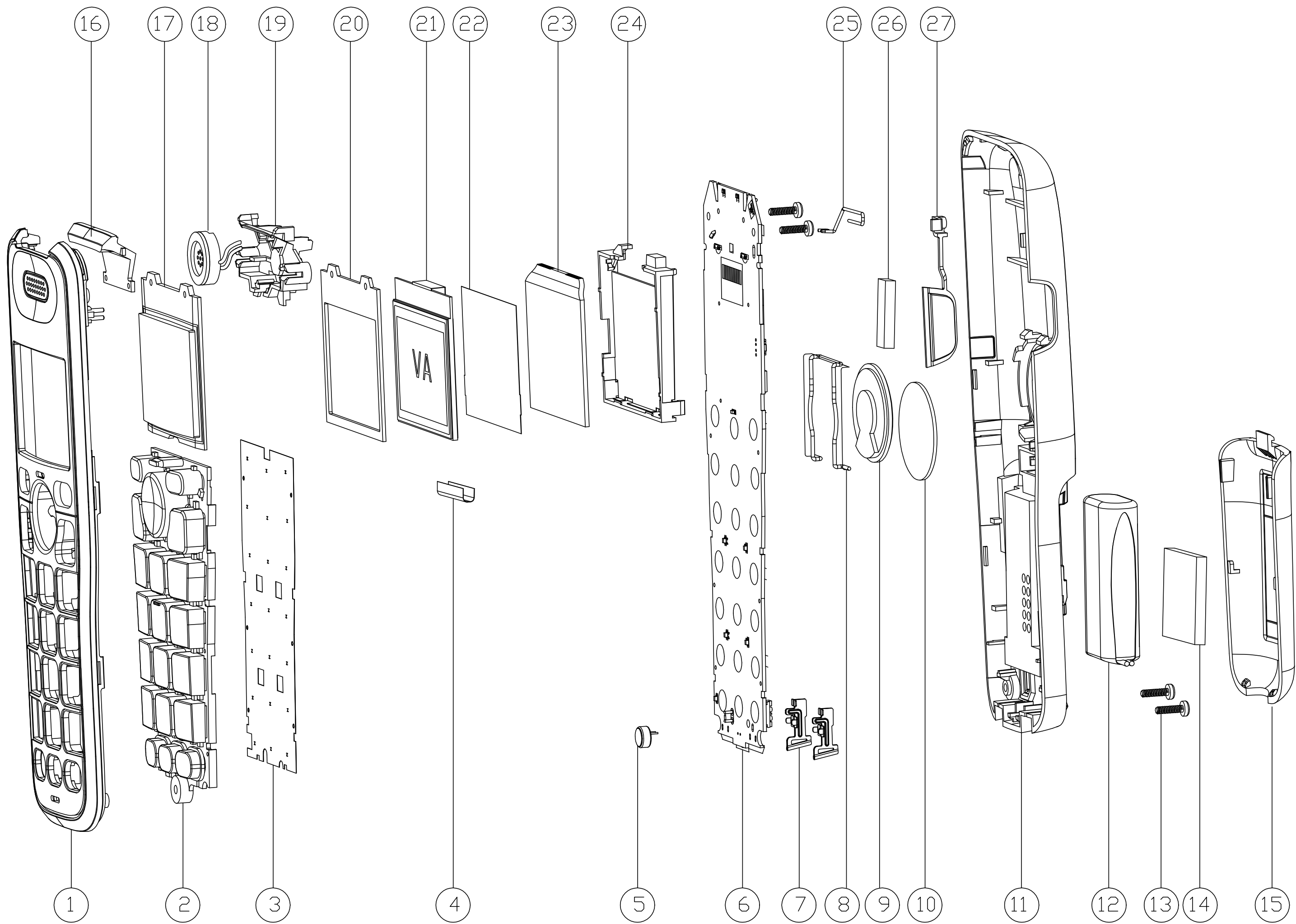
4

3

2

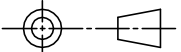
1

REVISION					
REV	ZONE	DESCRIPTION		DRAWN	CHECKED
0	ALL	RELEASE FOR PRODUCTION			04Jun2025



15	30-013562-012-100	BATT DOOR	1
14	39-007349-000-700	BATT DOOR SPONGE	1
13	10-003013-002-100	SCREW	4
12	29-224050-210-1A0	BATT NI-MH PACK	1
11	30-013561-022-120	HS REAR	1
10	32-005791-010-100	SPK FELT	1
9	28-002094-003-100	SPEAKER	1
8	34-005731-000-100	SPK BRACKET	1
7	31-006423-000-100	METAL SHT PART	2
6	35-200405-002-100	HS MAIN PCB	1
5	28-001057-005-100	MIC	1
4	40-004693-000-100	HEAT SEAL CONN	1
3	49-001322-000-100	METAL DOME	1
2	39-008424-150-100	HS KEYPAD	1
1	30-013560-152-100	FRONT HS	1
ITEM	Part No.	DESCRIPTION	QTY

27	30-013564-110-100	HS SIDE KEY	1
26	39-008601-000-400	HS SIDE KEY FOAM	1
25	34-006578-000-100	ANTENNA WIRE	1
24	30-013567-002-100	LCD HOLDER	1
23	30-013568-000-100	DIFFUSER LCD	1
22	32-007373-002-1V1	DIFFUSER SHEET	1
21	43-021149-300-100	LCD PANEL	1
20	39-008423-000-400	LCD FOAM	1
19	30-013566-002-100	HS RECEIVER HOLDER	1
18	28-001322-004-101	RECEIVER	1
17	30-013563-000-100	HS LENS	1
16	30-013565-000-100	LIGHT GUIDE	1
ITEM	Part No.	DESCRIPTION	QTY

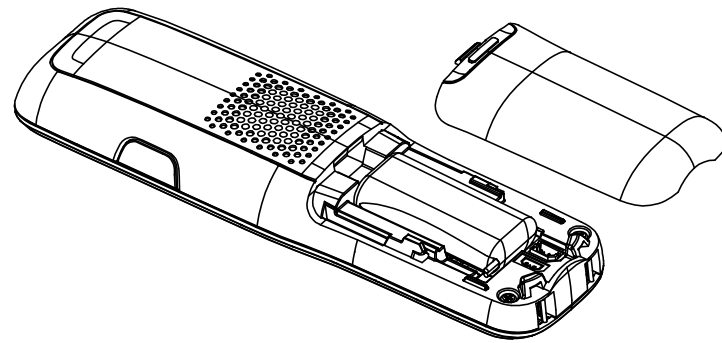
THIRD ANGLE PROJECTION		CREATED BY		GEEMARC TELECOM		
		NAME				
SIZE	A2	UNIT IN	MM	DATE	04Jun2025	TITLE HS EXPLODED DRAWING
FIRST USED ON	AMPLIDIRECT295		CHECKED BY			
TOLERANCE UNLESS OTHERWISE STATED				NAME		
ONE D.P. (.X) ± 0.2 TWO D.P. (.XX) ± 0.1 HOLE DIA. VARIANCE ± 0.1 ANGULAR ± 0.5°				THE INFORMATION HEREON IS THE PROPERTY OF THE COMPANY. NO REPRODUCTION OR UNAUTHORIZED USE IN PART OR IN WHOLE SHALL BE MADE WITHOUT WRITTEN CONSENT OF THE COMPANY AUTHORITY.		
SCALE	NOT IN SCALE		DRAWING NO.		69-000635	TOOL NO. N/A
SHEET	1 OF 1		MATERIAL		N/A	
			FINISH		N/A	

D

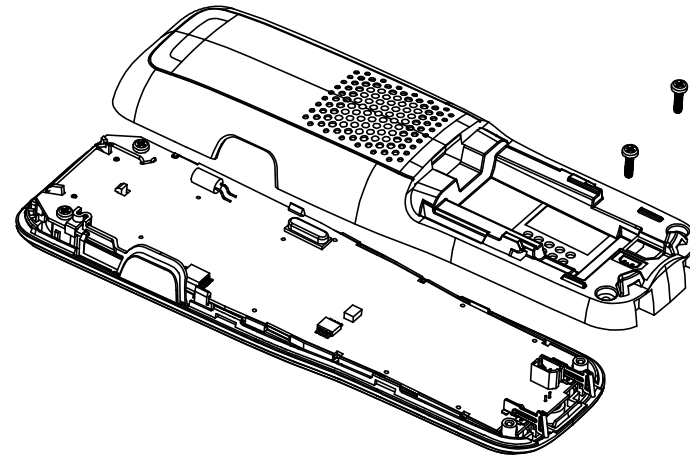
C

B

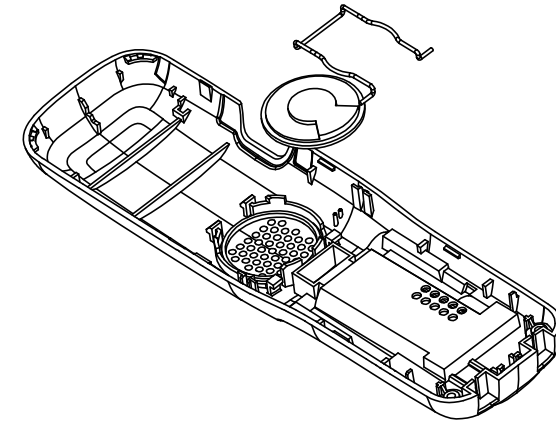
A



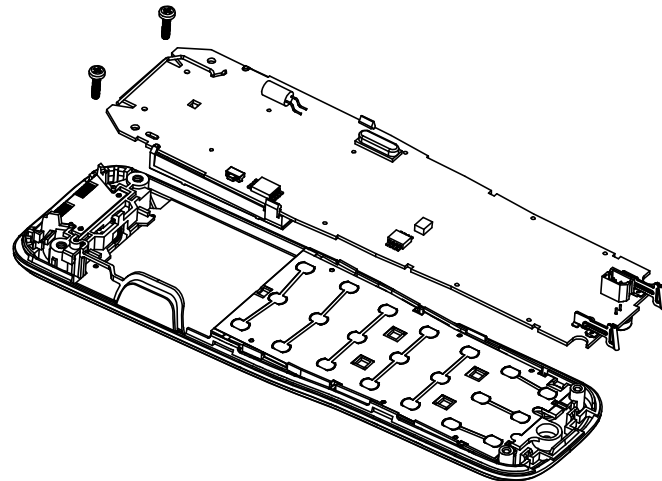
STEP 1:
OPEN BATTERY DOOR



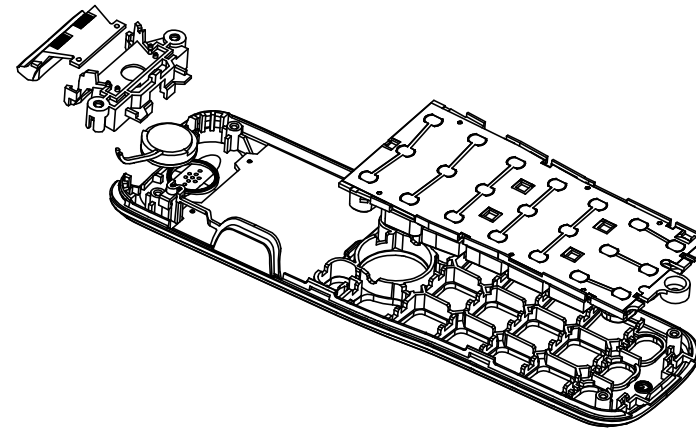
STEP 2:
OPEN HS REAR CASE WITH
SCREW DRIVER



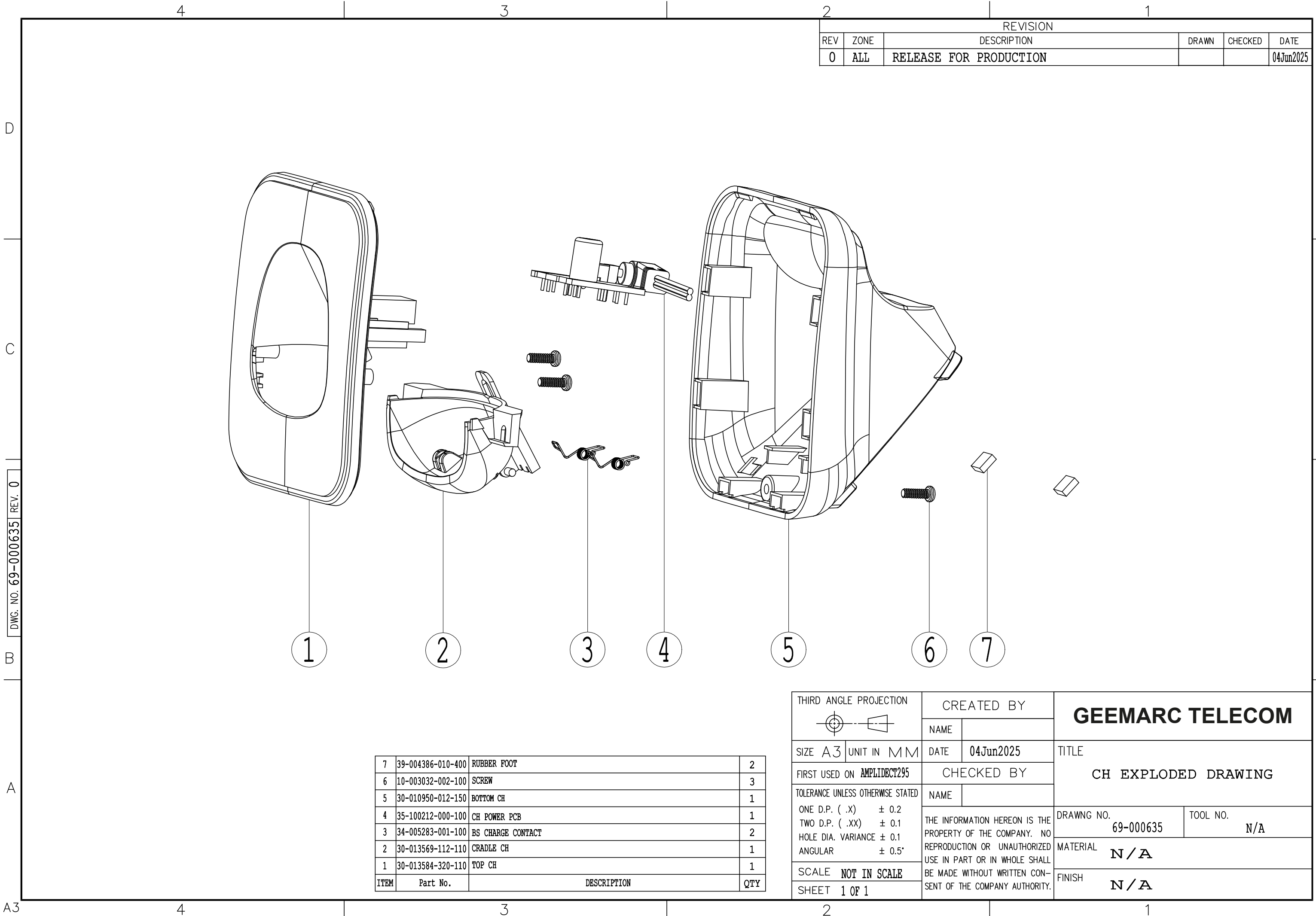
STEP 3:
REMOVE SPEAKER BRACKET
AND DESOLDER SPEAKER WIRE
TO REPLACE NEW SPEAKER



STEP 4:
DISPART HS MAIN PCB WITH SCREW DRIVER

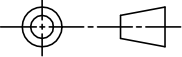


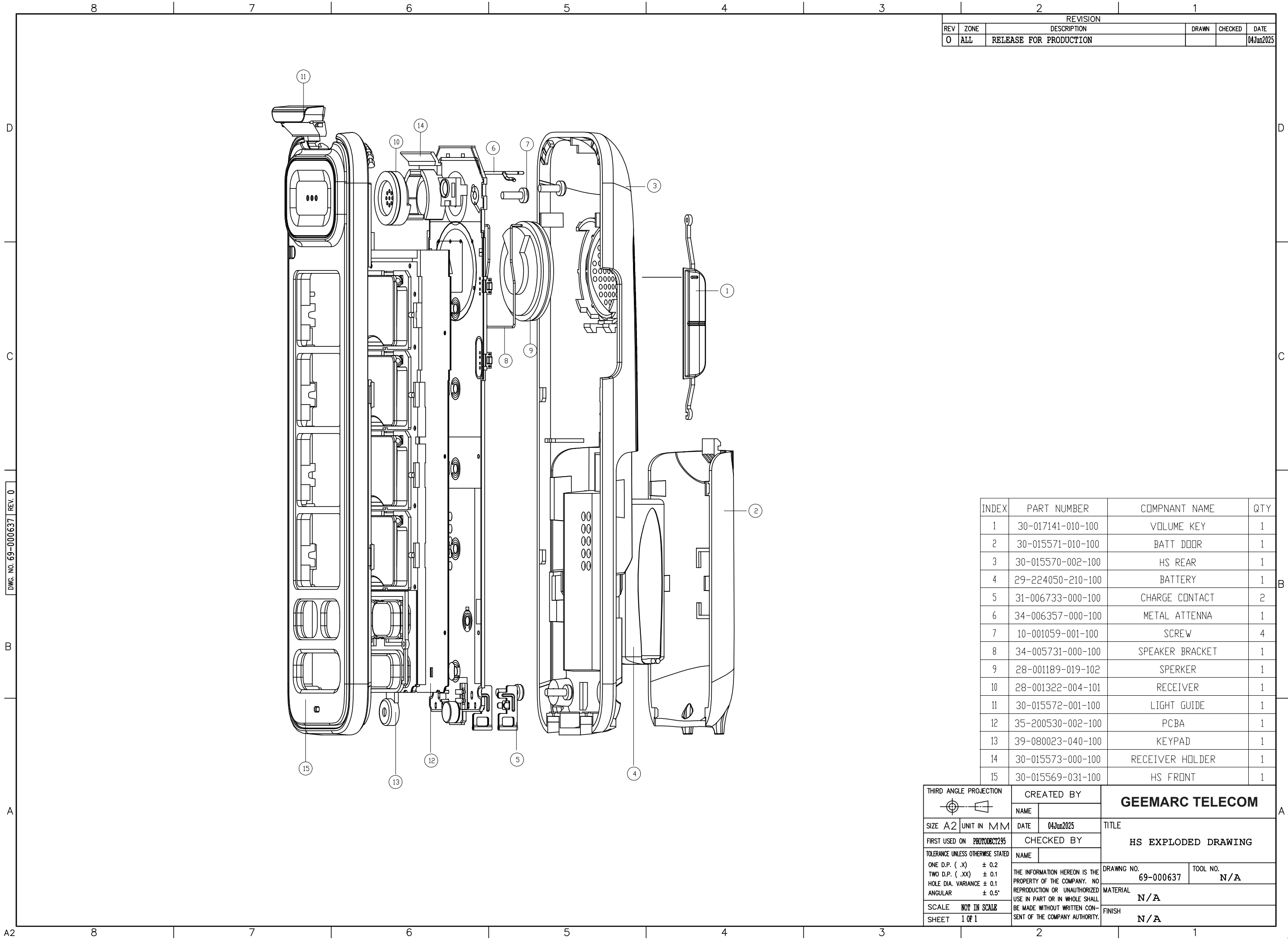
STEP 5:
DISPART RECEIVER BRACKET AND REPLACE NEW
RECEIVER.



REVISION					
REV	ZONE	DESCRIPTION			DATE
0	ALL	RELEASE FOR PRODUCTION			04Jun2025

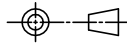
7	39-004386-010-400	RUBBER FOOT	2
6	10-003032-002-100	SCREW	3
5	30-010950-012-150	BOTTOM CH	1
4	35-100212-000-100	CH POWER PCB	1
3	34-005283-001-100	BS CHARGE CONTACT	2
2	30-013569-112-110	CRADLE CH	1
1	30-013584-320-110	TOP CH	1
ITEM	Part No.	DESCRIPTION	QTY

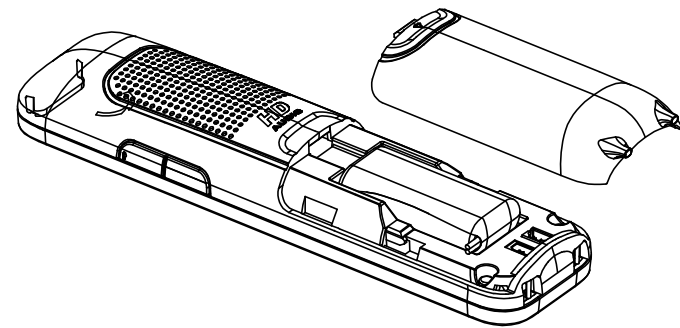
THIRD ANGLE PROJECTION 		CREATED BY		GEEMARC TELECOM			
		NAME					
SIZE	A3	UNIT IN	MM	DATE	04Jun2025	TITLE CH EXPLODED DRAWING	
FIRST USED ON		AMPLIDECT295		CHECKED BY			
TOLERANCE UNLESS OTHERWISE STATED ONE D.P. (.X) ± 0.2 TWO D.P. (.XX) ± 0.1 HOLE DIA. VARIANCE ± 0.1 ANGULAR ± 0.5°		NAME		DRAWNG NO. 69-000635			
		THE INFORMATION HEREON IS THE PROPERTY OF THE COMPANY. NO REPRODUCTION OR UNAUTHORIZED USE IN PART OR IN WHOLE SHALL BE MADE WITHOUT WRITTEN CONSENT OF THE COMPANY AUTHORITY.					
		SCALE		NOT IN SCALE		MATERIAL	
SHEET		1 OF 1		FINISH		N / A	



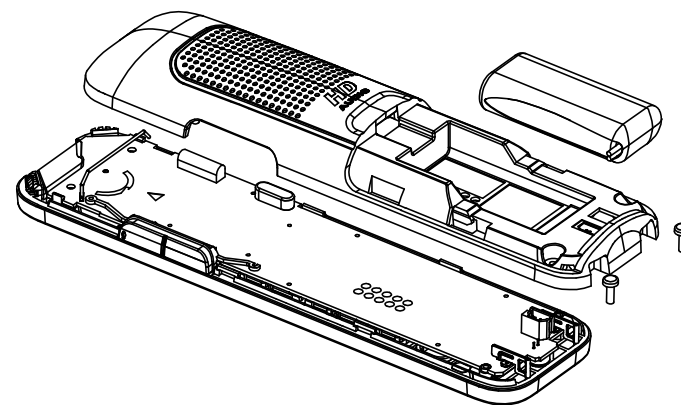
REVISION					
REV	ZONE	DESCRIPTION		DRAWN	CHECKED
0	ALL	RELEASE FOR PRODUCTION			04Jun2025

INDEX	PART NUMBER	COMPNANT NAME	QTY
1	30-017141-010-100	VOLUME KEY	1
2	30-015571-010-100	BATT DOOR	1
3	30-015570-002-100	HS REAR	1
4	29-224050-210-100	BATTERY	1
5	31-006733-000-100	CHARGE CONTACT	2
6	34-006357-000-100	METAL ANTENNA	1
7	10-001059-001-100	SCREW	4
8	34-005731-000-100	SPEAKER BRACKET	1
9	28-001189-019-102	SPERKER	1
10	28-001322-004-101	RECEIVER	1
11	30-015572-001-100	LIGHT GUIDE	1
12	35-200530-002-100	PCBA	1
13	39-080023-040-100	KEYPAD	1
14	30-015573-000-100	RECEIVER HOLDER	1
15	30-015569-031-100	HS FRONT	1

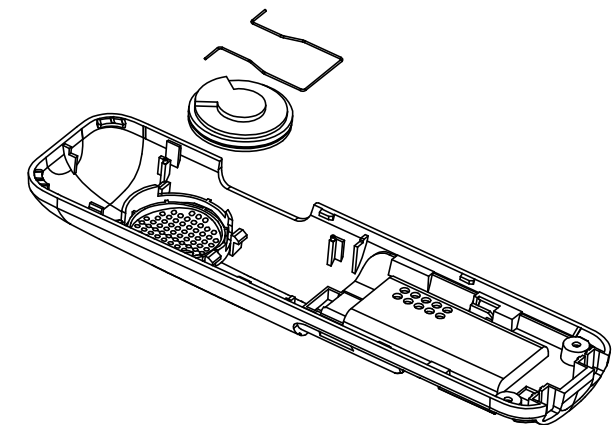
THIRD ANGLE PROJECTION		CREATED BY		GEEMARC TELECOM	
		NAME			
SIZE A2	UNIT IN MM	DATE	04Jun2025	TITLE HS EXPLODED DRAWING	
FIRST USED ON	PHOTOBOCT295	CHECKED BY			
TOLERANCE UNLESS OTHERWISE STATED ONE D.P. (.X) ± 0.2 TWO D.P. (.XX) ± 0.1 HOLE DIA. VARIANCE ± 0.1 ANGULAR ± 0.5°		NAME		DRAWING NO. 69-000637	
		THE INFORMATION HEREON IS THE PROPERTY OF THE COMPANY. NO REPRODUCTION OR UNAUTHORIZED USE IN PART OR IN WHOLE SHALL BE MADE WITHOUT WRITTEN CONSENT OF THE COMPANY AUTHORITY.		TOOL NO. N/A	
				MATERIAL N/A	
				FINISH N/A	
SCALE	NOT IN SCALE				
SHEET	1 OF 1				



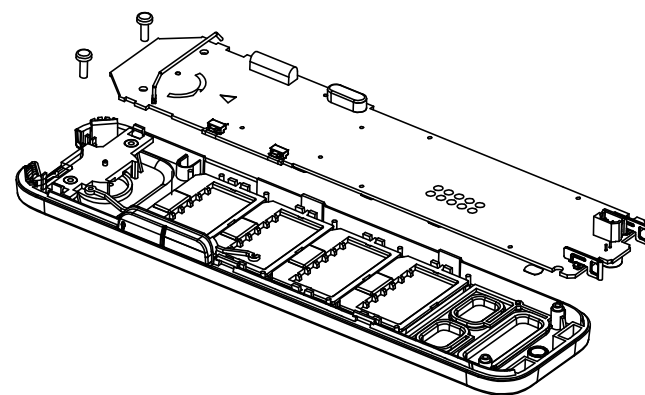
STEP 1:
OPEN BATTERY DOOR



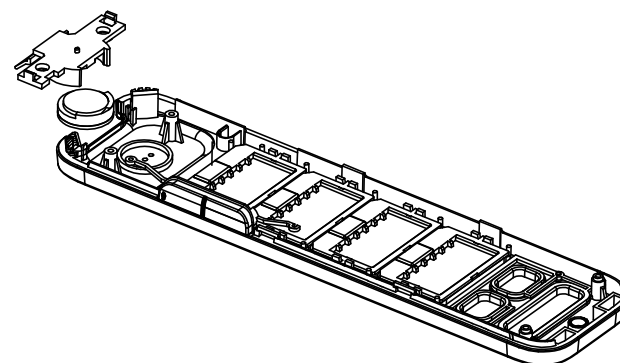
STEP 2:
OPEN HS REAR CASE WITH
SCREW DRIVER



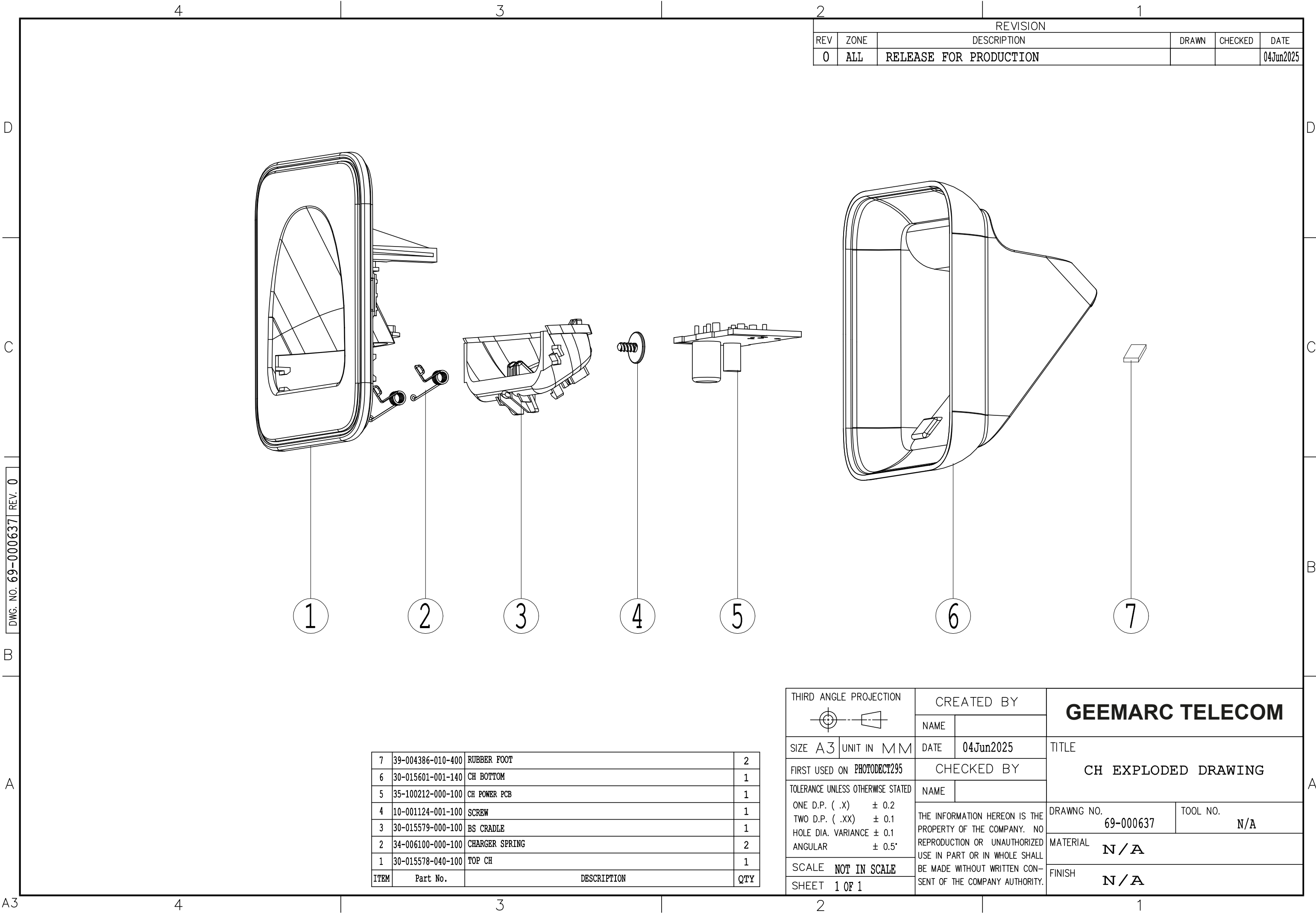
STEP 3:
REMOVE SPEAKER BRACKET
AND DESOLDER SPEAKER WIRE
TO REPLACE NEW SPEAKER



STEP 4:
DISPART HS MAIN PCB WITH SCREW DRIVER

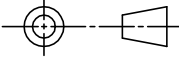


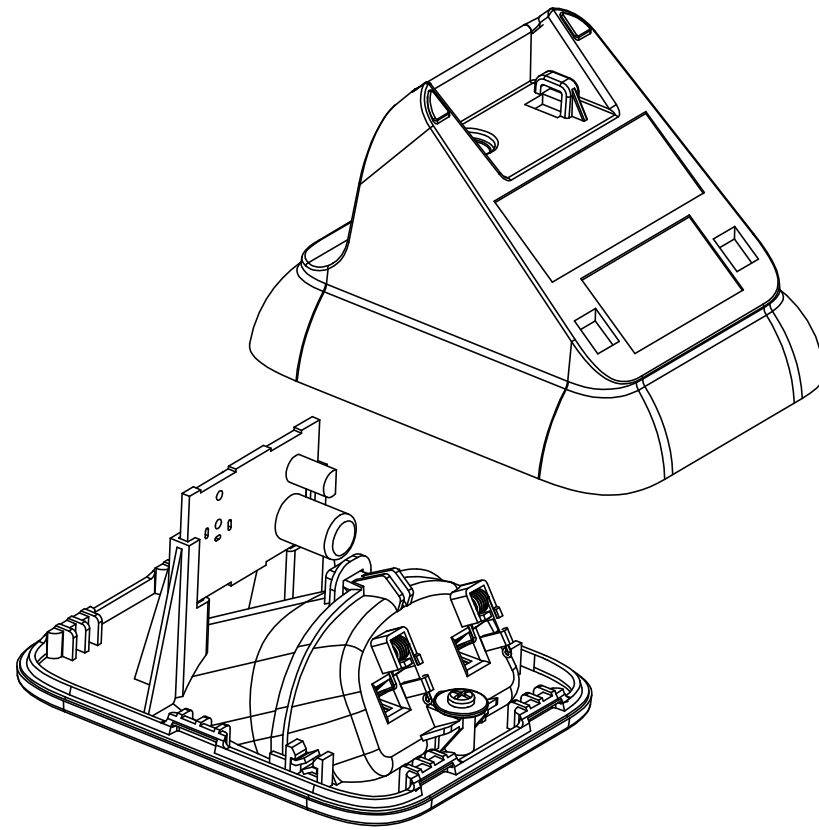
STEP 5:
DISPART RECEIVER BRACKET AND REPLACE NEW
RECEIVER.



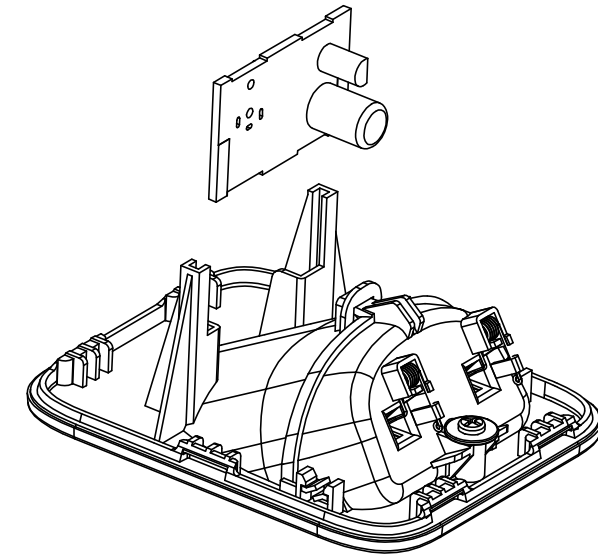
REVISION					
REV	ZONE	DESCRIPTION	DRAWN	CHECKED	DATE
0	ALL	RELEASE FOR PRODUCTION			04Jun2025

7	39-004386-010-400	RUBBER FOOT	2
6	30-015601-001-140	CH BOTTOM	1
5	35-100212-000-100	CH POWER PCB	1
4	10-001124-001-100	SCREW	1
3	30-015579-000-100	BS CRADLE	1
2	34-006100-000-100	CHARGER SPRING	2
1	30-015578-040-100	TOP CH	1
ITEM	Part No.	DESCRIPTION	QTY

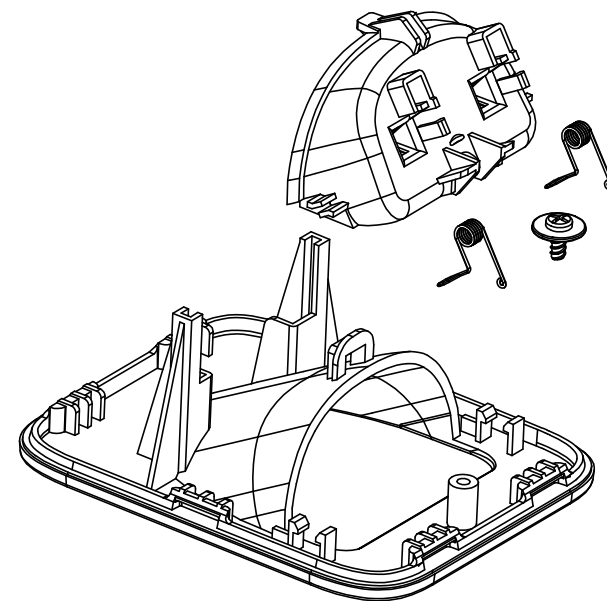
<div>THIRD ANGLE PROJECTION</div> <div></div>		CREATED BY		GEEMARC TELECOM	
		NAME			
SIZE	A3	UNIT IN	MM	DATE	04Jun2025
FIRST USED ON		PHOTODECT295		CHECKED BY	
TOLERANCE UNLESS OTHERWISE STATED ONE D.P. (.X) ± 0.2 TWO D.P. (.XX) ± 0.1 HOLE DIA. VARIANCE ± 0.1 ANGULAR ± 0.5°		NAME		TITLE CH EXPLODED DRAWING	
		THE INFORMATION HEREON IS THE PROPERTY OF THE COMPANY. NO REPRODUCTION OR UNAUTHORIZED USE IN PART OR IN WHOLE SHALL BE MADE WITHOUT WRITTEN CONSENT OF THE COMPANY AUTHORITY.			
SCALE		NOT IN SCALE		DRAWNG NO.	TOOL NO.
SHEET		1 OF 1		69-000637	N/A
				MATERIAL	
				N / A	
				FINISH	
				N / A	



STEP 1:
OPEN CHARGER BOTTOM



STEP 2:
DISPART CHARGER POWER
JACK PCB



STEP 3:
DISPART CHARGER CONTACT ASSEMBLY PART
WITH SCREW DRIVER AND REPLACE NEW CHARGER
SPRING

D

C

B

A

A2

D

C

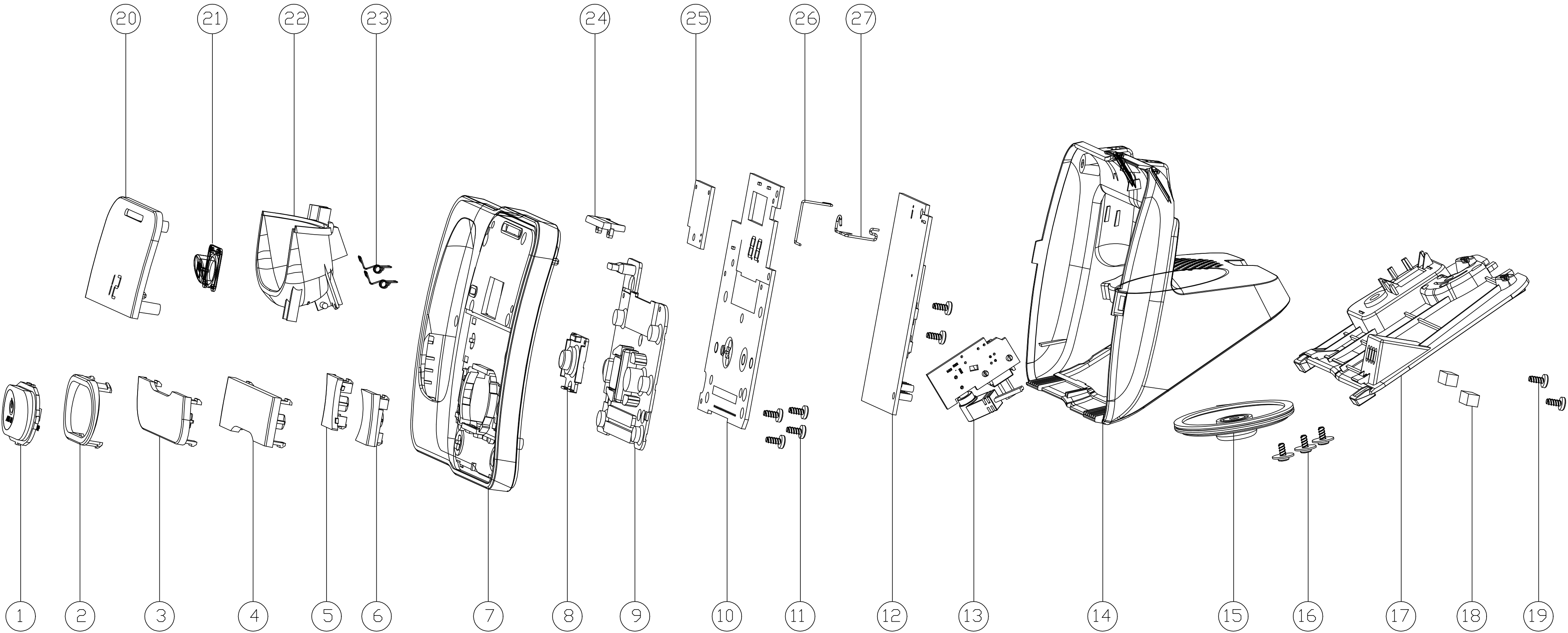
B

A

DWG. NO. 69-000635 REV. 0

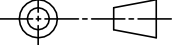
8 7 6 5 4 3 2 1

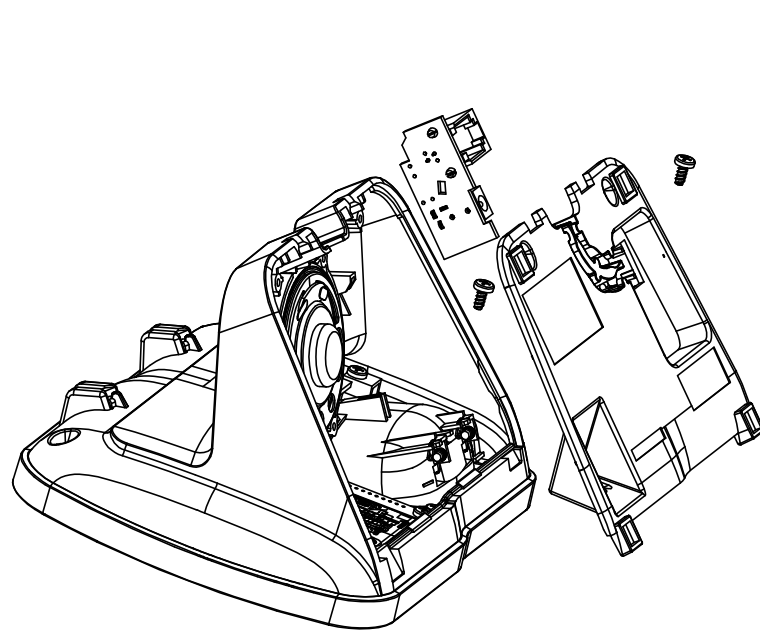
REVISION					
REV	ZONE	DESCRIPTION		DRAWN	CHECKED
0	ALL	RELEASE FOR PRODUCTION			04Jun2025



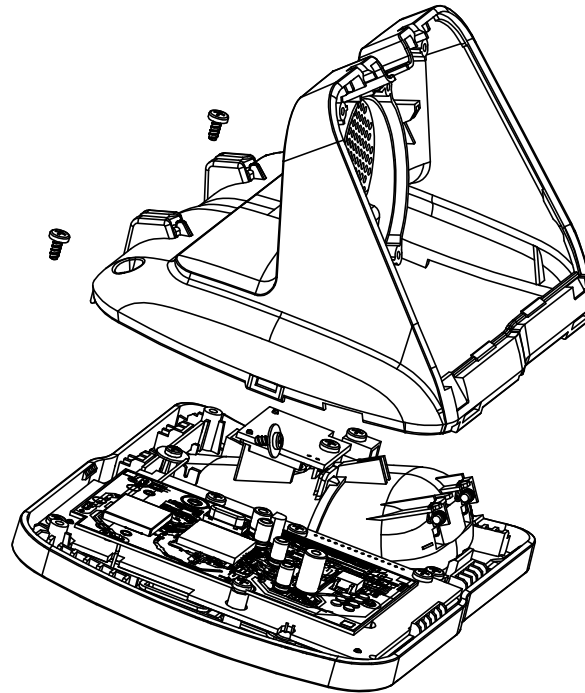
15	28-001295-006-100	SPEAKER	1
14	30-013573-040-120	BS BOTTOM	1
13	35-008516-002-100	BS POWER PCB	1
12	35-200696-002-100	BS MAIN PCB	1
11	10-003031-001-100	SCREW M2.6*6	10
10	35-100303-001-100	BS KEY PCB	1
9	39-008426-001-400	BS RUBBER KEY	1
8	39-008427-000-400	BS PAGE KEY RUBBER	1
7	30-013572-031-110	BS TOP	2
6	30-013580-032-100	BS VOL KEY R	1
5	30-013579-032-100	BS VOL KEY L	1
4	30-013577-030-100	BS REPEAT KEY	1
3	30-013578-030-100	BS DEL KEY	1
2	30-013583-010-100	BS CHROME RING	1
1	30-013581-031-100	BS PLAY KEY	1
ITEM	Part No.	DESCRIPTION	QTY

27	34-005989-000-100	BS ANTENNA-2	1
26	34-005988-000-100	BS ANTENNA-1	1
25	35-008517-000-100	BS PAGE KEY PCB	1
24	30-013635-010-100	LIGHT GUIDE	1
23	34-005283-001-100	BS CHARGE CONTACT	2
22	30-013574-042-110	BS CRADLE	1
21	30-013582-030-100	BS PAGE KEY	1
20	30-013575-070-100	BS LENS	1
19	10-003032-002-100	SCREW M2.6*8	4
18	39-004386-010-400	RUBBER FOOT	4
17	30-013576-023-110	BS BOTTOM COVER	1
16	10-001124-001-100	SCREW M2.6*5*WD9	4
ITEM	Part No.	DESCRIPTION	QTY

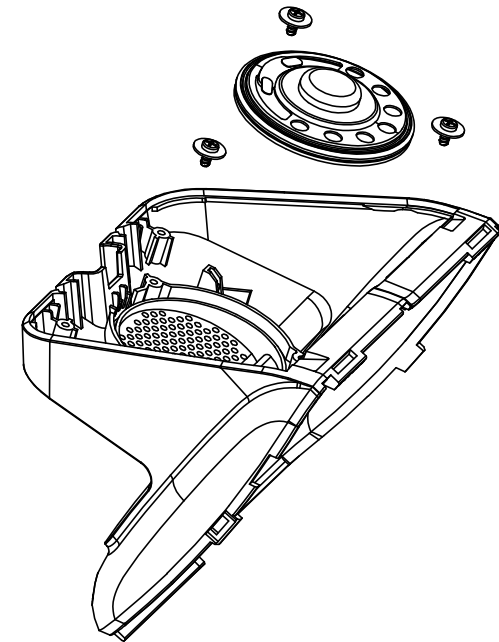
THIRD ANGLE PROJECTION		CREATED BY		GEEMARC TELECOM	
		NAME			
SIZE	A2	UNIT IN	MM	DATE	04Jun2025
FIRST USED ON	AMPLIDIRECT295		CHECKED BY		TITLE BS EXPLODED DRAWING
TOLERANCE UNLESS OTHERWISE STATED			NAME		
ONE D.P. (.X) ± 0.2			THE INFORMATION HEREON IS THE PROPERTY OF THE COMPANY. NO REPRODUCTION OR UNAUTHORIZED USE IN PART OR IN WHOLE SHALL BE MADE WITHOUT WRITTEN CONSENT OF THE COMPANY AUTHORITY.		
TWO D.P. (.XX) ± 0.1					
HOLE DIA. VARIANCE ± 0.1					
ANGULAR ± 0.5°					
SCALE	NOT IN SCALE		DRAWING NO.		TOOL NO.
			69-000635		N/A
			MATERIAL		
			N/A		
			FINISH		
			N/A		
SHEET	1 OF 1				



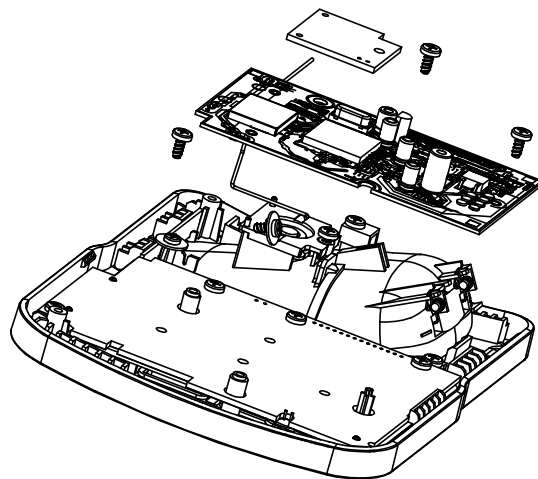
STEP 1:
OPEN BASE BOTTOM COVER WITH
SCREW DRIVER AND DISPART POWER
JACK PCB



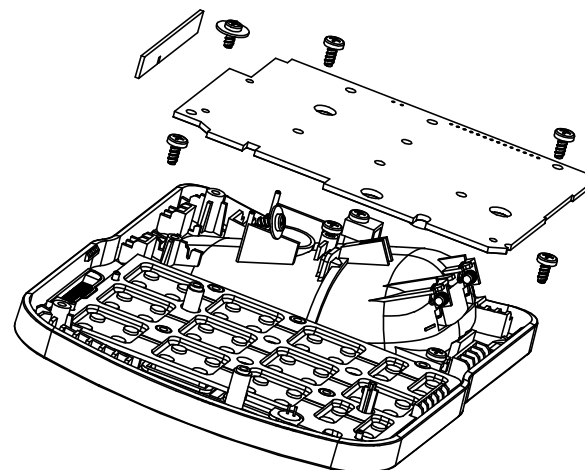
STEP 2:
OPEN BASE BOTTOM WITH
SCREW DRIVER



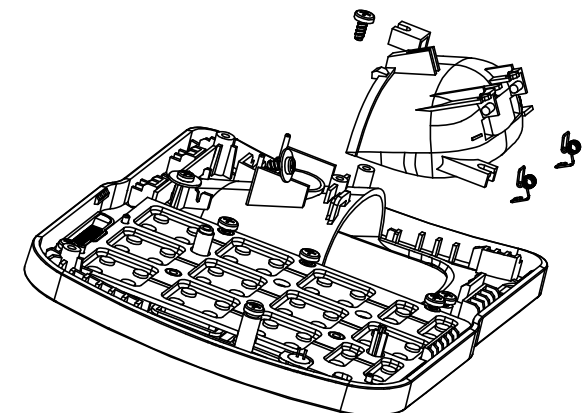
STEP 3:
REMOVE SPEAKER WITH SCREW DRIVER AND DESOLDER
SPEAKER WIRE TO REPLACE NEW SPEAKER



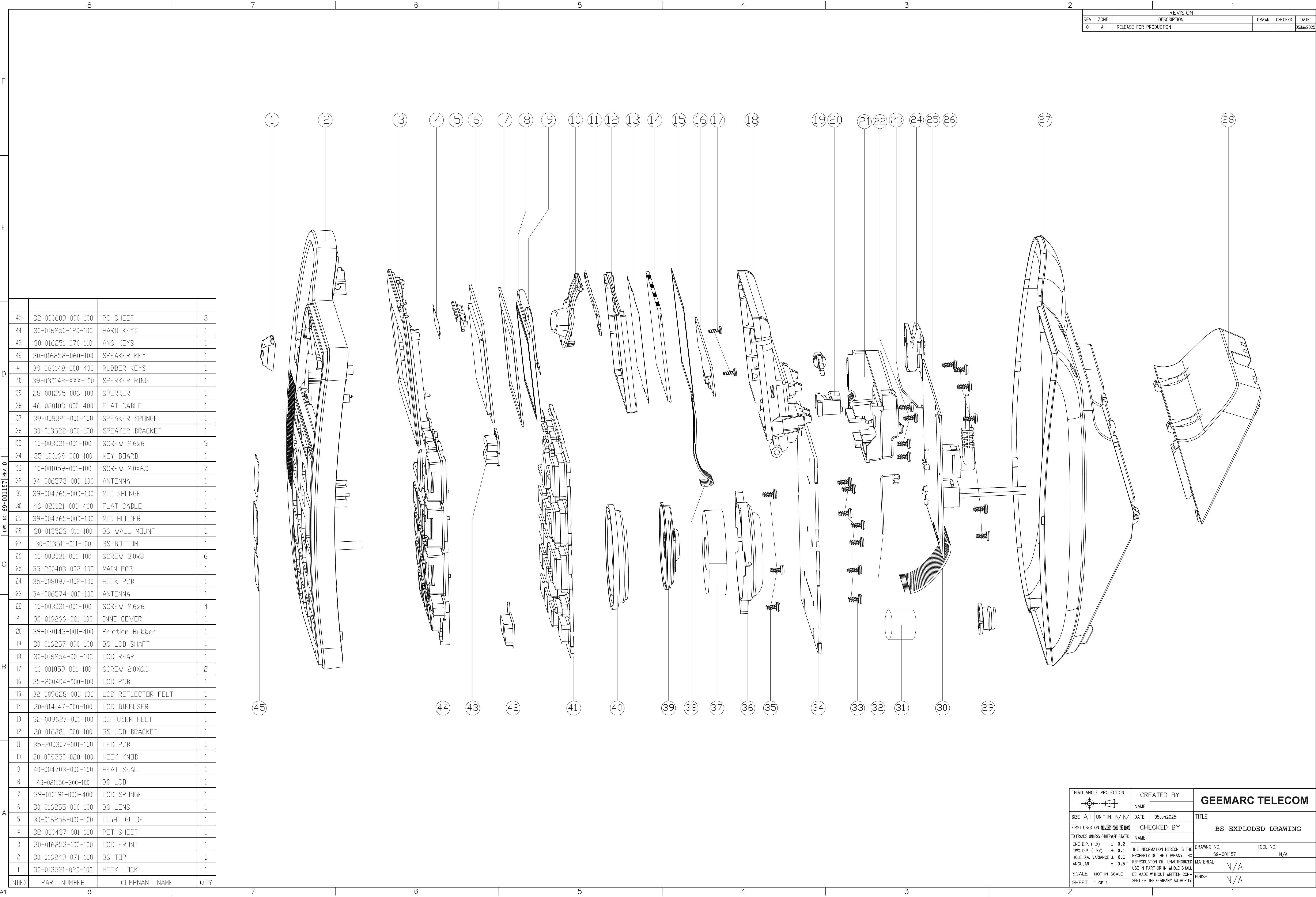
STEP 4:
DISPART BASE PAGE KEY PCB AND BS MAIN
PCB WITH SCREW DRIVER



STEP 4:
DISPART BASE KEYBOARD PCB AND ANTENNA
PCB WITH SCREW DRIVER

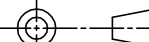


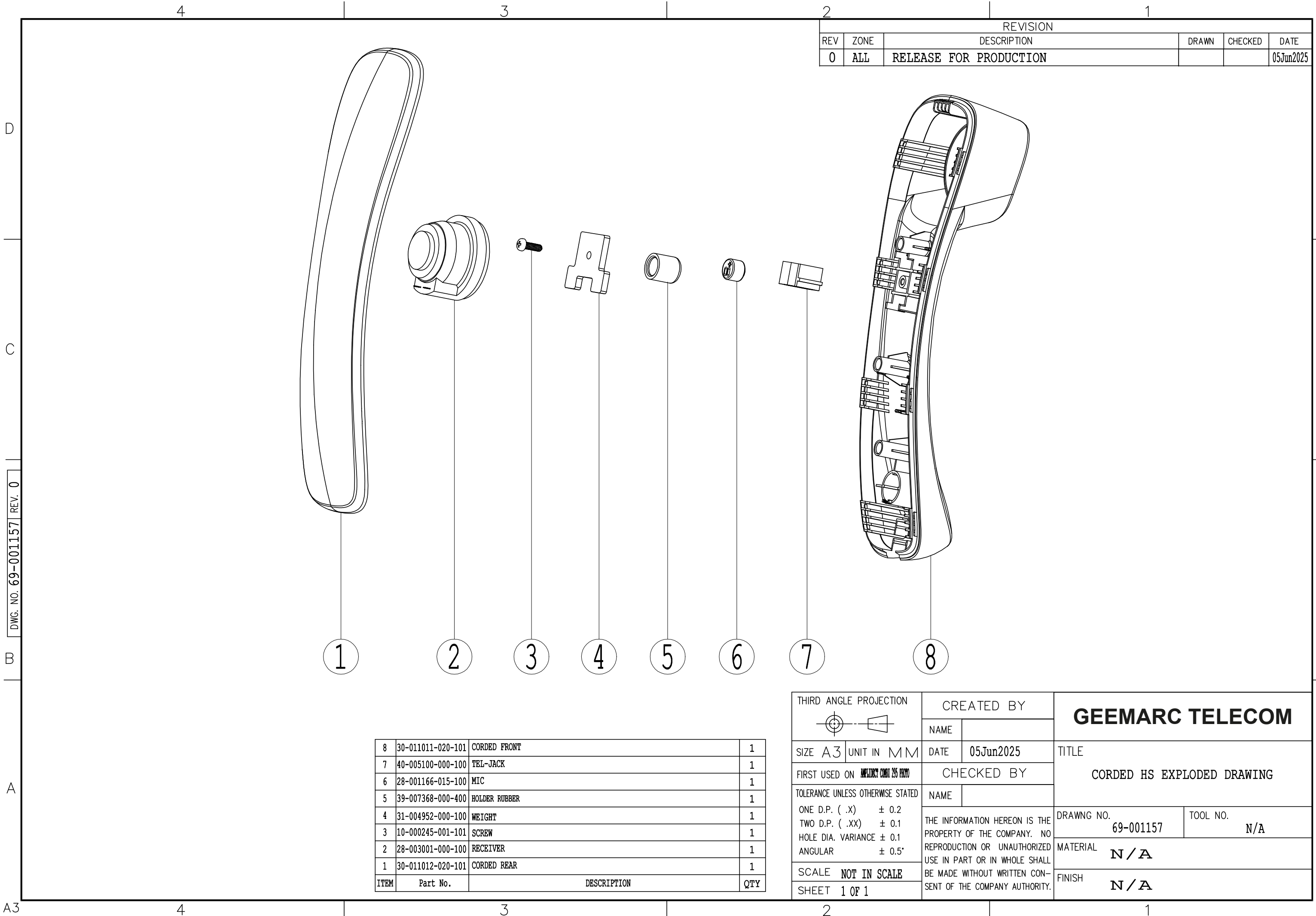
STEP 6:
DISPART CHARGER CONTACT ASSEMBLY PART
WITH SCREW DRIVER AND REPLACE NEW CHARGER
SPRING



INDEX	PART NUMBER	COMPNANT NAME	QTY
45	32-000609-000-100	PC SHEET	3
44	30-016250-120-100	HARD KEYS	1
43	30-016251-070-110	ANS KEYS	1
42	30-016252-060-100	SPEAKER KEY	1
41	39-060148-000-400	RUBBER KEYS	1
40	39-030142-XXX-100	SPERKER RING	1
39	28-001295-006-100	SPERKER	1
38	46-020103-000-400	FLAT CABLE	1
37	39-008321-000-100	SPEAKER SPONGE	1
36	30-013522-000-100	SPEAKER BRACKET	1
35	10-003031-001-100	SCREW 2.6x6	3
34	35-100169-000-100	KEY BOARD	1
33	10-001059-001-100	SCREW 2.0X6.0	7
32	34-006573-000-100	ANTENNA	1
31	39-004765-000-100	MIC SPONGE	1
30	46-020121-000-400	FLAT CABLE	1
29	39-004765-000-100	MIC HOLDER	1
28	30-013523-011-100	BS WALL MOUNT	1
27	30-013511-011-100	BS BOTTM	1
26	10-003031-001-100	SCREW 3.0x8	6
25	35-200403-002-100	MAIN PCB	1
24	35-008097-002-100	HODK PCB	1
23	34-006574-000-100	ANTENNA	1
22	10-003031-001-100	SCREW 2.6x6	4
21	30-016266-001-100	INNE COVER	1
20	39-030143-001-400	friction Rubber	1
19	30-016257-000-100	BS LCD SHAFT	1
18	30-016254-001-100	LCD REAR	1
17	10-001059-001-100	SCREW 2.0X6.0	2
16	35-200404-000-100	LCD PCB	1
15	32-009628-000-100	LCD REFLECTOR FELT	1
14	30-014147-000-100	LCD DIFFUSER	1
13	32-009627-001-100	DIFFUSER FELT	1
12	30-016281-000-100	BS LCD BRACKET	1
11	35-200307-001-100	LED PCB	1
10	30-009550-020-100	HODK KNOB	1
9	40-004703-000-100	HEAT SEAL	1
8	43-021150-300-100	BS LCD	1
7	39-010191-000-400	LCD SPONGE	1
6	30-016255-000-100	BS LENS	1
5	30-016256-000-100	LIGHT GUIDE	1
4	32-000437-001-100	PET SHEET	1
3	30-016253-100-100	LCD FRONT	1
2	30-016249-071-100	BS TOP	1
1	30-013521-020-100	HODK LOCK	1

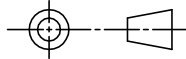
REV		ZONE		DESCRIPTION		DRAWN		CHECKED		DATE	
0		All		RELEASE FOR PRODUCTION						05Jun2025	

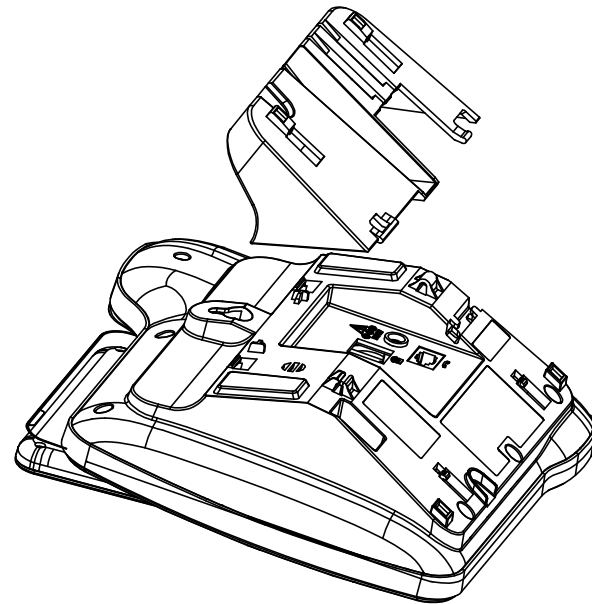
THIRD ANGLE PROJECTION		CREATED BY		GEEMARC TELECOM	
		NAME			
SIZE A1 UNIT IN MM		DATE 05Jun2025		TITLE	
FIRST USED ON EXCLUDED PER ISO		CHECKED BY		BS ISO PLOTTED DRAWING	
TOLERANCE UNLESS OTHERWISE STATED		NAME		DRAWING NO. 69-001157 TOOL NO. N/A	
ONE D.P. (.X) ± 0.2		THE INFORMATION HEREON IS THE PROPERTY OF THE COMPANY. NO REPRODUCTION OR UNAUTHORIZED USE IN PART OR IN WHOLE SHALL BE MADE WITHOUT WRITTEN CONSENT OF THE COMPANY AUTHORITY.			
TWO D.P. (.XX) ± 0.1					
HOLE DIA. VARIANCE ± 0.1					
ANGULAR ± 0.5°					
SCALE NOT IN SCALE		MATERIAL N/A		FINISH N/A	
SHEET 1 OF 1					



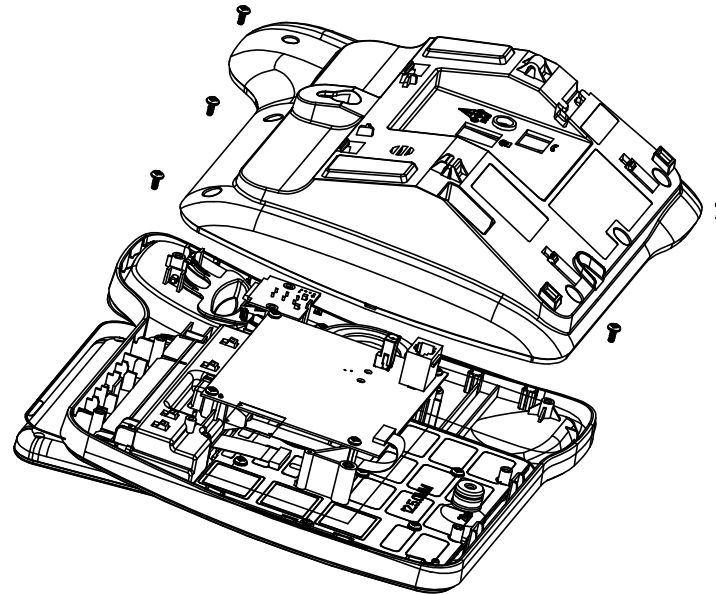
REVISION					
REV	ZONE	DESCRIPTION			DATE
0	ALL	RELEASE FOR PRODUCTION			05Jun2025

8	30-011011-020-101	CORDED FRONT	1
7	40-005100-000-100	TEL-JACK	1
6	28-001166-015-100	MIC	1
5	39-007368-000-400	HOLDER RUBBER	1
4	31-004952-000-100	WEIGHT	1
3	10-000245-001-101	SCREW	1
2	28-003001-000-100	RECEIVER	1
1	30-011012-020-101	CORDED REAR	1
ITEM	Part No.	DESCRIPTION	QTY

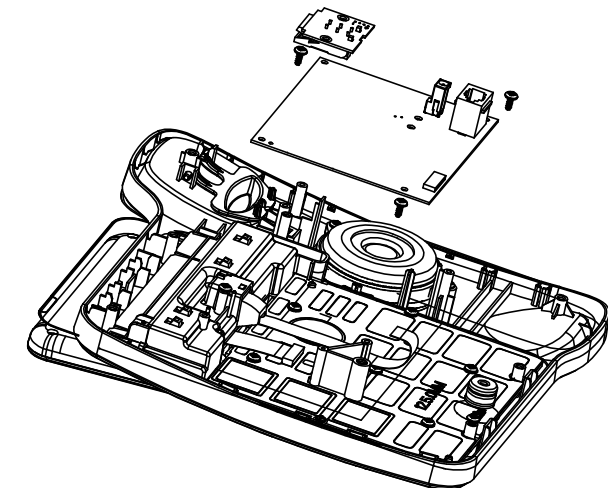
<div>THIRD ANGLE PROJECTION</div> <div></div>		CREATED BY		<div>GEEMARC TELECOM</div>			
		NAME					
SIZE	A3	UNIT IN	MM			DATE	05Jun2025
FIRST USED ON		AMPLITUDE COMB 255 PHOTO				CHECKED BY	
TOLERANCE UNLESS OTHERWISE STATED		NAME				<div>CORDED HS EXPLODED DRAWING</div>	
ONE D.P. (.X) ± 0.2		<div>THE INFORMATION HEREON IS THE PROPERTY OF THE COMPANY. NO REPRODUCTION OR UNAUTHORIZED USE IN PART OR IN WHOLE SHALL BE MADE WITHOUT WRITTEN CONSENT OF THE COMPANY AUTHORITY.</div>					
TWO D.P. (.XX) ± 0.1							
HOLE DIA. VARIANCE ± 0.1							
ANGULAR ± 0.5°							
SCALE		NOT IN SCALE		DRAWNG NO.	69-001157	TOOL NO.	N/A
SHEET		1 OF 1		MATERIAL		N / A	
				FINISH		N / A	



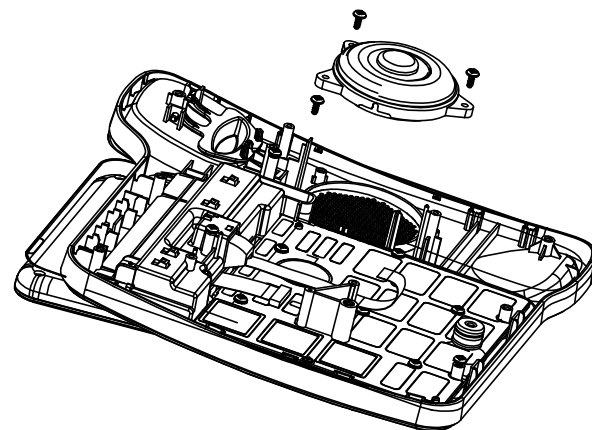
STEP 1:
DISPART THE WALLMOUNT



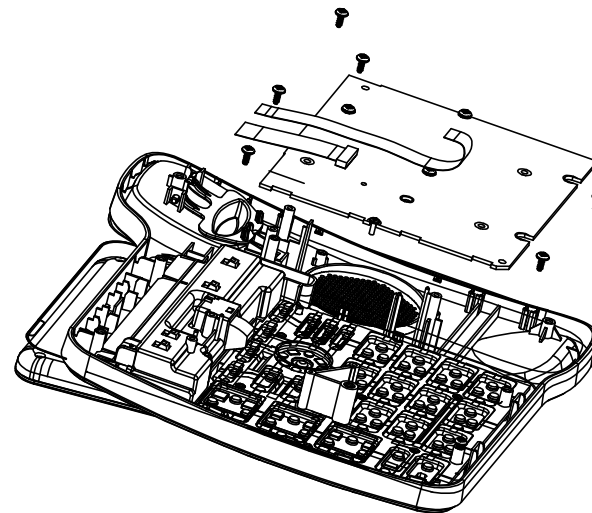
STEP 2:
OPEN BASE BOTTOM WITH
SCREW DRIVER



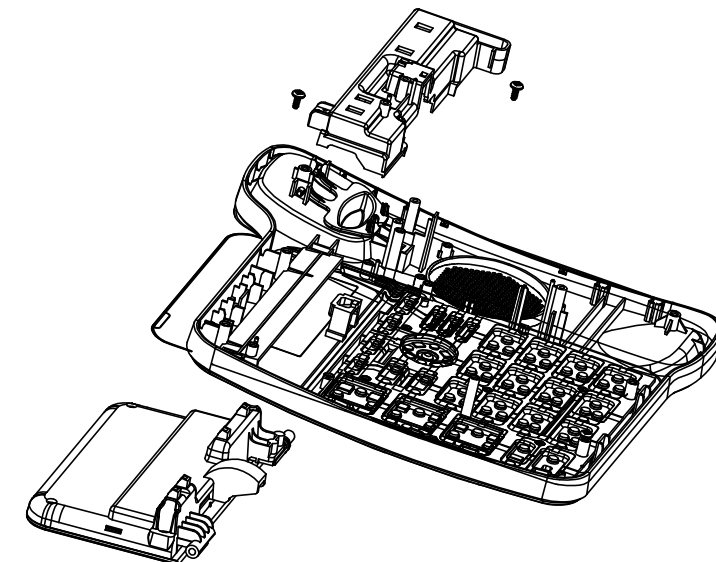
STEP 3:
DISPART THE BASE MAIN PCB
AND HOOK LOCK PCB WITH
SCREW DRIVER



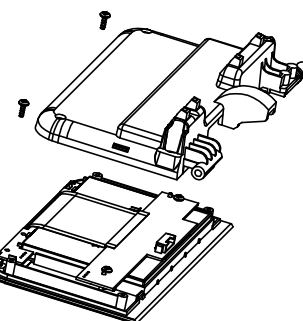
STEP 4:
REMOVE SPEAKER BRACKET WITH SCREW DRIVER AND
DESOLDER SPEAKER WIRE TO REPLACE NEW SPEAKER



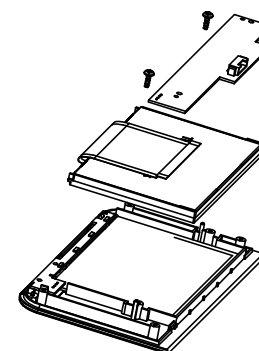
STEP 5:
DISPART BASE KEYBOARD PCB WITH SCREW DRIVER
AND DISPART CABLE




STEP 6:
DISPART INNER COVER WITH SCREW DRIVER AND
REMOVE LCD ASSEMBLY



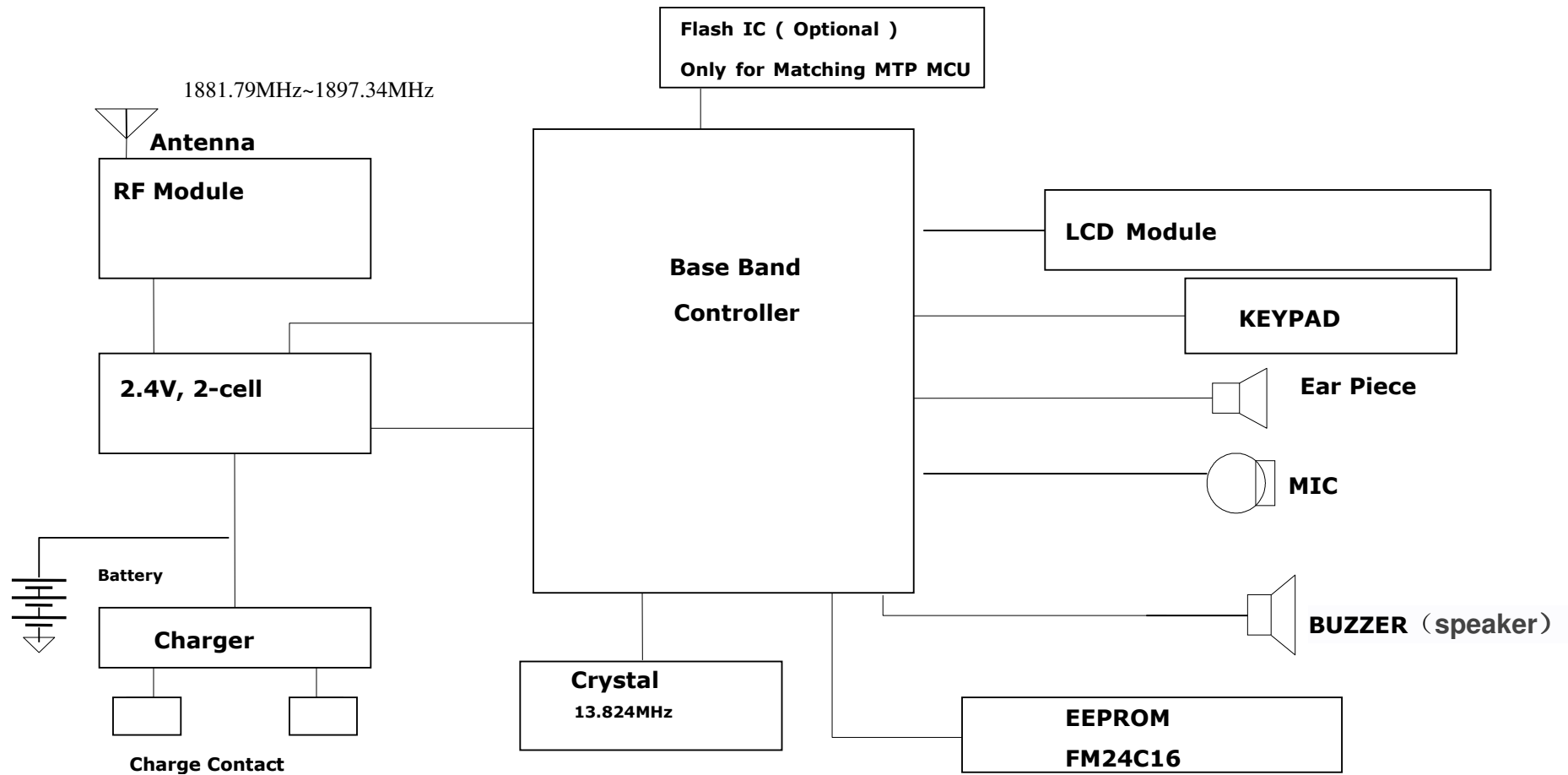
STEP 7:
OPEN THE LCD BOTTOM WITH SCREW DRIVER



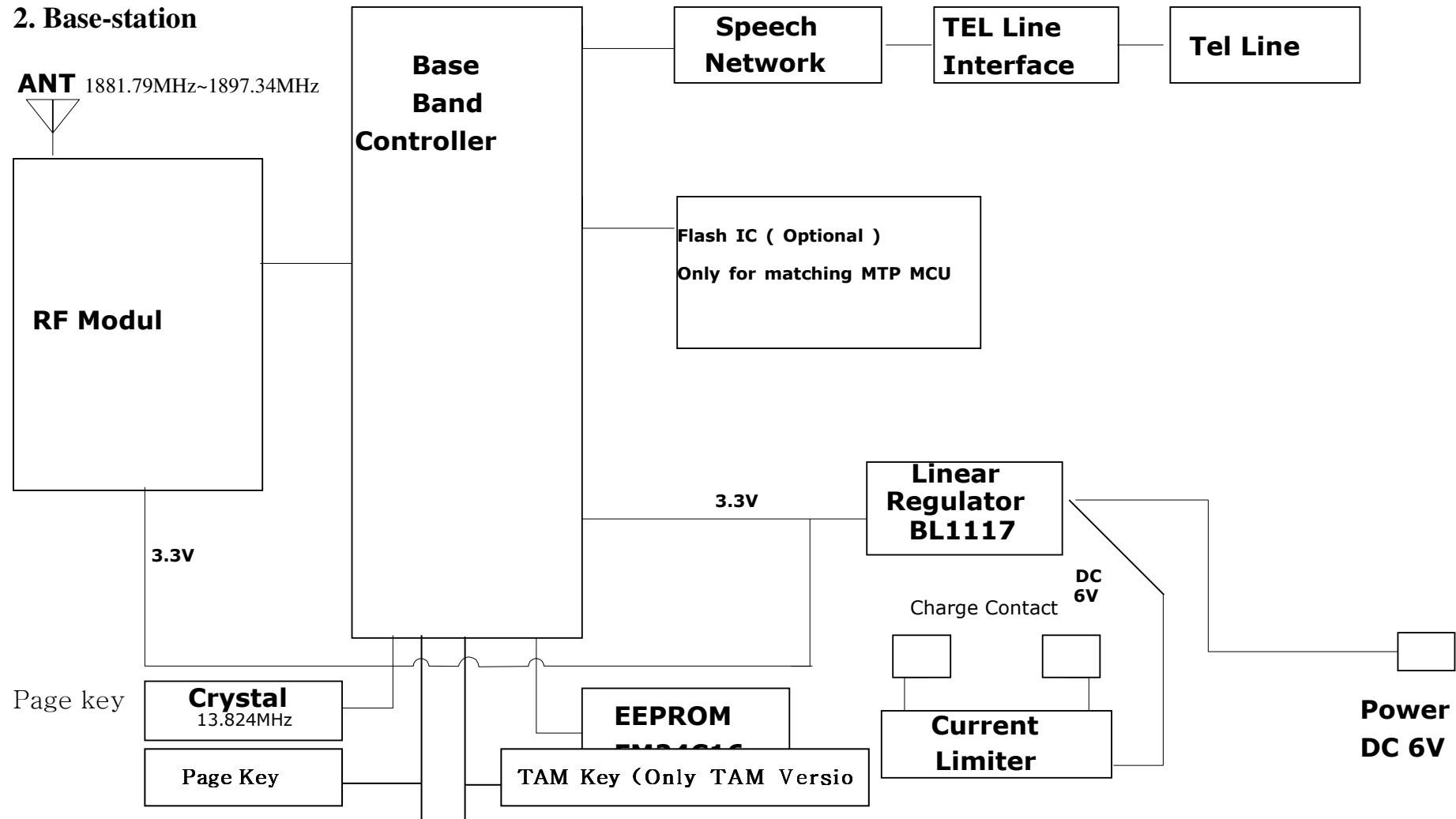
STEP 8:
DISPART LCD PCB WITH SCREW DRIVER AND
REPLACE NEW LCD

	Model name	Picture	Description	Part Number	Price
Handset & Charger	AMPLIDECT295		Microphone	28-001057-005-100	Please contact our helpline
			Receiver	28-001322-004-101	
			Speaker	28-002094-003-100	
			LCD glass(HS)	43-021149-300-100	
			Heatseal	40-004693-000-100	
			NiMH AAA x 2 Battery Pack	29-224050-210-1A0	
			Battery door	30-013562-012-100	
			Keypad	39-008424-180-100	
			DC Socket inside the charger	40-006983-000-100	
			Charger unit	85-000636-001-000	
			Power Supply Unit (EU)	26-460045-2EU-116	
			Power Supply Unit (UK)	26-460045-2UK-112	
	PHOTODECT295		Microphone	28-001057-025-100	Please contact our helpline
			Receiver	28-001322-004-101	
			Speaker	28-001189-019-102	
			NiMH AAA x 2 Battery Pack	29-224050-210-1A0	
			Battery door	30-015571-000-100	
			Keypad	39-080023-040-100	
			Charger unit	85-000637-002-000	
			DC Socket inside the charger	40-006983-000-100	
			Power Supply Unit (EU)	26-460045-2EU-116	
			Power Supply Unit (UK)	26-460045-2UK-112	
Base	AMPLIDECT295		Speaker	28-001295-006-100	Please contact our helpline
			Key Pad	39-008426-001-400	
			Page Key rubber mat	39-008427-000-400	
			DC Socket	40-006985-000-100	
			Power Adapter (EU)	26-460045-4EU-129	
	AMPLIDECT295 PHOTO		Microphone	28-001057-039-100	Please contact our helpline
			Speaker	28-001295-006-100	
			DC jack	40-006985-000-100	
			Keypad set	39-080164-002-100	
			Page Key rubber mat	39-008427-000-400	
			Power Adapter (EU)	26-460045-4EU-129	
	AMPLIDECT COMBI 295		Microphone	28-001166-020-100	Please contact our helpline
			Microphone for the corded handset	28-001166-015-100	
			Receiver for the corded handset	28-003001-000-100	
			Speaker	28-001295-006-100	
			LCD glass	43-021150-300-100	
			Heatseal	40-004703-000-100	
			DC Socket	40-006984-000-100	
			Keypad	39-060148-000-400	
			Power Supply Unit (EU)	26-460045-4EU-129	
			Power Supply Unit (UK)	26-460045-4UK-116	

1. Handset



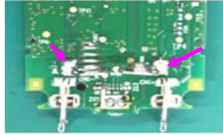


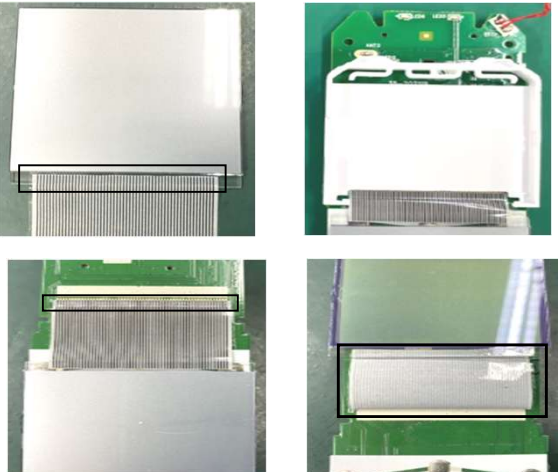
2. Base-station



Reference to Model as below

DECT295_WH	80-0635-01-00
DECT295-2_WH	80-0635-02-00
DECT295HS_WH	80-0635-04-00
DECT295_COMBI_WH	80-0636-00-00
DECT295-2_COMBI_WH	80-0636-04-00
PHOTODECT295_WH	80-0637-00-00
DECT295PHOTO_WH	80-1132-00-00
DECT295_CFOTO_WH	80-1157-00-00
PACK_MOBILITY_295	80-2376-00-00
Liberty 200	80-3413-00-00
Liberty 200 duo	80-3413-01-00

Instruction for Repairing

Operation	Procedure	Tools	Picture for reference
Replacing the battery contacts (for AD595 and Liberty)	<ol style="list-style-type: none"> 1. Place the PCB board on a workbench securely. 2. Remove the existing contacts from the PCB with a Soldering Iron. 3. Insert the springs into the PCB holes, weld the position with arrows. 4. Once the welding is complete, inspect the solder joints. If they are not satisfactory, remove and rework them. 	Anti-static strap (ESD wrist strap) Soldering Iron (Lead-free Soldering Tip) 390°C ± 20°C (Temperature setting range for soldering)	
Replacing the receiver	<ol style="list-style-type: none"> 1. Place the PCB board on a workbench securely. 2. Remove the existing receiver from the PCB with a Soldering Iron. 3. Position the receiver and route the flexible wires to the PAD location. 4. Use the soldering iron to solder the receiver's PAD connections onto the PCB board. 5. Once the welding is complete, inspect the solder joints. If they are not satisfactory, remove and rework them. 	Anti-static strap (ESD wrist strap) Soldering Iron (Lead-free Soldering Tip) 340°C ± 20°C (Temperature setting range for soldering)	
Replacing the speaker	<ol style="list-style-type: none"> 1. Place the PCB board and the rear handset cabinet on a workbench securely. 2. Remove the existing speaker bracket with a tweezers to press the two legs of the speaker bracket and remove from the slot on the bottom cabinet 3. Remove the speaker wires from the PCB by using a soldering iron 4. Install a new speaker onto the bottom cabinet. Take one end of the speaker bracket and hook it into the slot. Use tweezers to press the two legs of the speaker bracket into the slot on the bottom cabinet, securing the speaker onto it. 5. Solder the wirings into the PCB by welding solder to the SPK PAD. 6. Once the welding is complete, inspect the solder joints. If they are not satisfactory, remove and rework them. 	Anti-static strap (ESD wrist strap) Soldering Iron (Lead-free Soldering Tip) 340°C ± 20°C (Temperature setting range for soldering)	
Replacing the LCD module	<ol style="list-style-type: none"> 1. Place the PCB board and the rear handset cabinet on a workbench securely. 2. Remove the existing LCD from the PCB carefully, then take out the LCD bracket. 3. Remove the stain by rubbing with Alcoholic solvent. 4. Clean the new LCD with a dust-free cloth, then place it into the hot punching machine. Fold the zebra strip, remove the back paper, and position the zebra strip at the edge of the PCB, aligning it properly with the metal pads. 5. Take the high-temperature adhesive tape and cover the zebra strip. Punch the LCD with the hot-pressing machine. 6. Remove the high-temperature adhesive tape. 7. Test with the LCD function. If they are not satisfactory, remove and rework again. 	Anti-static strap (ESD wrist strap) Dust-free cloth / Alcohol bottle White cloth clamping Solvent : Commerical available contact cleaner Hot Pressing machine	

1 Tools/Materials

All tools are available from electronics retailers.

Anti-static wristband



Antistatic Workplace Mat



Tweezers, ESD protected



Opening tool



Soldering station with adjustable temperature range, different soldering tips and lead-free solder.



Torx Screwdriver T5



Kapton Tape



Silicone Tape

Needed for a display repair and supplied with the corresponding spare part.

