

# INSTRUCTION MANUAL **En**



!!!Please refer to our website: [www.geemarc.com](http://www.geemarc.com) for an up to date user guide, as there may be important updates and changes you need to be aware of !!!

## Cautions:

### Precautions and maintenance

- For indoor use only
- To avoid risk of fire or electric shock, do not expose the unit to moisture or condensation.
- To avoid overheating, do not block the ventilation holes on the back of the Clock Display.
- Keep the Clock Display out of direct sunlight.
- Do not dismantle the Clock Display. There is a risk of electric shock and there are no user-serviceable parts inside. Dismantling the Clock Display will void your warranty.

### Cleaning the LCD Screen

- Treat the screen carefully. The screen of the Clock Display is made of glass and can easily be broken or scratched.
- If fingerprints or dust accumulate on the LCD screen, we recommend using a soft, non-abrasive cloth such as a camera lens cloth to clean the LCD screen.
- Moisten the cleaning cloth with a cleaning solution and apply the cloth to the screen.

## Introduction:

Thank you for the purchase of the Clock Display. It is designed to allow you to see the time quickly and easily. Please read this User Manual carefully to learn the correct way to use the Clock Display.

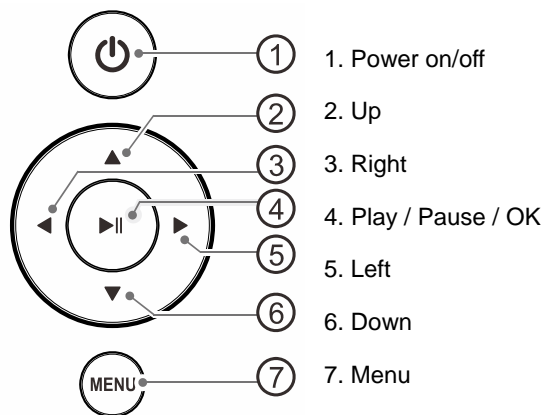
**Features:** Days Clock

### Packaging Check List:


- 9 inch Clock Display
- User manual
- Bracket
- AC adapter

## 1. Product Diagram


### 1.1 Back side Buttons



### 1.2 Left side of the Clock Display

DC in “” on the left side of the Clock Display.  
5V --- 1.5A

## 2. Getting Started

1. Place the Clock Display with installing bracket in a steady flat position. Then plug one end of the AC adapter into a standard 100-240V AC electrical outlet and the other end into the DC IN slot on the left side of the Clock Display.
2. Remove the protective film covering the Screen.
3. Hold and Press the power button  on the backboard to turn On / Off the Viso30.

## 3. Operating Instruction

When you power the unit on for the first time it will show the startup logo. Then the main menu will display after a few seconds. After this the Days Clock will display.

You can easily see the details week day, time, month and year on the Clock Display screen, and they will change automatically.

## 4. Setting

Press **Menu** key and select the **Setting** icon in the main menu. Press “▶▶” Button to enter the **Setting** interface and press ▲ or ▼ to highlight your selection. Press “▶▶” Button to enter the setting value. Then press ◀ or ▶ to set the value.

You can select Style Setup, Set Days-Clock, Calendar Setup, System Setup, and so on.

### 4.1. System Setup

#### Language

Changes the operating language of the photo Clock Display. Available Values: English, Nederland, Français, Deutsch, Italiano, Espanol, Hebrew. Use the buttons ◀ or ▶ to select the language.

#### Grayscale

Press ◀ and ▶ buttons to select the Gray Scale level that you require between 1 to 10.


#### Brightness

Press ◀ and ▶ buttons to select the Brightness level that you require between 1 to 10.

#### Contrast

Press ◀ and ▶ buttons to select the Contrast level that you require between 1 to 10.

#### Auto power on & off function Remarks:

1. In order to activate the auto power ON & OFF function, please check the settings for the **Auto Shut Time**, **Sleep timer**, **Auto boot Time** and **Regular Boot** are set correctly. If set to **OFF**, the function is not activated.
2. A reminder for the Auto OFF appears 1 Minute before the frame switches off. Press any key to cancel the Power OFF function.
3. If Power OFF is activated and the frame switches off at the selected time, the frame goes into Sleep-mode. To switch the frame on again, you need to press the “Power”  Button on the Remote or the rear side of the frame twice.

#### Auto Shut Off Time

Set the auto power off time in the format of “[Hour]:[Minute]”. In **System setup / Auto shut time**. Press ▶▶ button to select. Use the ◀ and ▶ buttons to switch between fields. Press ▲ or ▼ buttons to change time field values. Press ▶▶ button to validate. Keep the Sleep Timer on. Press Menu button to exit.

#### Auto Power On Time

Set the auto power on time in the format of “[Hour]:[Minute]” in **System setup/Auto Boot time**. Press ▶▶ button to select. Use the ◀ or ▶ buttons to switch between fields. Press ▲ or ▼ buttons to change time field values. Press ▶▶ button to validate. Keep the Regular Boot on. Press Menu button to exit.

#### Power Frequency:

You can choose to set the function auto power ON/OFF as follows:  
- Workday, Week end, Once, Every day. Use the ◀ or ▶ buttons to change mode field values.

#### Firmware Version:

You can check the software version of your Viso 30.

#### Reset Default settings:

Use this function to set your Viso 30 with the factory parameters. Choose Reset default setting and press ► button to enter. Use the ◀ or ▶ buttons to select Yes and press ► button to validate.

### 4.2. Calendar Setup

#### Adjust Date

Set the current date in the format of "[Year]: [Month]: [Day]". Short press the ◀ or ▶ to enter in the submenu. Short press ◀ or ▶ buttons to switch between fields. Press ▲ or ▼ to change Date field values and press ► button to validate.

#### Adjust Time

Set the current time in the format of "[Hour]:[Minute]". Short press the ◀ and ▶ to enter in the submenu. Short press the ◀ or ▶ buttons to switch between fields. Press ▲ and ▼ to change Time field values and press ► button to validate.

#### Time Format

Change to display the time in either 12-hour or 24-hour time format. Press ◀ and ▶ buttons to change time format values.

### 4.3 Set Days Clock

Press Menu button and select **Setting** in the main menu. Press ► button to enter the **Setting** interface. Press ▲ or ▼ to choose Set days clock, and press ► to validate. Press ▲ or ▼ to highlight your selection (Morning, Afternoon, Evening, Night to setting). Press ► button to enter the sub-menu items. Use the ◀ or ▶ buttons to switch between fields. Press ▲ or ▼ buttons to set the correct hour or minute, after that, press ► to save. Follow this method for the setting you require.

### 4.4 Style Setup

Select Setting in the main menu. Press ► button to enter the Setting interface and short press ▲ or ▼ to your selection (Style1, style2 and style3 to select). Short press ► Button to complete. Press Menu button to exit.

**Style 1:** Day of the week, hour and date

**Style 2:** Day of the week, time of day, hour and minute

**Style 3:** The screen displays "Now it's" (day of the week and time of day)

## 5. Troubleshooting Guide

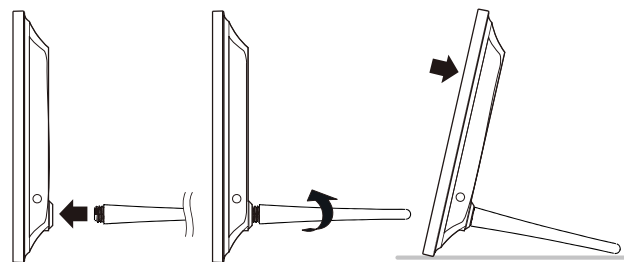
If you are having problems with your Viso 30 clock or for further assistance, please contact the Technical Support.

- **No power:** Please check whether the AC-Adaptor is inserted correctly.

- **Display too bright or too dark:** Please adjust the brightness or contrast in the setup menu.

- **The colour is light or no color:** Please adjust the color and contrast setup.

## 6. Stand Instruction



The bracket is connected to the back cover of the product. Please open the bracket before you place it steadily on a flat surface, push the bracket to the slot before you pick it up. Please refer to the illustration above.

## 7. Technical Specifications

- **Adapter:** Input AC 100-240V 50/60HZ Output DC 5V/1.5A
- **Screen Parameter:**

Screen Size:	9 inch TFT
Resolution:	800*480 Pixels
Contrast:	400-500:1
Aspect Ratio:	16:9
Brightness:	300-400cd/ m <sup>2</sup>
Response Time:	20ms
Viewing Angle:	60°(left/right/vertical), 40°(horizontal)
Working Temperature:	0 °C ~ 40 °C
Humidity:	10-85%

## GUARANTEE

From the moment your Geemarc product is purchased, Geemarc guarantee it for the period of two years. During this time, all repairs or replacements (at our discretion) are free of charge. Should you experience a problem then contact our help line or visit our website at [www.geemarc.com](http://www.geemarc.com).

The guarantee does not cover accidents, negligence or breakages to any parts. The product must not be tampered with or taken apart by anyone who is not an authorized Geemarc representative.

The Geemarc guarantee in no way limits your legal rights.

**IMPORTANT:** YOUR RECEIPT IS PART OF YOUR GUARANTEE AND MUST BE RETAINED AND PRODUCED IN THE EVENT OF A WARRANTY CLAIM.

**Please note: The guarantee applies to the United Kingdom only.**

## DECLARATIONS:

### CE Directives

Geemarc Telecom SA hereby declares that this product is in compliance with the essential CE Directive requirements..

The CE declaration of conformity may be consulted at [www.geemarc.com](http://www.geemarc.com)

**Electrical connection:** The apparatus is designed to operate from a 230V 50Hz supply only. (Classified as hazardous voltage according to EN60950 standard). The apparatus does not incorporate an integral power on/off switch. To switch off the apparatus, disconnect the power adaptor. When installing the apparatus, ensure that the mains power socket is readily accessible.

### Recycling Directives

The WEEE (Waste Electrical and Electronic Equipment) has been put in place for the products at the end of their useful life are recycled in the best way.

When this product is finished with, please do not put it in your domestic waste bin. Please use one of the following disposal options:

- Remove the batteries and deposit them in an appropriate WEEE skip.

Deposit the product in an appropriate WEEE skip.

- Or, hand the old product to the retailer. If you purchase a new one, they should accept it.

Thus if you respect these instructions you ensure human health and environmental protection.



For product support and help visit our website at

[www.geemarc.com](http://www.geemarc.com)

telephone **01707 387602**

or fax **01707 832529**



QUGViso30\_En\_A4\_V1.1