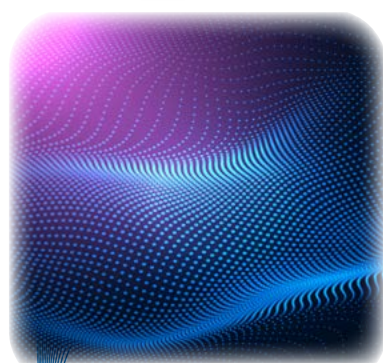
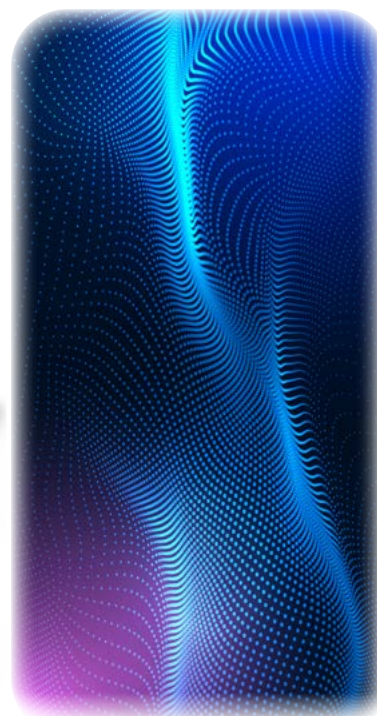


We make your daily  
**life easier**

REVISION N°1



PRODUCT  
CATALOGUE | **2026**

# GEEMARC TELECOM

## About

Join us on our  
social media networks!

#GeemarcTelecomSA



Geemarc was **founded** in **1974**. In 1984, we were **one of the first** to obtain a licence to import **cordless telephones** for the British market.

Today, Geemarc Telecom **specialises**, as a **manufacturer**, in the sale of **products specifically** suited to the needs of **hearing-impaired, visually-impaired, senior citizens** and people living with **dementia**. Products range from corded, cordless, mobile phones, TV and/or hearing-aid headsets, **clocks**, alarm clocks and **accessories**.

We also supply the **accessibility** market for establishments open to the public (retail, public authorities, public transport, car services, etc), with numerous products including **induction loop**, guide posts, **alerters** and floor-mounted guides, etc.

Our products are also **recommended** by many **specialists**.

Geemarc Telecom is constantly **innovating** to make your **daily life easier** !



Watch the video presentation

# Contents

## 4 Amplified telephones

Go to >

Dect595 range - Compatibility.....	4	
Dect595 range.....	5	
Dect295 range - Compatibility.....	6	
Liberty 200.....	7	NEW
Dect295 range.....	7	
Dect295 range - COMBI.....	8	
Corded phones.....	10	
4G corded phones.....	11	NEW
Phones accessories.....	11	
Mobiles and accessories.....	12	

NEW 14	.....SONARYA - Speaker
17	.....TV headsets
NEW 18	.....CL7370 range + USB headset

## 14 Speaker Headsets

Go to >

## 20 Alarm clocks Clocks

Go to >

Wake'n'Shake range.....	20	
Sonic Alert range.....	21	
VISO range.....	22	NEW

24	.....Amplicall range - Compatibility
25	.....Amplicall range
27	.....Examples of pairings
28	.....Other accessories

## 24 Accessories

Go to >

## 29 Accessibility

Go to >

Accessibility.....	29	NEW
--------------------	----	-----



Hearing Aid Compatible in T position



2.4 GHz frequency



Click on the play button to watch the video



4G Network





## AMPLIDECT595

## AMPLIDECT595 accessories



**AMPLIDECT595 U.L.E.  
DOORBELL**



**AMPLIDECT595 U.L.E.**



**AMPLIDECT595 U.L.E.  
TWIN**



**AMPLIDECT595  
PHOTO TWIN**



**AMPLIDECT595  
SOS-PRO**



**AMPLIDECT595  
PHOTO**



**AMPLIDECT  
COMBI 595**



**CL595**



**DOORBELL  
595 U.L.E.**



**RINGER 595  
U.L.E.**



**AMPLIDECT595  
U.L.E AD**



**SOS-PRO  
595**

Only  
compatible  
with the  
DECT595  
U.L.E range

Compatible  
with the  
entire  
DECT595  
range

## AMPLIDECT595 U.L.E DOORBELL



- DOORBELL 595 U.L.E + RINGER 595 U.L.E + AMPLIDECT595 U.L.E
- Use the handset as an intercom to speak with the person at your door
- The ringer rings and flashes when someone rings at your door or when you receive a phone call
- Possibility to forward the communication to a mobile phone

## AMPLIDECT595 SOS-PRO



\*Multiple DECT SOS  
pendants can be  
added with this model



- Similar to the AMPLIDECT595 U.L.E + 1 DECT SOS pendant\*
- 2 SOS buttons to make emergency calls/send alarms to your family (dials 4 stored numbers and sends out personalised or existing message)

## AMPLIDECT595 PHOTO



**TWIN VERSION  
AVAILABLE**



- Receiving volume up to **50dB**
- 10 one-touch memory buttons on the base
- Emergency call function (SOS button)
- 50 phonebook memories
- Built-in answering machine

## AMPLIDECT595 U.L.E



**TWIN VERSION  
AVAILABLE**



- Receiving volume up to **50dB**
- Vocal guidance
- Emergency call function (SOS button)
- 9 one-touch memory on the handset
- Built-in answering machine
- Speaker phone on handset and base

## SOS-PRO 595

Up to 3 SOS pendants  
can be paired with the  
AMPLIDECT595 SOS-PRO



- Additional SOS pendant compatible with all the AMPLIDECT595 range models:
- SOS/button to answer incoming calls
- 2 one-touch memory buttons
- Waterproof

## AMPLIDECT COMBI 595



- Receiving volume up to **50dB**
- Adjustable ringer volume up to **80dB**
- 4 one-touch memories - 3 of them with pictures and 9 one-touch memories on the handset
- SOS button on the handset and base

## AVAILABLE AS OPTIONS



### DOORBELL 595 U.L.E

- Wireless doorbell
- Send a signal to the ringer / telephone
- Built in intercom which allows communication with the AMPLIDECT595 ULE handset



### RINGER 595 U.L.E

- Powerful sound alerter (**100dB**)
- Flashing light
- Three different operating modes
- Adjustable tone and ringtone volume
- Back up battery



### AMPLIDECT595 U.L.E AD

Additional handset compatible  
with the entire DECT595 range

## AMPLIDECT295

## AMPLIDECT295 additional



AMPLIDECT295 TWIN



AMPLIDECT295  
PHOTO



PACK MOBILITY



PACK SENIOR



AMPLIDECT  
COMBI 295



AMPLIDECT  
COMBI 295-2



AMPLIDECT  
COMBI-PHOTO 295



AMPLIDECT295  
AD



PHOTODECT295

Compatible  
with the  
entire  
DECT295  
range

## LIBERTY 200



Watch the video  
presentation



- Amplified cordless phone and its separate DECT base: place the handset anywhere in your house
- Receiving volume up to **30dB**
- Call blocking: VIP memories list, blacklist, functions to automatically allow/block certain incoming calls
- Speaker phone

## LIBERTY 200 TWIN



Watch the video  
presentation



Same as LIBERTY200  
+ **1 additional handset**

## LIBERTY 200 TRIPLE



Watch the video  
presentation



Same as LIBERTY200  
+ **2 additional handsets**

## AMPLIDECT 295 TWIN



- Amplified cordless telephone with 1 additional handset
- Receiving volume up to **30dB**
- Speaker phone
- Built-in answering machine
- Visual ringer indicator (flashing light)
- Name display in idle mode and during call

## AMPLIDECT295 PHOTO



- Amplified cordless telephone
- Receiving volume up to **30dB**
- 10 large buttons (18 x 18 mm) can be used as picture buttons or as a number pad
- Built-in answering machine
- Visual ringer indicator (flashing light)

## Pack MOBILITY



Same as AMPLIDECT295  
+ **1 additional PHOTODECT295  
handset**



## EXCLUSIVE TO GEEMARC TELECOM!

If you use any of our photo telephones, you can customise the picture buttons using the custom template available from our website to print images or logos at the right size:

[www.geemarc.com](http://www.geemarc.com)

Go on the product page and select  
"Photo Template".



### AMPLIDECT COMBI 295



- Amplified corded and cordless telephone
- Receiving volume up to **30dB**
- Ring volume up to **80dB** on the base, **70dB** on the handset
- 4 one-touch memory buttons, 3 with pictures
- Built-in answering machine
- Large buttons with big characters

### AMPLIDECT COMBI 295-2



Same as AMPLIDECT COMBI 295  
+ **1 standard additional handset**

### AMPLIDECT COMBI PHOTO 295



Same as AMPLIDECT COMBI 295  
The additional handset is a **PHOTODECT295** handset with picture buttons

### Pack SENIOR



Same as AMPLIDECT COMBI 295  
+ **1 PHOTODECT295 additional handset**

## AVAILABLE AS OPTIONS ACROSS THE DECT295 RANGE



**PHOTODECT295**  
Additional handset

The handsets and base stations in this range are all compatible with each other, allowing you to combine them as you wish to meet your needs.

(SOS functions are not accessible from the additional handset when paired with the AMPLIDECT 295 SOS-PRO)



**AMPLIDECT295 AD**  
Additional handset

### EXAMPLES OF POSSIBLE PAIRINGS



Pairing 1



Pairing 2



Pairing 3



Pairing 4

### SERENITIES



- Receiving volume up to **30dB**
- Extra loud ringer up to **80dB** at 1 metre.
- 5 programmable emergency numbers
- Emergency-call remote control supplied (SOS bracelet)
- Voice guidance
- Large screen

### Pack SERENITIES



Same as SERENITIES  
+ **1 fall-detection remote control** instead of the standard SOS bracelet

### CL595



- Amplified phone, receiving volume up to **50dB**
- Voice guidance, caller ID
- Extra loud ringer
- Visual ringer indicator (flashing light)
- Concave buttons and tilting screen
- Built-in answering machine
- 4 one-touch buttons/emergency buttons

### CL610



- Adjustable receiving volume up to **40dB**
- Adjustable ringer volume up to **90dB** (3 levels)
- 3 one-touch photo memories
- SOS bracelet that allows you to pick up calls, activate the hands-free function and hang-up from distance
- Up to 30 programmable emergency numbers

### PhotoPHONE™110



- Adjustable receiving volume up to **30dB**
- Adjustable ringer volume up to **85dB** (3 levels)
- 8 Photo ID memory buttons
- Visual ringer indicator (flashing light)
- ON/OFF switch for Automatic Amplification



### AMPLIPOWER™40



Watch the video presentation



- Amplified phone, receiving volume up to **40dB**
- 12 one-touch memory buttons, including 3 emergency numbers
- Hands-free, visual ringer indicator (flashing light)
- Big button keypad

### AMPLIPOWER™50



Watch the video presentation



**Our loudest phone!**  
Similar to the AmpliPOWER™40 but with receiving volume adjustable up to **60dB**.



COMING SOON  
1ST QUARTER 2026

## | SERENITIES 100 V2T



Connect the SERENITIES 100 V2T to your tablet, smartphone or computer to have your conversations automatically transcribed:

from voice to text (for the hearing impaired) /  
from text to voice (for the mute).

- Receiving volume up to **40dB**
- Extra loud ringer up to **85dB** at 1 metre
- Extra bright visual ring indicator
- Emergency-call remote control supplied (SOS bracelet)
- SOS button with SOS procedure to automatically dial the numbers of up to 5 people + emergency voice message)
- 5 programmable emergency numbers
- Voice assistance (keys, menu, phonebook, telephone number)
- 3 direct photo memories (photo keys), 10 indirect memories
- Blacklist (up to 200 numbers) with 4 call blocking modes
- Ambient temperature alarm + input for external sensor

## | SERENITIES 100



Same as SERENITIES 100 V2T  
+ **1 SOS bracelet**

## | Pack SERENITIES 100



Same as SERENITIES 100 V2T  
+ **1 fall-detection remote control**

## | VBC4 : FALL-DETECTION REMOTE



- Ergonomic alarm bracelet with fall-detection and button
- Manual alarms: triggered by pressing the pushbutton
- Automatic alarms: when the remote detects a fall, the system triggers an alarm automatically
- Before sending automatic fall detection alarm to the home unit, the remote vibrates and the red LED blinks for a duration of 20 seconds.
- **Compatible products:** all the SERENITIES and SERENITIES 100.

## | SOS WALT REMOTE



- Emergency SOS button: auto dialling call procedure through 5 different numbers + voice message
- Press the SOS button to answer incoming calls and activate the hands-free function
- **Compatible products:** all the SERENITIES and SERENITIES 100.

## | SOS REMOTE FOR CL610 / CL9000



- 433 MHz water proof remote control: one key control with LED indicator
- Up to 30 programmable emergency numbers
- Customisable SOS voice announcement
- **Compatible products:** CL610, CL9000.

## | CL100



Watch the video  
presentation



- Amplified phone, receiving volume up to **30dB**
- 9 one-touch memory buttons
- 3 emergency memory buttons
- Big button telephone
- Tone control
- Visual ring indicator

## | CL1100



- Adjustable receiving volume up to **30dB**
- Adjustable extra loud ringer up to **80dB**
- 12 direct memories
- Time break

## | DALLAS20



- Adjustable receiving volume up to **25dB**
- Adjustable extra loud ringer up to **80dB**
- 3 one-touch memories with pictures
- Ringer volume up to **70dB** at 1 meter
- PC code : for Pabx (number programming to exit from the switchboard)

## | DALLAS10



- Receiving volume up to **15dB**
- 3 one-touch memory buttons
- 10 indirect memories
- Big button desk phone
- Extra bright visual ring indicator

## | CL9000



4G



- **4G emergency amplified corded phone with auto SOS bracelet and NANO SIM slot.**
- Auto dials up to 5 emergency numbers
- 3 one-touch photo memories fully customisable
- Receiving volume up to **40dB**
- Loud Ringer: up to **90dB** at 1 meter (approx. 3,3 feet)

## | CL2000

4G



NEW

- **Plug your landline phone into it and your phone will then operate over the 4G network.**
- Auto dials up to 5 emergency numbers
- 3 one-touch photo memories fully customisable
- Receiving volume up to **40dB**
- Loud Ringer: up to **90dB** at 1 meter (approx. 3,3 feet)

## | CLA4



- Direct vibe handset
- Placing the handset on your temple will allow sound vibrations to travel from the pulsator to the speech center of your brain via bone conduction.
- Compatible with AMPLIPOWER40/50

## | CL11



- Ring amplifier
- **95dB** alarm sound
- Volume control (high/low)
- Visual ring indicator



|CL8000



- 4G network amplified mobile phone with auto dialing photo memories and SOS button
- 4 one-touch photo memories fully customisable
- Receiving volume up to **40dB**
- Loud Ringer: up to 80dB at 1 meter (approx. 3.3 feet)
- **SOS button with geolocation system**
- 5 pre-programmable emergency numbers
- Possibility for the 5 people whose number has been pre-registered to receive the GPS coordinates of the phone by sending a text to said phone

CL8000

Convenient and practical.

|CL8700



- Receiving volume up to **35dB**
- 4G network
- Missed call/messages symbol display on the front
- 2 one touch memories + 1 I.C.E key + 1 SOS button with geolocation system
- 2MP camera, talking features and speaker function

|CL8600



- Receiving volume up to **35dB**
- 4G network
- 2 one touch memories + 1 I.C.E key + 1 SOS button with geolocation system
- 2MP camera, talking features and speaker function

|iLoop +



- Inductive neckloop
- Signal amplification up to **30dB**
- Built-in microphone
- Compatible with CL8360, CL8500 and any telephone with a 3.5 mm jack socket

|CL87X



- USB Type-C hands free kit for Geemarc mobile phones only : CL8000, CL8600, CL8700

|iBT10

\*Accessories included:



\*In option:  
iBT10 ML

- Stereo Bluetooth chipset
- Possibility to connect two other Bluetooth devices
- Two different listening option: with included ear-phones or with the neck loop for users of hearing aid with T position (**neckloop iBT10 ML in option**)
- Adjustable tone control
- USB Type C Charging Port
- \*Accessories included: earphones, Lanyard with clamp, Belt clip,
- \*iBT10 LOOP = iBT10 + iBT10 ML

|iBT10 LOOP



Same as iBT10  
+ 1 neckloop iBT10 ML

iBT10 LOOP

Neck loop  
for users of  
hearing aid  
with T position.



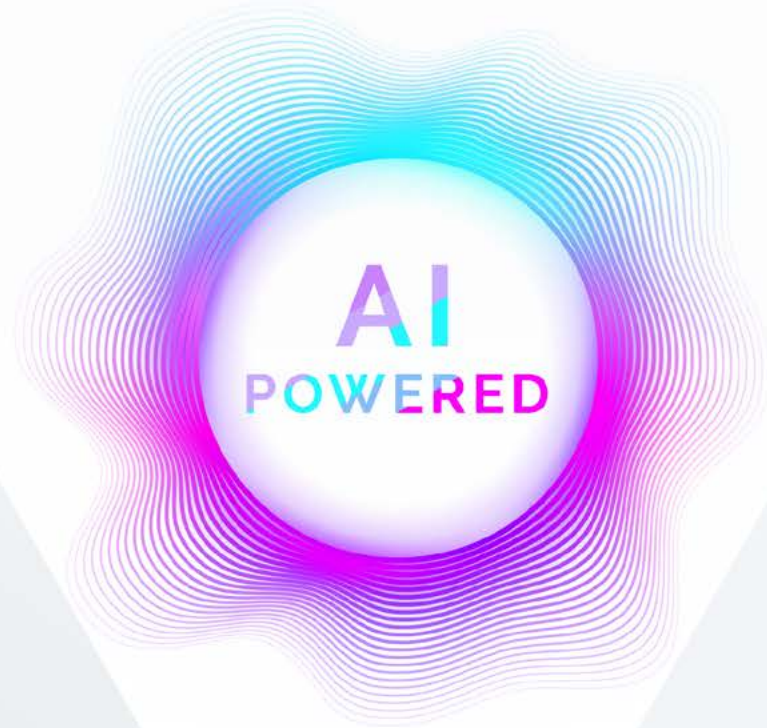
|CLHOOK hands-free kits

	Model 1	Model 3	Model 5	Model 9 v2
Feature	Geemarc	iPod/MP3	NA	For GSM
Golden jack	2.5mm	3.5mm stereo	2.5mm	3.5mm
Mic	Yes	NA	Yes	Yes
Mic Mute	Yes	NA	Yes	Yes
Left ear	Loop	Loop	Loop	Loop
Right ear	NA	Loop	Earphone	NA
Clip	Yes	Yes	Yes	Yes
Blister	Yes	Yes	Yes	Yes



# SONARYA

HIGH QUALITY AUDIO



SPEAKER POWER  
2 X 5 WATTS

## | SONARYA

NEW

Watch the video presentation

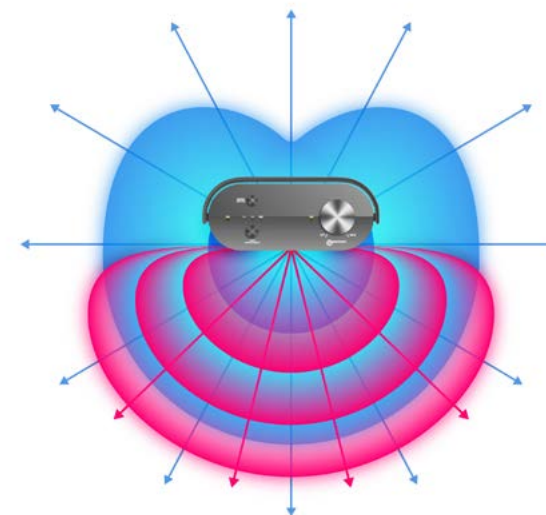


SPEAKER

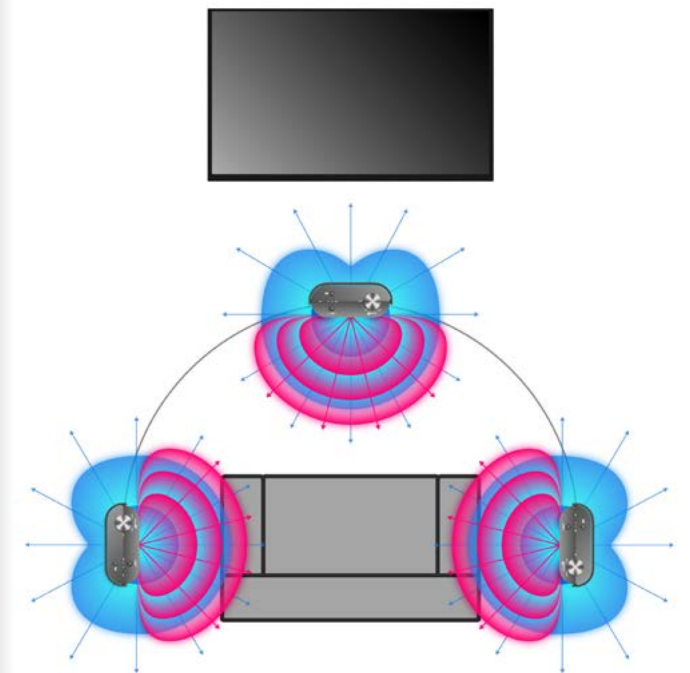
- **Wireless TV Speaker with active noise reduction**
- Easy understanding of speech and dialogue
- 3 different voice enhancement modes
- Easy to use, easy to set up
- Compact and lightweight

- **Charge when connected to a power source via USB-C connector or when placed on base**
- Battery life: over 16 hours in use
- Speaker power: 2 x 5 Watts
- Optical input on the base

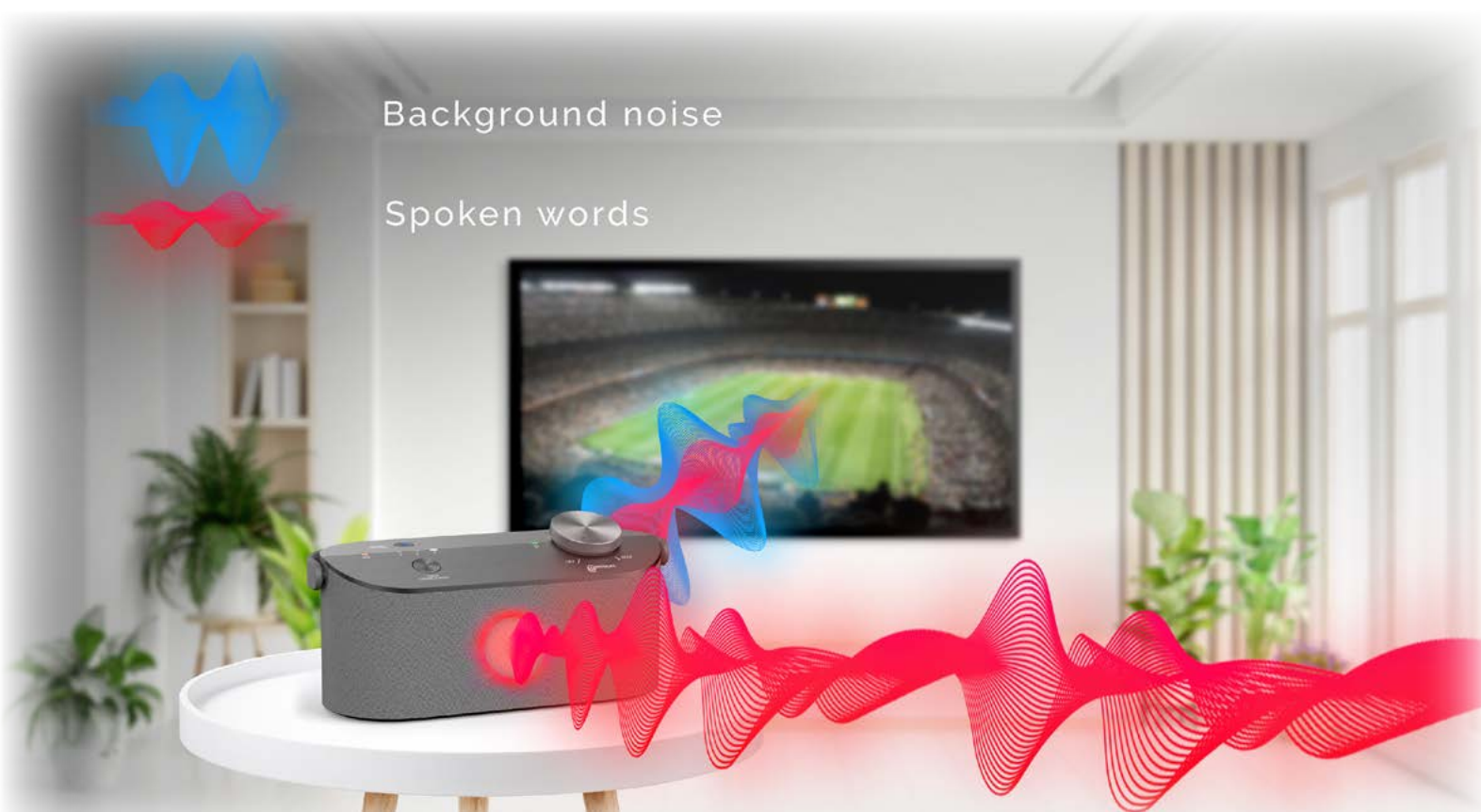
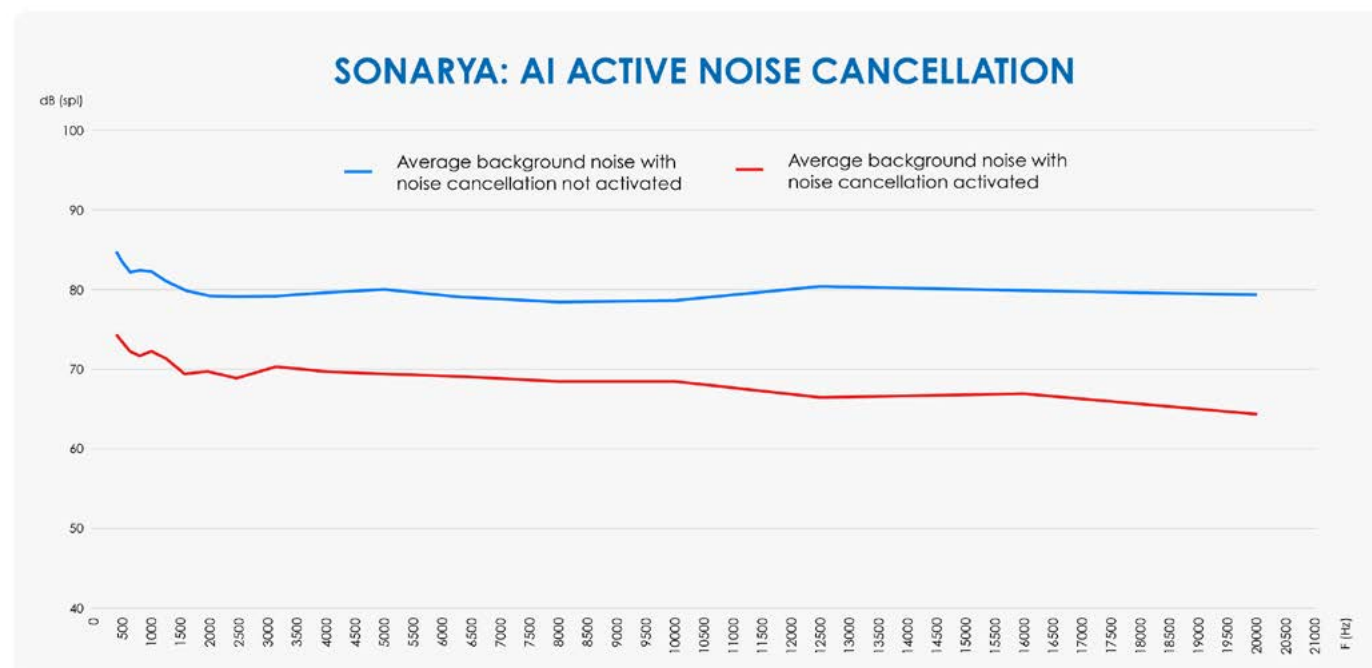
### SONARYA SOUND DIFFUSION



### SONARYA PLACEMENT EXAMPLES







# SONARYA

Utilising AI technology, the noise cancellation feature will help you to understand all the spoken word you hear on your television.

## CL7700

2.4 GHz



- Compatible with all your devices via Bluetooth (version 5.2)
- Possibility to switch from your TV or laptop to your mobile phone to answer a call via Bluetooth
- Can be simultaneously connected to two devices
- Volume adjustable up to **125dB spl**
- Adjustable tone and left/right balance control
- Comfortable and lightweight under chin headset
- Base plugs directly into the optical or analog input of an audio device such as a TV

## CL7500 OPTI

2.4 GHz



- Volume adjustable up to **125dB spl**
- **Cuts out external noise**
- Adjustable volume, tone and balance control
- Selection of either stereo or mono mode
- Tactile identification on the control buttons

## CL7400 OPTI

2.4 GHz



- Volume adjustable up to **125dB spl**
- **Cuts out external noise**
- Adjustable volume, tone and balance control
- Selection of either stereo or mono mode
- Tactile identification on the control buttons

TV HEADSETS



# CL7700

Lightweight, powerful bluetooth and wired TV-headset compatible with all your devices



## | CL7370



TWIN VERSION  
AVAILABLE  
CL7370 TWIN



- Comfortable and lightweight
- Stereo reception
- **Analogue input only on the base**
- Integrated microphone amplifies the ambient sound
- Adjustable volume up to **125dB spl**
- Adjustable tone and left/right balance control
- The headset recharges itself automatically once placed on the base
- Reaches 100m outdoor and 25m indoor
- Auto off when there is no signal after 4 minutes

## | CL7370 OPTI



TWIN VERSION  
AVAILABLE  
CL7370 OPTI  
TWIN



- Comfortable and lightweight
- Stereo reception
- **Optical and analogue input on the base**
- Integrated microphone amplifies the ambient sound
- Adjustable volume up to **125dB spl**
- Adjustable tone and left/right balance control
- The headset recharges itself automatically once placed on the base
- Reaches 100m outdoor and 25m indoor
- Auto off when there is no signal after 4 minutes

## | CL7370 NL



NEW



\*Included:  
CLA7.1



CLA7.2



- **TV headset amplifier with optical and analogue input on the base**
- Possibility to connect and use your own headset
- Stereo reception
- Adjustable volume up to **125dB spl**
- Integrated microphone amplifies the ambient sound
- Adjustable tone and left/right balance control
- Receiver compatible with headsets or neck loop equipped with male jack 3.5mm
- More than 11 hours of continuous in use time

## | CL7370 AD



- Additional headset for the entire CL7370 range
- **Compatible products:**
  - CL7370 SOLO and TWIN
  - CL7370 OPTI SOLO and TWIN
  - CL7370 NL

## | CL7370 NL RX



NEW

- Additional receptor for the entire CL7370 range
- **Accessories included:** CLA7.1, CLA7.2
- **Compatible products:**
  - CL7370 SOLO and TWIN
  - CL7370 OPTI SOLO and TWIN
  - CL7370 NL

## | CLA7.1



NEW

- Magnetic neckloop with male jack 3.5mm
- Produces a magnetic field that enables the use of hearing aids
- **Compatible product:** CL7370 NL

## | CLA7.2



NEW

- Binaural headset for the CL7370 NL
- **Compatible products:** CL7370 NL and any product equipped with a jack

## | CLA3 A-USB



- Hearing aid compatible
- Extra high sound quality with **20dB** amplification
- Extra sensitive microphone
- LED indicators: headset connected, receiving signal, "mute" function activated
- 1,5 meter cable, up to 2,5 when stretched
- Equipped with a USB connector
- Ideally suited for high background noise environments and for hands free use in video conferences



**CL7370 NL**  
Enjoy your own headset with an amplification.



## | W'n'S CURVE

Watch the video presentation



- Alarm clock with vibrating pad
- Sleek curve design
- Large LED screen with adjustable dimmer switch
- Powerful **95dB** alarm
- USB charging port
- Dimensions: 18 x 9,5 x 5 cm

## | W'n'S VINTAGE



- Alarm clock with extra loud alarm, with vibrating shaker pad
- Powerful **80dB** alarm
- Lamp function + super bright ring of white flashing light
- 5 alarm configurations
- Dimensions: 11,5 x 12,5 x 9 cm

## | SBB 500SS



- Alarm clock with vibrating pad
- Powerful **85dB** alarm
- 4 alarm configurations
- 5 brightness settings
- Dimensions: 14 x 14 x 7 cm

## | SBP 100



- Vibrating travel alarm clock
- 3 alarm configurations
- **70dB** alarm
- Tilting screen
- Dimensions: 10 x 10 x 3 cm

## | W'n'S STAR

Watch the video presentation



- Alarm clock with extra loud alarm and with vibrating shaker pad
- Powerful **95dB** alarm
- Lamp function + super bright ring of led flashing lights
- 4 alarm configurations
- Dimensions: 11,5 x 11,5 x 5 cm

## | W'n'S DYNAMITE

Watch the video presentation



- Alarm clock with extra loud alarm, with vibrating shaker pad
- Powerful **95dB** alarm
- Lamp function + super bright ring of red flashing lights
- 4 alarm configurations
- Dimensions: 11,5 x 11,5 x 5 cm

## | CLA2



- Vibrating shaker pad
- Can be connected to most Geemarc phones/alarm clocks

## | CLA2 EX



- 3 m extension cable for vibrating shaker pad
- Compatible with all Geemarc alarm clocks except the Wake'n'Shake VOYAGER and SBP 100

## | W'n'S VOYAGER BLACK V2

Watch the video presentation



- Vibrating travel alarm clock (2 levels of vibration)
- Powerful **75dB** alarm
- 5 alarm configurations
- Lamp function
- Available in black and white
- Dimensions: 9,5 x 9 x 3 cm

## | W'n'S VOYAGER WHITE V2

Watch the video presentation



- Vibrating travel alarm clock (2 levels of vibration)
- Powerful **75dB** alarm
- 5 alarm configurations
- Lamp function
- Available in black and white
- Dimensions: 9,5 x 9 x 3 cm



**Wake 'n' Shake VINTAGE**



It will shake you up!



## | VISO 5



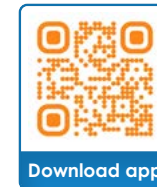
- Clock with large digital display and picture frame
- 4 display formats
- Automatic time adjustment (MSF)
- Wall or table mount
- Dimensions: 20,5 x 19 x 2 cm

## | VISO 8



- Calendar clock with non abbreviated words
- Automatic time setting
- Large digital display
- Wall or table mount
- Dimensions : 22 x 14 x 3,5 cm

## | VISO PHOTO 10



NEW

- **Wi-Fi photo frame**
- Frameo transforms your photo frame into a private social hub
- Easily capture and share photos and videos instantly with friends and family in a fun, secure way anywhere in the world.
- Easy to use touchscreen
- Adjustable slideshow speed
- Auto-rotate - portrait and landscape mode
- Send feedback with 'Reactions'
- Clock and weather forecast
- 32 GB of internal memory + Micro SD card slot
- Frameo app available on Google Play and App Store

## | VISO 10 V2

NEW



- Calendar clock with non abbreviated words
- Automatic time setting
- Large digital display
- Wall or table mount
- Dimensions: 28 x 19 x 2,7 cm

## | VISO 10 WOOD

Watch the video presentation



Same as VISO10  
+ imitation wood frame

## | VISO 50



- Analogue clock and digital display
- 4 display formats
- Automatic time adjustment (MSF)
- Wall or table mount
- Dimensions: 26 x 38 x 4,5 cm

## | VISO 60

NEW

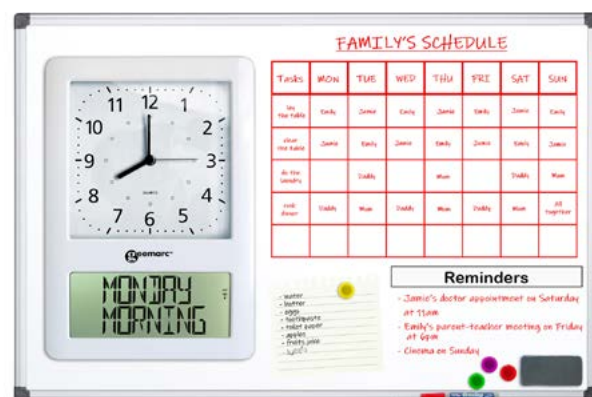


Also available in white.



- Design analogue clock with full words digital display
- 3 display formats
- Automatic time adjustment (MSF)
- Wall mount
- Dimensions: Ø 35 cm for the clock, 16x16 cm for the digital display

## | VISO MEMODAY



- Orientation board with integrated clock
- Automatic time adjustment (MSF)
- Big digital display
- Wall or table mount
- Includes 4 magnets, 1 eraser, 1 marker pen and various stickers
- Dimensions : 70 x 50 x 3 cm
- Different examples of use: simple display of important information, family's agenda, shopping notes, phone numbers, etc...

# VISO PHOTO 10

Share your moments with your family and friends.



# VISO 60

The essentials at a glance.





## TRANSMITTERS

## RECEIVERS



**AMPLICALL 101**  
Doorbell/SOS pendant



**AMPLICALL 110**  
Wireless telephone alerter & transmitter



**AMPLICALL 140**  
Baby monitor + sound sensor



**AMPLICALL 150**  
Wireless portable receiver



**AMPLICALL 100**  
Wireless receiver + doorbell

Compatible with the entire new AMPLICALL range

## IN OPTION



**CLA2**  
Shaker



**CLA2 EX**  
Shaker extension lead

## AMPLICALL 100



- Wireless receiver to pair with an AMPLICALL 110/140/150/101 additional
- Adjustable loud electronic ringer up to **90dB**
- Can be paired with up to 6 transmitters
- Distance between the doorbell and the base: 30 m. The distance achieved indoors can vary

## AMPLICALL 110



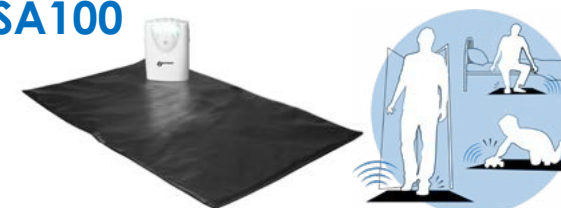
- Wireless telephone alerter/transmitter to pair with an AMPLICALL 100/150, but can also be used alone
- Adjustable loud electronic ringer up to **90dB**
- LED visual ringer indicator
- Distance between the transmitter and the receiver : 30 m. The distance achieved indoors can vary

## AMPLICALL 150



- Wireless receiver to pair with AMPLICALL 101/110/140
- Can be paired with up to 4 transmitters
- Light indicators for the battery levels of the main base and the other transmitters
- Distance between the emitter and the receiver : 30 m. The distance achieved indoors can vary

## AMPLICALL PSA100



- Pressure sensor mat and alerter
- Equipped with sensors, it detects when pressure is being applied and trigger the receiver
- Adjustable ringer volume: **85dB (HI)** or **70dB (LO)**
- Visual ring indicator: flash
- 2 different types of alarms

## AMPLICALL 101



- Doorbell/SOS pendant for the AMPLICALL 100 and 150
- Ring light around the button
- Wall mountable + lanyard holder (lanyard included)

## AMPLICALL 140



- Baby monitor + sound sensor to pair with an AMPLICALL 100/150
- Adjustable sound detection time (1/5/15s)
- Adjustable sensitivity detection : 75/84/90dB
- Distance between the transmitter and the receiver : 30 m. The distance achieved indoors can vary

## AMPLICALL SENTINEL

**ADDITIONAL CAMERAS AVAILABLE**

**What is in the box:**  
1x Monitor  
1x Camera  
1x Shaker Pad  
1x Snake Stand  
2x Magic tape



- Video monitor with shaking pad
- Rotation function, x2 digital zoom
- Night mode camera
- Motion detector
- Temperature detector
- Noise detector

## AMPLICALL PSA200



- Pressure sensor cushion and alerter
- Equipped with sensors, it detects when a person is no longer sitting and triggers the receiver
- The transmitter rings so it can be located more quickly
- Adjustable ringer volume: **85dB (HI)** or **70dB (LO)**
- Visual ring indicator: flash

# GAMME AMPLICALL

Enjoy every moment  
in complete serenity



## PAIRING EXAMPLE N°1

Produits : **AMPLICALL 140** **AMPLICALL 150**

By placing the AMPLICALL140's microphone next to your doorbell or smoke detector, you can have the AMPLICALL150 ring, vibrate and flash to alert you that either one of those devices is ringing.



## PAIRING EXAMPLE N°2

Produits : **AMPLICALL 101** **AMPLICALL 150**



By fixing the AMPLICALL101 on the wall next to your entrance door, you can have the AMPLICALL150 ring, vibrate and flash whenever someone is at your door. The AMPLICALL101 doorbell can also be worn as a SOS pendant, in a household that counts a member who cannot go about his or her day without the help of other family members.

## PAIRING EXAMPLE N°3

Produits : **AMPLICALL 140** **AMPLICALL 100**

By fixing the AMPLICALL101 on the wall next to your entrance door and placing the AMPLICALL140 without its piezo next to your baby's crib, the AMPLICALL100 will flash and ring to alert you whenever someone is at the door, or whenever your presence is needed in your child's room.



## PAIRING EXAMPLE N°4

Produits : **AMPLICALL 110** **AMPLICALL 150** **AMPLICALL 100**



By fixing the AMPLICALL101 on the wall next to your entrance door and connecting the AMPLICALL110 to your telephone, the AMPLICALL 150 and 100 will flash, ring and vibrate to alert you whenever someone is at the door or tries to reach you on the phone.



## |TV PHOTO 100



- Universal remote control with 10 photo memories
- Photo memories are customisable
- Thanks to a software (available on our website), possibility of saving a channel with a 1 to 3-digit number in each customisable key

- Upload the software via the supplied USB/jack cable
- 2 available modes: DEVICE mode and PHOTO MEMORY mode
- Light indicator shows the mode currently selected
- Compatible with most infrared devices



## |TV1



- Universal remote control
- 19 programmable buttons
- Is to be paired with 1 single device
- Simple to use and program
- Original remote control required

## |TV5



- Universal remote control
- 7 programmable buttons
- Can be paired with 2 devices
- Simple to use and program
- Original remote control required

## |TV10



- Universal remote control
- 19 programmable buttons
- Can be paired with 2 devices
- Simple to use and program
- Original remote control required

## |TV15



- Universal remote control
- 14 programmable buttons
- Can be paired with 2 devices
- Simple to use and program
- Original remote control required

## |KEYBOARD



- Plug and play
- 104-keys high contrast keyboard
- Big letter (1 cm) keyboard
- USB connection
- Available in white, yellow and black



## |LH10 V2



- Amplified hearing assistant
- Induction loop receiver
- Adjustable receiving volume up to **30dB**
- Adjustable tone and balance
- Super sensitive built in microphone

## |LH102 V2



- Reception induction loop
- Option to connect external induction loop
- Complies with **EN60118-4**

## |LH102 V2 LT



Same as LH102 V2  
**but without the external microphone on stand and the external ear piece**



## |LH102 V2

For use in all public places and by all hearing impaired people, with or without hearing aids.

## |L2T10



Watch the video presentation



NEW

- **Connection interface for speech transcription mobile application**
- See the voice messages / announcements transmitted through a magnetic loop, and only those, written on either your smartphone or tablet.

- Connect the L2T10 to the USB-C port of your device and launch a speech transcription app.
- Compatible with any device with a USB-C port
- Dimensions: 50 x 30 x 6 mm
- Weight: 5g



## |L2T10

Convert voice to to text.



## | Room Pack



- Amplifier for fixed induction loop
- Option to connect external loop of 10 up to 50 m<sup>2</sup>
- Can be wall mounted
- Supplied with cable reel and desk microphone

## | WalLoop Pack



- Induction loop amplifier
- Supplied with WalLOOP (panel including induction loop) and desk microphone
- Ideal for reception desk or drive-through kiosk

## | Car Pack



- Amplifier for induction loop used in vehicles
- Supplied with induction coil mat, cigarette lighter adapter and lapel microphone



# LH160 V2 WALLOOP PACK

Give all your customers or visitors the welcome they deserve



**DON'T FORGET  
TO VISIT  
OUR YOUTUBE  
CHANNEL!**

**New products  
presentation**

**Unboxing  
videos**

**Tutorial  
videos**

**GEEMARC TELECOM**

Subscribe to make sure you  
don't miss any new video!



At Geemarc Telecom, we are committed to act in favour of the environment. That is why we are always aiming at reducing the percentage of plastic in our packaging. Every year, we also participate in the development of the recycling sector through financial contributions.

SILVER | Top 15%

**ecovadis**  
Sustainability Rating  
AUG 2024

GEEMARC TELECOM SA has received a  
**silver medal** for its CSR performance!



**Valpak**

VALPAK is the UK's largest and most established environmental compliance scheme. It's a non-profit eco-organization publicly licensed to help companies handle the collection, treatment, and recycling of waste electrical and electronic equipment in the United-Kingdom.

Geemarc Telecom also contributes financially to the development of the recycling industry in other countries.



In France, ECO-EMBALLAGE is a private company licensed by the State to handle the sorting and recycling of household packaging all over the country.



In Germany, GRS BATTERIEN is an eco-organization which works to collect and recycle all types of used batteries.





Discover the full  
Geemarc range at  
[www.geemarc.com](http://www.geemarc.com)

Visit the website >



## SUBSCRIBE TO OUR YOUTUBE CHANNEL

STAY TUNNED AND NEVER  
MISS ANY OF OUR VIDEOS!



This document may in no circumstances be considered contractual.  
All information contained is given for indicative purposes and may  
be modified without prior notice.

Tel.: +44 (0) 1707 387606  
E-mail : [sales@geemarc.com](mailto:sales@geemarc.com)

**geemarc**<sup>TM</sup>  
Telecom SA

LL26UKC0101

