

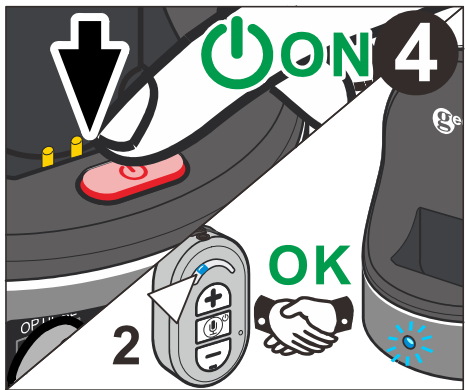
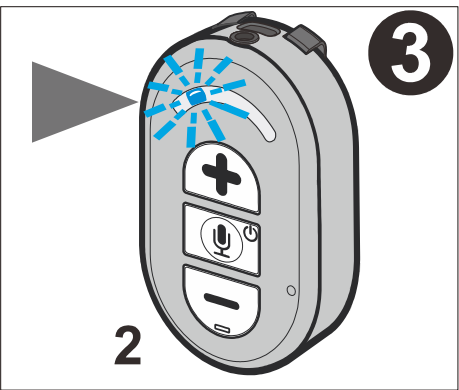
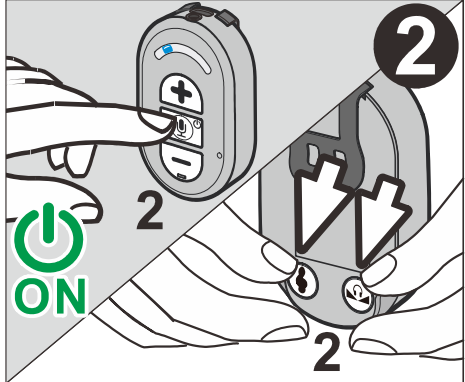
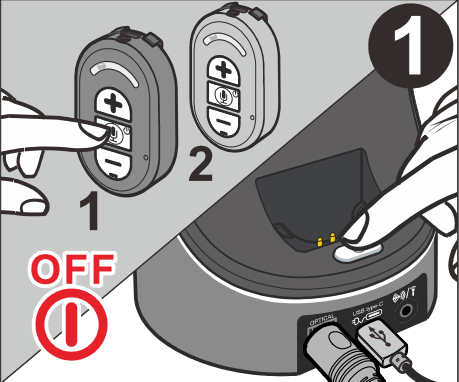
Pairing an extra Receiver:

To pair Base and receiver ensure battery is fully charged and the Base is connected to mains power (see section "Initial Operation" for receiver charging). Proceed as follows:

1. Power off all the paired receivers by pressing 3 seconds the **ON/OFF** button. Switch off the Base (by pressing the rear button of the base).
2. Take and Power ON the extra receiver then press and hold down the **"TONE"** and **"BALANCE"** buttons at same time until the **blue** LED in the receiver front is in fast flashing, then release the buttons.
3. Switch **ON** the base and the **blue** LED start fast flashing, When the **blue** LED stop flashing and lights up, the pairing is complete automatically.

Note: 1. After the Receiver enter pairing mode, you must switch on the base as soon as possible (within 20 seconds).

2. If the pairing process is not successful, please power off the receiver and base, then repeat the pairing process again.



Note: for all the others functions and descriptions of your receiver, please read the main user guide of your base (CL7370TX).

GUARANTEE

From the moment your Geemarc CL7370/NL receiver product is purchased, Geemarc guarantee it for the period of two years. During this time, all repairs or replacements (at our discretion) are free of charge. Should you experience a problem then contact our Helpline or visit our website at www.geemarc.com. The guarantee does not cover accidents, negligence or breakage to any parts. The product must not be tampered with or taken apart by anyone who is not an authorised Geemarc representative.

The Geemarc guarantee in no way limits your legal rights.

Important : YOUR RECEIPT IS PART OF YOUR GUARANTEE AND MUST BE RETAINED AND PRODUCED IN THE EVENT OF A WARRANTY CLAIM.

UKCA / CE DECLARATION

Geemarc Telecom SA hereby declares that this CL7370/NL receiver is in compliance with the essential requirements and other relevant provisions of the Radio Equipment Directive 2014 / 53 / UE.

The declaration of conformity may be consulted at www.geemarc.com

FCC compliance

This device complies with Part 15 of the FCC Rules. Operation is subject to the following two conditions:

(1) This device may not cause harmful interference, and (2) this device must accept any interference received, including interference that may cause undesired operation.

RF Exposure Statement

To maintain compliance with FCC'S RF Exposure guidelines, This equipment should be installed and operated with minimum 20cm between the radiator and your body. This device and its antenna(s) must not be co-located or operation in conjunction with any other antenna or transmitter.

NOTICE: This class B digital apparatus complies with Canadian ICES-003. This product meets the applicable Industry Canada technical specifications.

CAN ICES-3B/NMB-3B FCC ID: 2A9CR-CL7370, IC: 29704-CL7370NL, 29704-CL7370Opt

BATTERY WARNINGS

- **DO NOT** attempt to dismantle.
- **DO NOT** dispose of in fire.
- **DO NOT** swallow.
- Keep away from children.
- **DO NOT** short-circuit the Battery Contact terminals.
- Exhausted batteries are to be replaced only by a certified Geemarc service technician.
- **Caution :** Risk of explosion if battery is replaced incorrectly or if the wrong type of battery is used. Dispose of used batteries according to the instructions.



For product support and help visit our website at www.geemarc.com

E-mail : help@geemarc.com Telephone : **01707 387602**

lines are open from **10:00-12:00** then **13:00-14:30** Mon. to Fri.

Parc de l'étoile, 2 rue Galilée, 59760 Grande-Synthe, France

Made for Geemarc Telecom S.A. in China

