

# AMPLIFIED DIGITAL WIRELESS TV HEADSET WITH NECKLOOP


(Product can support 2 Headsets)



# Contents


!!!Please ensure you read the user manual thoroughly before use!!!

!!!Please refer to our website: [www.geemarc.com](http://www.geemarc.com) for an up to date user guide, as there may be important updates and changes you need to be aware of !!!

<b>INTRODUCTION</b> .....	<b>2</b>
 <b>SAFETY &amp; CARE ADVICE</b> .....	<b>4</b>
<b>PACK COMPONENTS</b> .....	<b>5</b>
<b>FUNCTION IDENTIFICATION</b> .....	<b>6</b>
• Receiver .....	6
• Base Charging Cradle .....	8
<b>INSTALLATION</b> .....	<b>9</b>
• Transmitter .....	9
• Receiver .....	10
<b>OPERATION</b> .....	<b>11</b>
• Initial Operation .....	11
• Routine Operation .....	11
• Controlling the Tone (Bass & Treble) .....	13
• Adjusting the Sound Balance (left-right) .....	13
• Using the Mute Button and Microphone for Conversation .....	14
• Charging the Battery .....	14
• Pairing an extra receiver .....	15

# INTRODUCTION



<b>TROUBLESHOOTING</b> .....	<b>17</b>
• No Sound .....	17
• Distortion .....	17
<b>Cleaning &amp; Maintenance</b> .....	<b>18</b>
<b>Spare/replacement parts</b> .....	<b>18</b>
<b>Customer support</b> .....	<b>18</b>
<b>GUARANTEE</b> .....	<b>19</b>
<b>CE/ UKCA DECLARATION</b> .....	<b>19</b>
 <b>BATTERY WARNINGS</b> .....	<b>19</b>
<b>DISPOSAL INFORMATION</b> .....	<b>20</b>
<b>FEATURES</b> .....	<b>20</b>
<b>TECHNICAL SPECIFICATIONS</b> .....	<b>21</b>

## INTRODUCTION

The Geemarc CL7370NL Digital Wireless Audio Listener is an audio amplification system specifically designed for people with hearing loss who wear a hearing aid with the T position.

The Geemarc CL7370NL Audio Listener can be used with all kinds of audio systems for interference-free listening enjoyment – **TV set, Smartphone, DVD player, CD player, Hi-Fi system, iPod or other.**

Audio output from a TV or audio device is transmitted by the Charging Cradle(Base), the wireless receiver receives the signal and amplifies the audio sound for the listener.

# Introduction

One Base can support 2 receivers for charging.

The listener's comfort and long-term enjoyment has been built into every feature of the Geemarc Wireless Audio Listener:

- Lightweight wireless headset fitted with a neck loop for prolonged listening comfort;
- Rich, adjustable audio quality:
  - Broad audio bandwidth, High quality sound.
  - Adjustable EQ and balance (not in loop mode, only mono sound) to compensate for hearing loss.
- Listen but keep in touch with your surroundings:
  - Multiple receivers can be paired with one Charging Cradle;
  - Single-touch Mute function switches the Audio Listener into a conversation assistant enabling you to talk with and listen to the people around you with the Headset on, taking advantage of its built-in audio amplifier to hear everything better.
- Up to 11 hours of rechargeable battery life per full charge – never lose the soundtrack in mid-program;
- Only 3 hours to fully recharge the Headset simply by replacing the Headset in its Charging Cradle.
- Auto Power OFF Headset simply by replacing the Headset in its Charging Cradle.
- Auto Power ON Headset simply by removing the Headset from its Charging Cradle within 5 minutes.

## **IMPORTANT NOTICES:**

CL7370NL extra receiver. Please refer to the section “Pairing an extra receiver” for special operation.

# SAFETY & CARE ADVICE



## SAFETY & CARE ADVICE

---

To make the best use of this product and to use it safely, please read these instructions thoroughly before use and keep safe for future reference.

**Warning:** This product can be very loud. Take care to prevent others from using this product, if they do not have the same level of hearing loss. Excessive sound pressure from earphones and headphones can cause hearing loss.

**Caution: Electric shock. DO NOT** insert unattached plug heads in to mains power sockets. Plug heads **MUST** be fitted to the power adaptor.

**Electrical connection:** The unit is designed to operate from a 100-240VAC - 50/60Hz supply. (Classified as 'hazardous voltage' according to EN 62368-1 standard).

**Caution: Batteries should only be replaced by Geemarc or authorised Vendor. Please refer to the chapter: <Spare / replacement parts> for more information.**

Keep the unit away from heat sources.

**DO NOT** expose the unit to direct sunlight.

Do not expose the receiver, which contains batteries, to excessive heat such as sunshine, fire etc.

**DO NOT** modify the unit in any way.

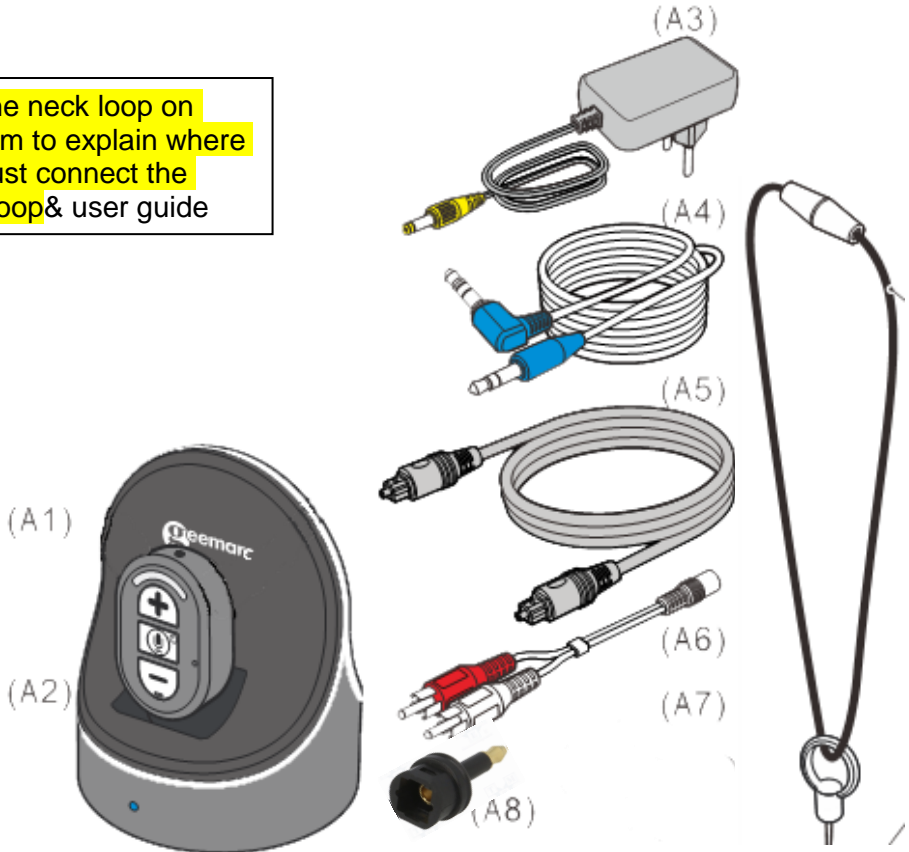
**Please note:** The unit may be subject to interference from appliances that generate strong electrical or magnetic fields e.g. wireless Internet routers, microwaves, mobile phones, lighting transformers etc. To avoid this interference, place the Charging Cradle unit away from such sources.



# PACK COMPONENTS

## PACK COMPONENTS

Add the neck loop on diagram to explain where we must connect the neck loop & user guide



(A1) Receiver

(A2) Charging Cradles and Transmitter

(A3) Power Supply

(A4) Audio Cable (both ends with 3.5 mm stereo plug)

(A5) Toslink Cable for Optical Digital Audio Connection.

**IMPORTANT: Before using the cable remove the clear plastic protective covers from both ends.**

(A6) 3.5mm to 2 pin RCA Adapter Cable

(A7) Lanyard for receiver

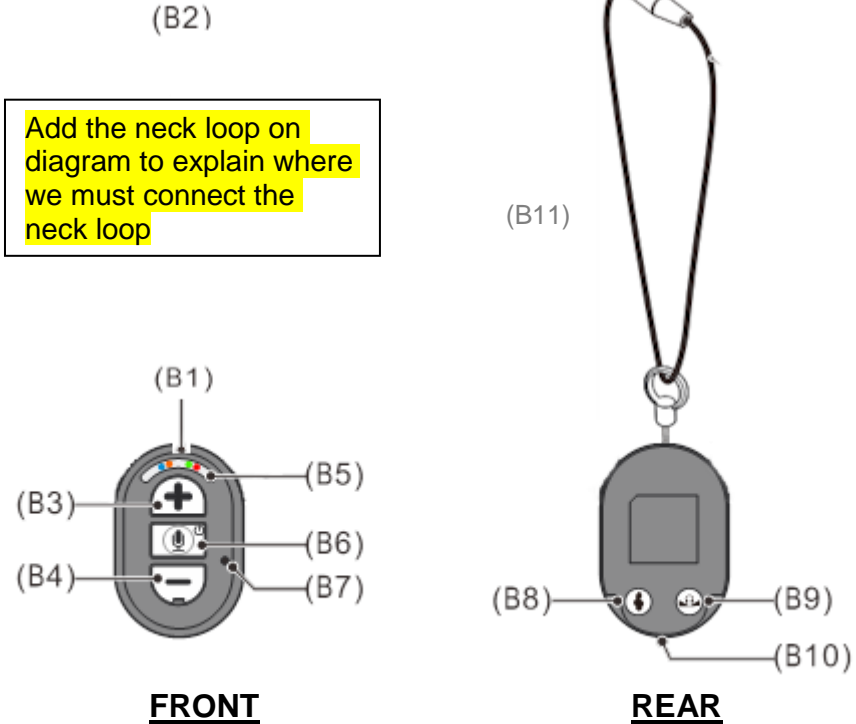
(A8) Mini optical jack (option follow the country)

(A9) User guide

# FUNCTION IDENTIFICATION

## FUNCTION IDENTIFICATION

### Receiver



(B1) Jack 3.5mm to connect the neck loop

(B2) Neck loop

(B3) Volume Increase Control, Balance Control

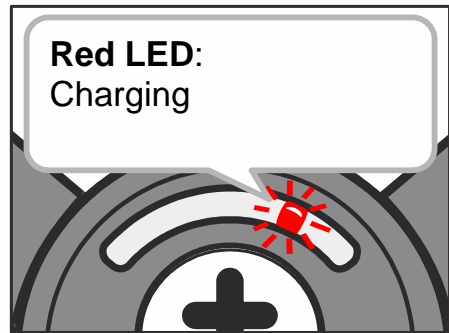
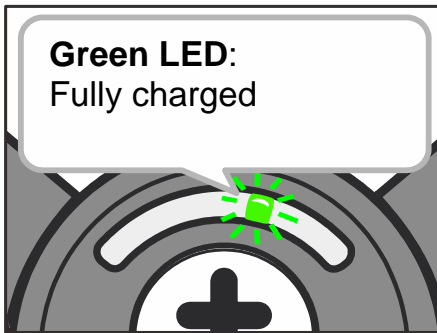
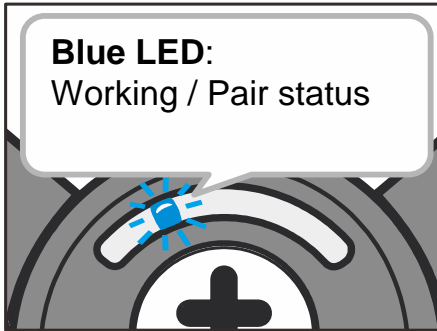
(B4) Volume Decrease Control, Balance Control

(B5) Power/Signal/Charging/Local Microphone LED Indicators:

- Battery Charge (**Red** = charging, **Green** = fully charged)
- LED Indicator (**Orange**): Local Microphone Amplification for Verbal Communications.
- LED Indicator (**Blue lights up**): Paired with Transmitter.
- LED Indicator (**Blue Slow flashing**): Not Paired with Transmitter, or Transmitter is powered off.

# FUNCTION IDENTIFICATION

- LED Indicator (**Blue Fast flashing**): in Pairing Mode.



(B6) Power Button and Mute Button for Verbal Communications

- Long press to Power OFF headset.
- Short press to Power ON headset.
- Short press to switch between wireless TV listening and Local Microphone amplification for Verbal Communications.

(B7) Microphone

(B8) Tone Adjustment

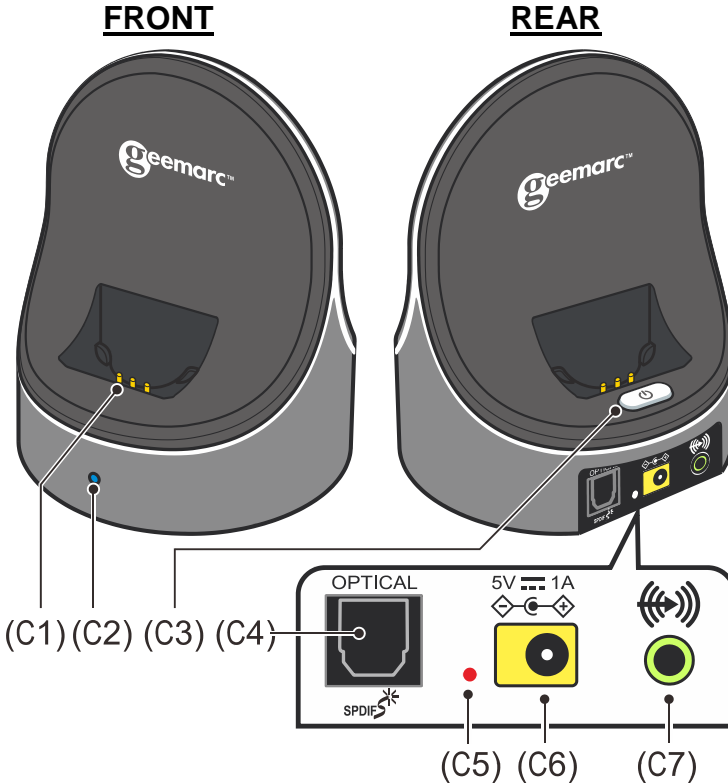
(B9) Sound Balance Control

(B10) Load Contacts

(B11) Lanyard

# FUNCTION IDENTIFICATION

## Base Charging Cradles(Transmitter)



(C1) Charging Pins

(C2) Pair LED Indicator:

- **Blue Lights up** - Paired Headsets found;
- **Blue Slow flashing** - Not paired devices found;
- **Blue Fast flashing** - Not paired devices found or No sound input for more than 10 minutes.

(C3) Power Switch

(C4) Optical Digital Audio In (for the optical version only)

(C5) Power ON/OFF LED Indicator: **Red** = Power ON.

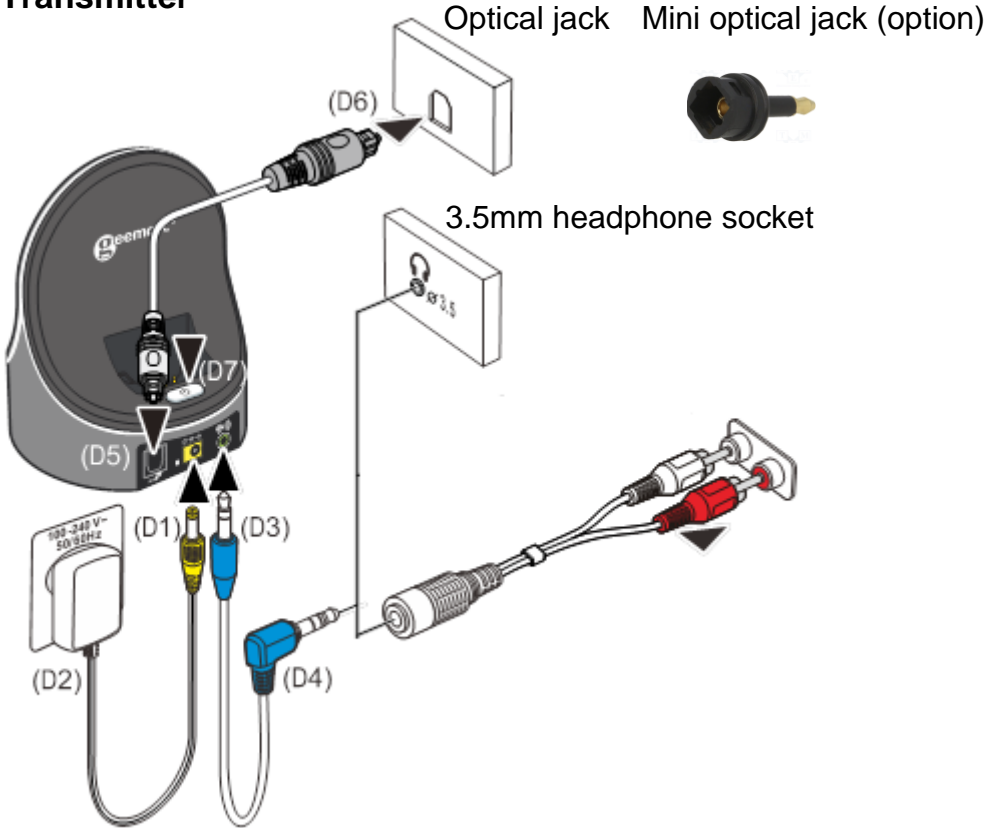
(C6) DC In Socket 5V/1A

(C7) Analogue Audio Input 3.5mm

# INSTALLATION

## INSTALLATION

### Transmitter



(D1) Connect the Power Supply to yellow Socket (5V/1A) located on the Charge Cradle rear panel.

(D2) Connect the Power Supply to an electricity socket (100-240V ~ 50/60Hz).

(D3) Connect one end of the Audio Cable to Analogue Audio Input in the rear panel of the Charge Cradle.

(D4) Connect the other end of the Audio Cable to your Audio Source (e.g. TV set, Hi-Fi system, MP3 or iPod).

If your Audio Source does not have a suitable socket for the Audio Cable's 3.5 mm stereo plug, then use one of the Adapters provided:

- RCA Adapter Cable;

(D5) Connect one end of the **Toslink Cable** to Digital Audio Input in the rear panel of the Charge Cradle.

(D6) Connect the other end of the **Toslink Cable** to your Audio Source with optical digital audio output (e.g. TV set, Hi-Fi system).

If you need, you can use the micro Toslink jack to connect at your audio source. (in option follow the country)

(D7) On the rear side of the Charging Cradle, press the Power ON/OFF button to Switch to ON, the red LED will light up.

**Note:** When using CL7370NL Digital Version with a digital audio input signal the TV audio output must be set to PCM mode. CL7370NL is not compatible with Dolby Digital. The PCM setting can normally be done using the audio menu settings of the TV. Please refer to your TV/DVD/Satellite/Cable Box user's manual for instructions for setting to PCM mode.

## Receiver

Make sure the built-in Battery inside the receiver is fully charged for the first use – see Initial Operation below.

Add the neck loop on diagram to explain where we must connect the neck loop

- Connect your neck loop in the jack 3.5mm
- Place your neck loop around the neck
- Set your hearing aid on T position.
- **NOTE:** The induction neck loop has an "easy-break" plug and socket (refer to the sketch on page 4). Should the loop become tangled or you are having difficulty removing the loop from around your neck simply pull on the loop near the easy-break and it will come free easily.

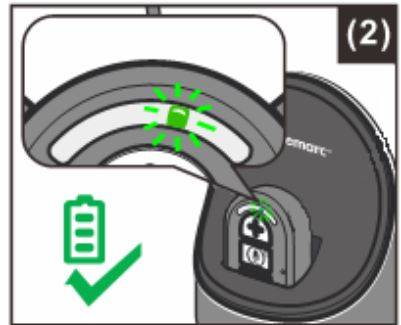


# OPERATION

## OPERATION

### Initial Operation

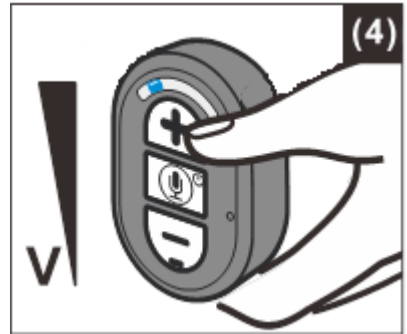
1. Make sure the charging cradle is plugged into the main.
2. Switch ON the charging cradle on the back of the Charging Cradle (see figure (1) on the right).
3. Place the receiver in the Charging Cradle for at least three hours to allow it to fully charge.
  - The receiver is switched OFF automatically when it is placed in the Charging Cradle.
  - The LED Indicator shows red during charging.
  - It will glow green when the battery is fully charged (see figure (2) on the right).
4. After three hours and when the charging LED has turned green, you can proceed to the Routine Operation.



### Routine Operation

1. Turns ON the Audio Source (TV set or audio device) where the Transmitter is connected to.
2. Take out the Receiver from the charging cradle, receiver will turn ON automatically, (if not, short press the MIC button to power on the Headset). The blue signal LED Indicator both on Base and receiver will glow continuously. (see figure (3) on the right).

3. Adjust the Volume to the desired sound level (see figure (4) on the right), Press '+' button to increase volume and '-' button to decrease volume. Neck loop sends beeps at your hearing aid when volume reaches maximum or minimum.



**NOTE:** Make sure the volume on your Audio Source (TV set or other audio device) is turned up to at least half of its full volume to get good sound quality in your hearing aid.



## NOTE:

1. The receiver will turn off automatically if there is no audio signal from the audio source (TV set, etc.) or a too weak signal within about **15 minutes**, if you want to resume receiver in this case, you can short press the MIC Button to Power on the receiver.
2. Auto Power OFF receiver simply by replacing the receiver in its Charging Cradle.
3. Auto Power ON receiver simply by removing the receiver from its Charging Cradle. - This is only available when a Power on receiver is replaced into Charging Cradle.
4. If you place a power off receiver into its charging cradle, the receiver cannot be Powered on automatically when you take it again. In this case, just short press MIC button to Power on receiver.

# OPERATION

## Controlling the Tone (Bass & Treble)

You can adjust the tone of the audio you are listening and to enhance your listening pleasure by amplifying either the Treble or the Bass in the Neck Loop Receiver.

Press the Tone Button on the rear of receiver to switch cyclically between:

1. Enhanced bass,
2. Enhanced treble,
3. Flat tone (bass and treble equally enhanced).

Neck loop beeps when tone adjustment reaches the default setting (the flat tone).

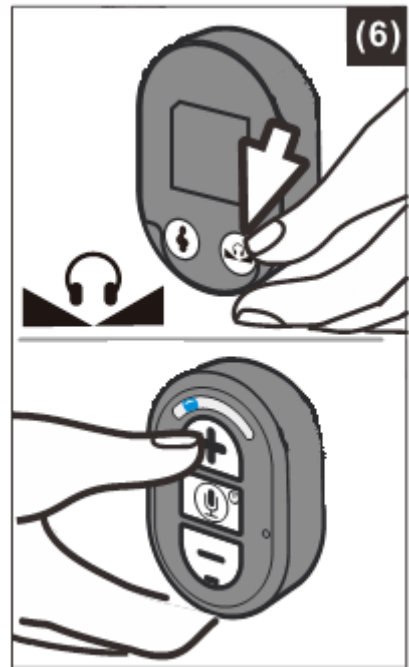


## Adjusting the Sound Balance (left-right, function available only with headphone instead of Neck loop)

You can adjust the sound to suit your hearing in each ear. With the receiver on, press the Balance Button on the rear of receiver to enter balance mode. Press '+' button to decrease sound on RIGHT side. Press '-' button to decrease sound on LEFT side (see figure 6 on the right).

Receiver beeps when balance reaches maximum, middle or minimum. Press Balance Button again to exit balance mode and come back to the normal mode.

**Note: if you forget to exit balance mode for more than 6 seconds, unit will come back to normal mode automatically.**



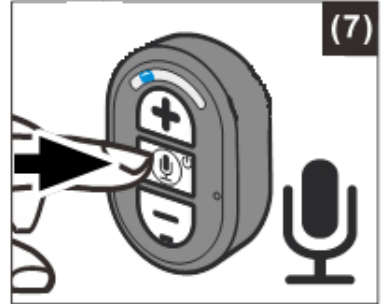
## Using the MIC Button for Conversation

You can switch from Listening mode to Conversation mode without having to take off the Neck loop.

To talk or listen someone:

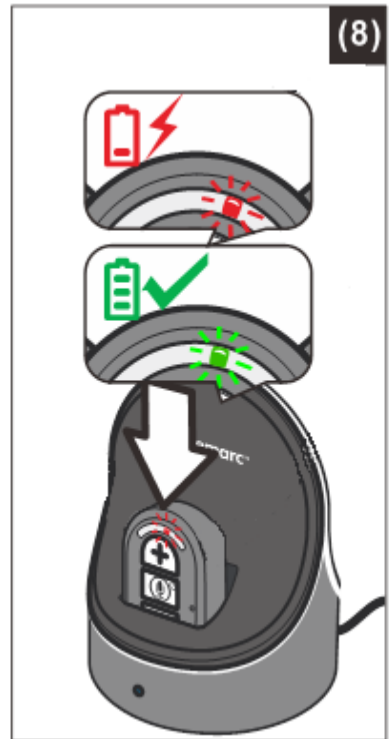
1. Short Press the MIC button (see figure (7) on the right). This will shut off the Audio Source and the receiver will become an amplifier by activating the Microphone.
2. To resume listening to your audio device, Short press the Mute button again. The microphone will be shut off and the audio will resume.

**Note:** long press the Mute button will power off the receiver, simply short press the Mute button again to resume receiver.



## Charging the Battery

1. The neck loop will send some beeps when the battery level is low. At this stage there are about 20 minutes of operating time before the receiver will switch off. Recharge the battery.
2. Place the receiver on the Charging Cradle (see figure (8) on the right), make sure the charge contact touches the charge pins on the Charging Cradle.
3. The Charging process starts automatically.
  - The LED Indicator glows red during charging.
  - It will glow green after the battery is fully charged.



# OPERATION

## WARNING:

The battery must not be exposed to excessive heat such as sunshine, fire etc.

Do not attempt to replace the original rechargeable battery.

The battery must always be fully charged before first use. An initial 3 hours charge is required to guarantee an acceptable service life for the rechargeable battery.

Excessive sound pressure from earphones and headphones can cause hearing loss.

## IMPORTANT:

This unit should be operated with built-in rechargeable battery only. When replacing the battery or when disposing of the unit, always comply with applicable laws relating to the disposal of battery. Please place them in a proper disposal container to ensure that they are eliminated safely and in an environmentally friendly way.

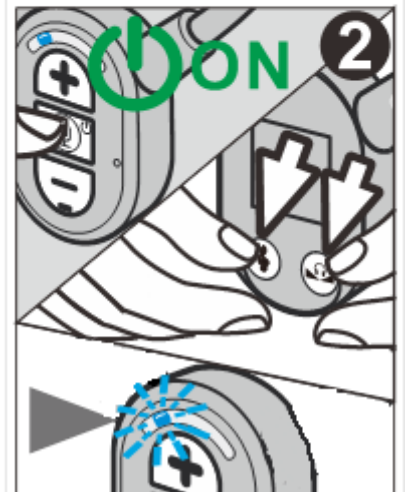
## Pairing an extra Receiver:

To pair Base and receiver ensure battery is fully charged and the Base is connected to mains power (see section "Initial Operation" for receiver charging). Proceed as follows:

1. Power off all the paired receivers.. (by pressing 3 seconds the rear button of the base).

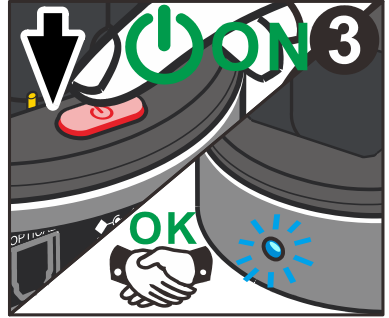
Switch off the Base

2. Take and Power ON the extra receiver then press and hold down the "TONE" and



② "BALANCE" buttons at same time until the **blue** LED in the receiver front is in fast flashing, then release the buttons.

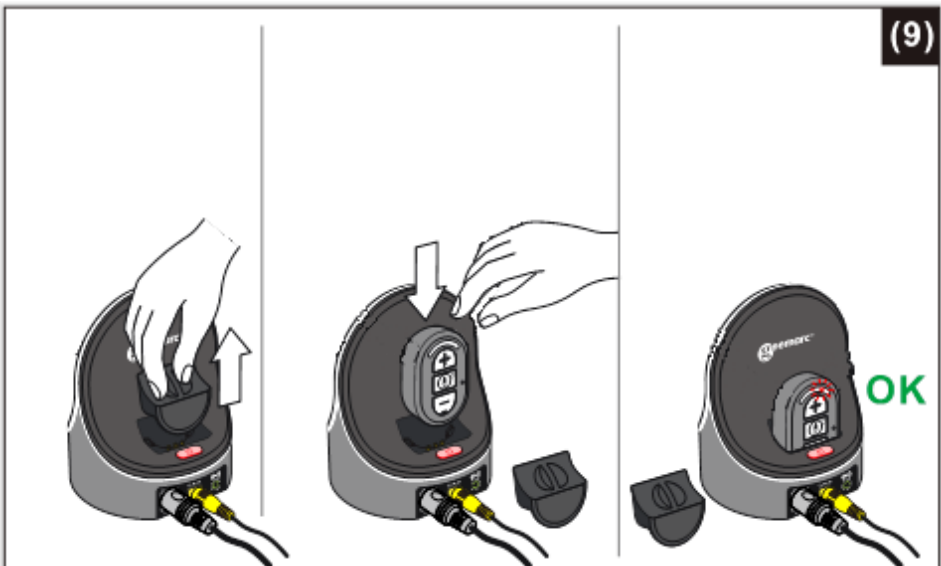
③ Switch **ON** the base and the **blue** LED start fast flashing, When the **blue** LED stop flashing and lights up, the pairing is complete automatically.



## Note:

1. After the Receiver enter pairing mode, you must switch on the base as soon as possible (within 20 seconds).
2. If the pairing process is not successful, please power off the receiver and base, then repeat the pairing process again.

The extra receiver can be charged in the rear charging cradle on the base, in this case, you should remove the cover of rear charging cradle and place the extra headset on the rear charging cradle. See figure (9)



# TROUBLESHOOTING



## TROUBLESHOOTING

---

### No Sound

- Ensure the power supply is properly plugged into the electricity socket and that its cable is properly connected to yellow connector 5V/1A on the Charge Cradle.
- Ensure that the receiver is switched ON (fix Blue Led).
- Ensure that your hearing aid is set on T position
- Check the state of the Battery charging in the receiver – place it in the Charge Cradle and recharge the battery until the Battery Charge LED turns green.
- Ensure that the TV set, Hi-Fi system or audio component is switched ON and set to a channel that broadcasts an audio signal.
- Ensure that the volume on the connected audio component is turned up to at least half its full volume.
- The connected audio/video equipment may not be in playback mode. Start playback on by the equipment.
- Use the + button on the receiver to turn up the volume.

### Distortion

- The battery inside receiver may need charging. Recharge the battery.
- The receiver may be too far away from the transmitter inside the Charge Cradle. Bring them closer together.
- The audio signal input level from the audio source is too low. Increase the volume on the audio source.

# Cleaning & Maintenance . Spare/replacement parts . Customer support

## Cleaning & Maintenance

---

**Note: DO NOT** use alcohol, chemical or spirit based cleaning agents.

Wipe Base, receiver and neck loop clean with a damp cloth.

## Spare/replacement parts

---

Spare parts are available from either the original place of purchase or by calling the Customer Helpline Telephone:

**01707 387602**

1. Additional receivers
2. Ear pads

To replace the receiver battery, please contact Customer Support.

## Customer support

---

For product support and help, visit our website at  
**[www.geemarc.com](http://www.geemarc.com)**

E-mail : **[help@geemarc.com](mailto:help@geemarc.com)**

For our Customer Helpline Telephone: **01707 387602**

# GUARANTEE . UKCA CE DECLARATIONS BATTERY WARNINGS

## GUARANTEE

---

From the moment your Geemarc CL7370NI product is purchased, Geemarc guarantee it for the period of two years. During this time, all repairs or replacements (at our discretion) are free of charge. Should you experience a problem then contact our Helpline or visit our website at [www.geemarc.com](http://www.geemarc.com). The guarantee does not cover accidents, negligence or breakage to any parts. The product must not be tampered with or taken apart by anyone who is not an authorised Geemarc representative.

The Geemarc guarantee in no way limits your legal rights.

**Important:** YOUR RECEIPT IS PART OF YOUR GUARANTEE AND MUST BE RETAINED AND PRODUCED IN THE EVENT OF A WARRANTY CLAIM.

## UKCA/ CE DECLARATION

---

Geemarc Telecom SA hereby declares that this CL7370NI is in compliance with the essential requirements and other relevant provisions of the Radio Equipment Directive 2014/53/UE.

*The declaration of conformity may be consulted at [www.geemarc.com](http://www.geemarc.com)*



## BATTERY WARNINGS

---

- **DO NOT** attempt to dismantle.
- **DO NOT** dispose of in fire.
- **DO NOT** swallow.
- Keep away from children.
- **DO NOT** short-circuit the Battery Contact terminals.
- Exhausted batteries are to be replaced only by a certified Geemarc service technician.
- **Caution:** Risk of explosion if battery is replaced incorrectly or if the wrong type of battery is used. Dispose of used batteries according to the instructions.



# DISPOSAL INFORMATION . FEATURES

## DISPOSAL INFORMATION

---



**Disposal of old electrical & electronic equipment  
(applicable in the European Union and other European  
countries with separate collection systems)**

The symbol on the product or its packaging indicates that this product may not be treated as household waste. Instead it should be handed over to the applicable collection point for the recycling of electrical and electronic equipment.

By ensuring this product is disposed of correctly, you will help prevent potential negative consequences for the environment and human health, which could otherwise be caused by inappropriate waste handling of this product.

For more detailed information about recycling this product, please contact your local council office, your household waste disposal service or the shop where the product was purchased.

## FEATURES:

---


1. Digital 2.4 GHZ AFHSS transmission (Adaptive Frequency Hopping)-CD sound quality!
2. 16 hopping channels.
3. Receiving amplification: up to 120dBspl.
4. Frequency response: 100- 16000Hz.
5. Operating indoor range up to 25 meters from the transmitter.
6. Continuous usage time: up to 11 hours.
7. Charged when you need it. Receiver recharges itself when placed back into Base unit.
8. Receiver Auto Power OFF when placed back into Base unit.
9. Receiver Auto Power ON when took from the Base unit.
10. 3.5mm audio input stereo jack access in Base unit.

# TECHNICAL SPECIFICATIONS

11. Optical Digital audio input jack access in Base unit.

12. Receiver Weight : 38g.

## TECHNICAL SPECIFICATIONS

Transmission mode	: <b>Digital 2.4GHz AFHSS</b> (Adaptive Frequency Hopping) – CD sound quality!
Carrier frequency	: 2.4GHz
Frequency response	: 100 Hz – 16000 Hz
Hopping channels	: 16
Receiving amplification	: up to 120 dBspl
Range	: Up to 25 meters (open area)
Receiver weight	: 38 grams
Operating voltaje	: Charging Cradle: DC 5V  1.0A, 5W : Receiver: 3.7V, 900mAh Lithium Polymer Battery
Battery operating Time	: Up to 11 Hours
Radio Frequency Power	: <20 dbm



For product support and help visit our website at

**[www.geemarc.com](http://www.geemarc.com)**

Parc de l'étoile, 2 rue Galilée, 59760 Grande-Synthe,  
France

E-mail : **[help@geemarc.com](mailto:help@geemarc.com)**

Telephone : **01707 387602**

lines are open 09h00 to 16h00 Mon to Fri

Made for Geemarc Telecom S.A. in China





UGCL7370Opti\_NL\_En\_v1.1

