



CL7370 NL

Neck Loop Opti

AMPLIFIED DIGITAL WIRELESS TV NECK LOOP BASE


(Product can support 2 Receivers)





Contents

!!!Please ensure you read the user manual thoroughly before use!!!

!!!Please refer to our website: www.geemarc.com for an up to date user guide, as there may be important updates and changes you need to be aware of!!!

INTRODUCTION	4
 SAFETY & CARE ADVICE	6
PACK COMPONENTS	7
FUNCTION IDENTIFICATION	8
• Receiver (CL7370NL_RX).....	8
• Base Charging Cradle (CL7370TX ,.....	10
INSTALLATION	11
• Transmitter (CL7370TX ,.....	11
• Receiver (CL7370NL_RX).....	12
OPERATION	13
• Initial Operation	13
• Routine Operation	13
• Controlling the Tone (Bass & Treble)	15
• Adjusting the Sound Balance (left-right)	15
• Using the Mute Button and Microphone for Conversation	16
• Charging the Battery	16
• Pairing an extra receiver	17

Contents

 TROUBLESHOOTING	19
• No Sound	19
• Distortion	19
Cleaning & Maintenance	20
Spare/replacement parts	20
Customer support	20
GUARANTEE	21
CE / UKCA DECLARATION	21
 BATTERY WARNINGS	21
REGULATORY COMPLIANCE	22
DISPOSAL INFORMATION	24
FEATURES	24
TECHNICAL SPECIFICATIONS	25

INTRODUCTION

INTRODUCTION

The Geemarc CL7370NL Digital Wireless Audio Listener is an audio amplification system specifically designed for people with hearing loss who wear a hearing aid with the T position.

The Geemarc CL7370NL Audio Listener can be used with all kinds of audio systems for interference-free listening enjoyment – **TV set, Smartphone, DVD player, CD player, Hi-Fi system, iPod or other.**

Audio output from a TV or audio device is transmitted by the Charging Cradle (Base: **CL7370TX**), the wireless receiver (**CL7370NL_RX**) receives the signal and amplifies the audio sound for the listener.

One Base (**CL7370TX**) can support 2 receivers (**CL7370NL_RX**) for charging.

The listener's comfort and long-term enjoyment has been built into every feature of the Geemarc Wireless Audio Listener:

- Lightweight wireless headset fitted with a neck loop for prolonged listening comfort;
- Rich, adjustable audio quality:
 - Broad audio bandwidth, High quality sound.
 - Adjustable EQ and balance (not in loop mode, only mono sound) to compensate for hearing loss.
- Listen but keep in touch with your surroundings:
 - Multiple receivers can be paired with one Charging Cradle;
 - Single-touch Mute function switches the Audio Listener into a conversation assistant enabling you to talk with and listen to the people around you with the Headset on, taking advantage of its built-in audio amplifier to hear everything better.

Introduction

- Up to 11 hours of rechargeable battery life per full charge – never lose the soundtrack in mid-program;
- Only 3 hours to fully recharge the receiver simply by replacing the receiver in its Charging Cradle.
- Auto Power OFF receiver simply by replacing the receiver in its Charging Cradle.
- Auto Power ON receiver by simply removing the receiver from its Charging Cradle within 5 minutes.

IMPORTANT NOTICES:

CL7370NL extra receiver (**CL7370NL_RX**). Please refer to the section “**Pairing an extra receiver**” for special operation.

SAFETY & CARE ADVICE



SAFETY & CARE ADVICE

To make the best use of this product and to use it safely, please read these instructions thoroughly before use and keep safe for future reference.

Warning: This product can be very loud. Take care to prevent others from using this product, if they do not have the same level of hearing loss. Excessive sound pressure from earphones and headphones can cause hearing loss.

Caution: Electric shock. DO NOT insert unattached plug heads in to mains power sockets. Plug heads **MUST** be fitted to the power adaptor.

Electrical connection: The unit is designed to operate from a 100-240VAC - 50/60Hz supply. (Classified as 'hazardous voltage' according to EN 62368-1 standard).

Caution: Batteries should only be replaced by Geemarc or authorised Vendor. Please refer to the chapter: <Spare / replacement parts> for more information.

Keep the unit away from heat sources.



DO NOT expose the unit to direct sunlight.

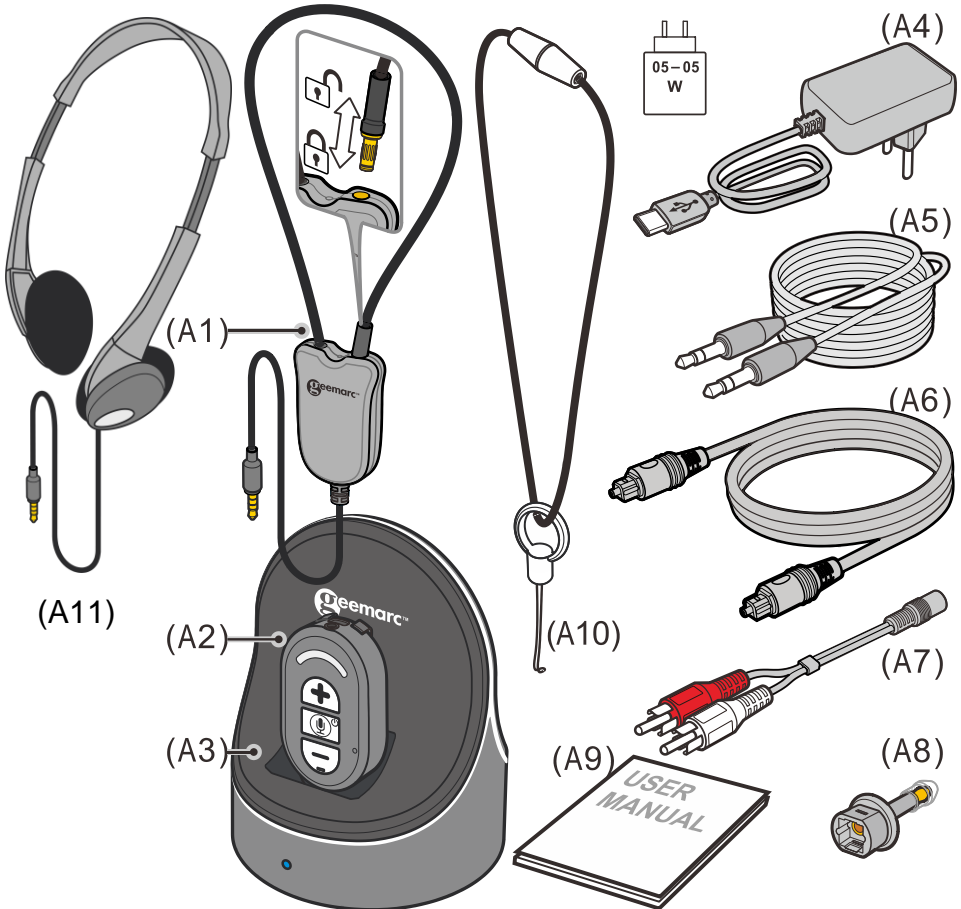
Do not expose the receiver, which contains batteries, to excessive heat such as sunshine, fire etc.

DO NOT modify the unit in any way.

Please note: The unit may be subject to interference from appliances that generate strong electrical or magnetic fields e.g. wireless Internet routers, microwaves, mobile phones, lighting transformers etc. To avoid this interference, place the Charging Cradle unit away from such sources.

PACK COMPONENTS

PACK COMPONENTS



(A1) Neck loop (**CLA7-1**)

(A2) Receiver (**CL7370NL_RX**)

(A3) Charging Cradles and Transmitter (**CL7370TX**)

(A4) Power Supply

(A5) Audio Cable (both ends with 3.5 mm stereo plug)

(A6) Toslink Cable for Optical Digital Audio Connection.

IMPORTANT: Before using the cable remove the clear plastic protective covers from both ends.

(A7) 3.5mm to 2 pin RCA Adapter Cable

(A8) Mini optical jack

(A9) User guide

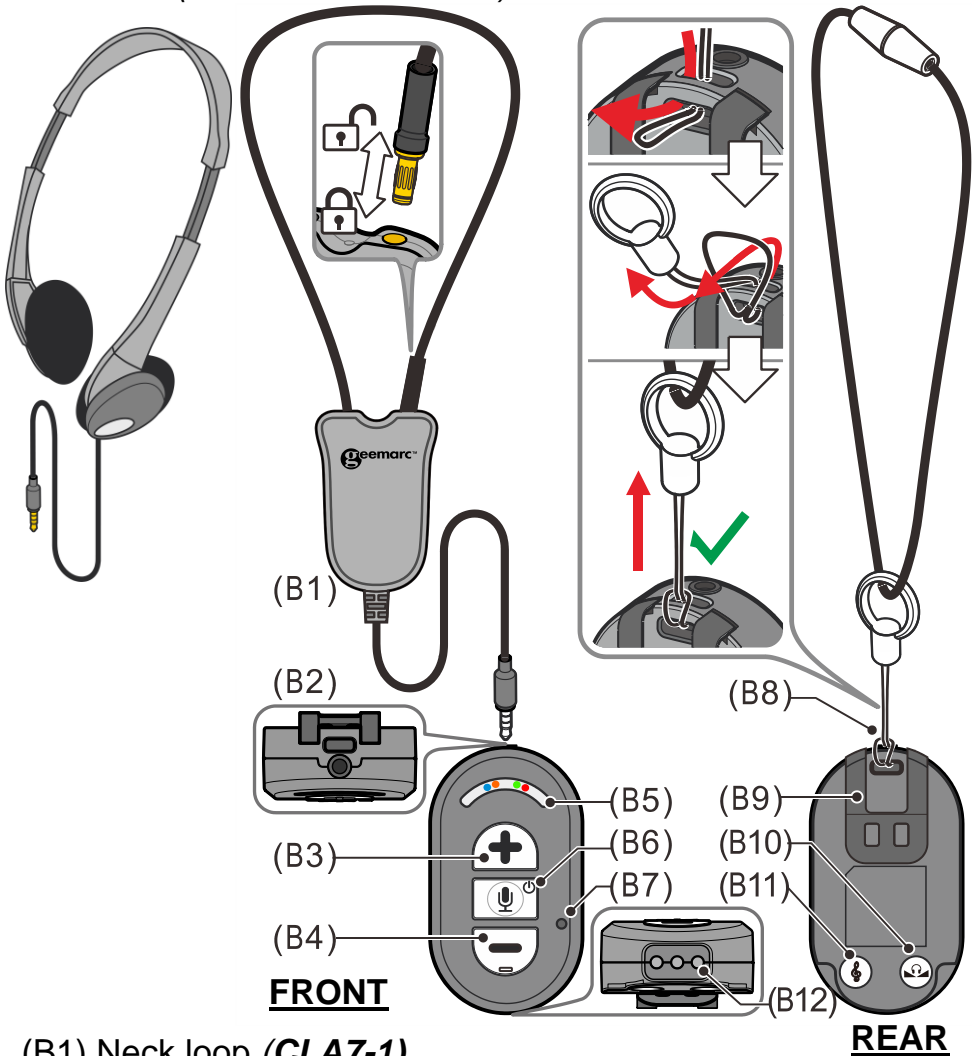
(A10) Lanyard for receiver

(A11) Headphone (**CLA7-2**)

FUNCTION IDENTIFICATION

FUNCTION IDENTIFICATION

Receiver (Ref. CL7370NL_RX)



(B1) Neck loop (**CLA7-1**)

(B2) Jack 3.5mm to connect the neck loop

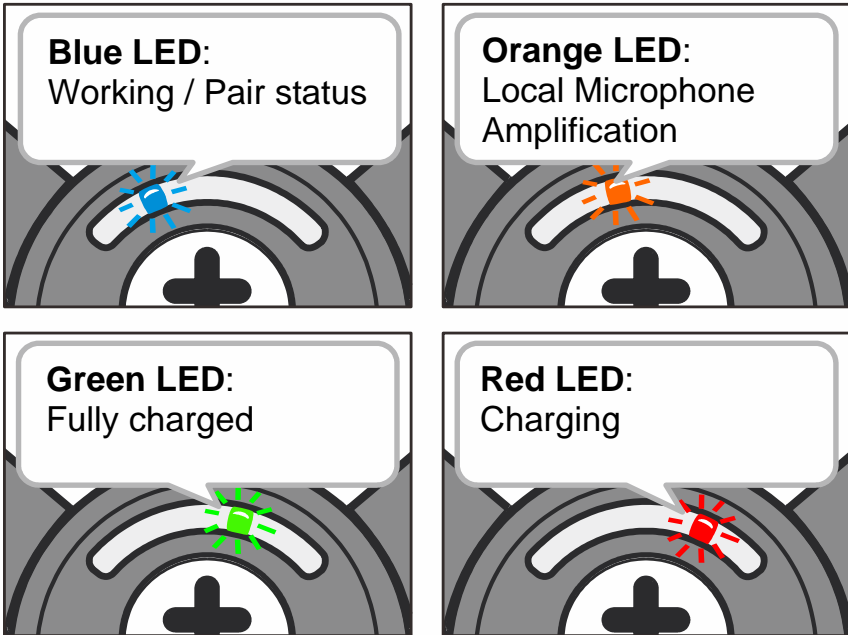
(B3) Volume Increase Control, Balance Control

(B4) Volume Decrease Control, Balance Control

(B5) Power/Signal/Charging/Local Microphone LED Indicators:

FUNCTION IDENTIFICATION

- Battery Charge (**Red** = charging, **Green** = fully charged)
- LED Indicator (**Orange**): Local Microphone Amplification for Verbal Communications.
- LED Indicator (**Blue lights up**): Paired with Transmitter.
- LED Indicator (**Blue Slow flashing**): Not Paired with Transmitter, or Transmitter is powered off.
- LED Indicator (**Blue Fast flashing**): in Pairing Mode.



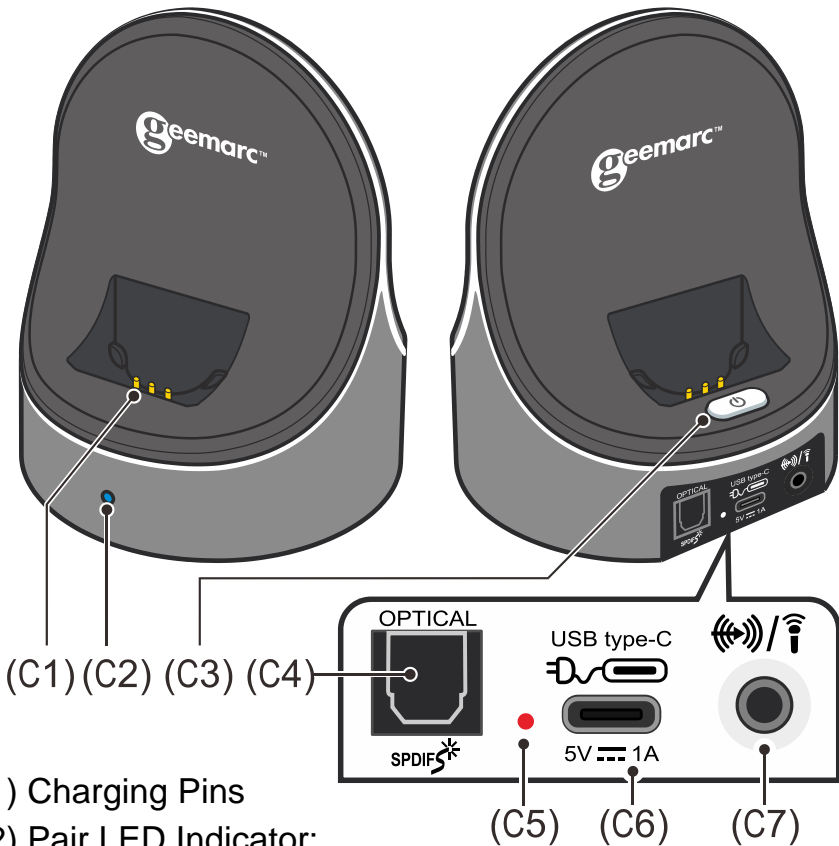
- (B6) Power Button and Mute Button for Verbal Communications
- Long press to Power OFF headset.
 - Short press to Power ON headset.
 - Short press to switch between wireless TV listening and Local Microphone amplification for Verbal Communications.
- (B7) Microphone
- (B8) Lanyard
- (B9) Belt clip
- (B10) Sound Balance Control
- (B11) Tone Adjustment
- (B12) Load Contacts

FUNCTION IDENTIFICATION

Base Charging Cradles (Transmitter: **CL7370TX**)

FRONT

REAR



(C1) Charging Pins

(C2) Pair LED Indicator:

- **Blue Lights up** - Paired receivers found;
- **Blue Slow flashing** - Not paired devices found;
- **Blue Fast flashing** - Not paired devices found or No sound input for more than 10 minutes.

(C3) Power Switch

(C4) Optical Digital Audio In

(C5) Power ON/OFF LED Indicator: **Red** = Power ON.

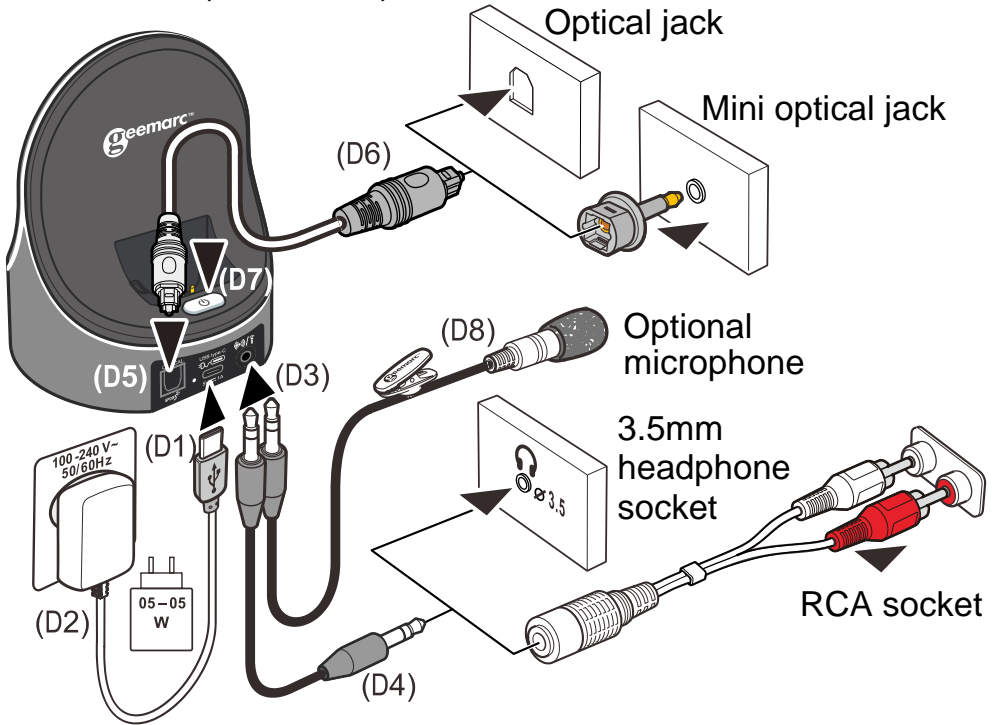
(C6) Power input port USB type C 5V/1A

(C7) Analogue Audio In, external microphone input (3.5 mm 4-pin OMTP connector) (optional)

INSTALLATION

INSTALLATION

Transmitter (CL7370TX)



- (D1) Connect the Power Supply to USB type C port (5V/1A) located on the Charge Cradle rear panel.
- (D2) Connect the Power Supply to an electricity socket (100-240V ~ 50/60Hz).
- (D3) Connect one end of the Audio Cable to Analogue Audio Input in the rear panel of the Charge Cradle.
- (D4) Connect the other end of the Audio Cable to your Audio Source (e.g. TV set, Hi-Fi system, MP3 or iPod).
If your Audio Source does not have a suitable socket for the Audio Cable's 3.5 mm stereo plug, then use one of the Adapters provided:
- RCA Adapter Cable; **or**
- (D5) Connect one end of the **Toslink Cable** to Digital Audio Input in the rear panel of the Charge Cradle.

(D6) Connect the other end of the **Toslink Cable** to your Audio Source with optical digital audio output (e.g. TV set, Hi-Fi system).

If you need, you can use the **micro Toslink jack** to connect at your audio source.

(D7) On the rear side of the Charging Cradle, press the Power ON/OFF button to Switch to ON, the red LED will light up.

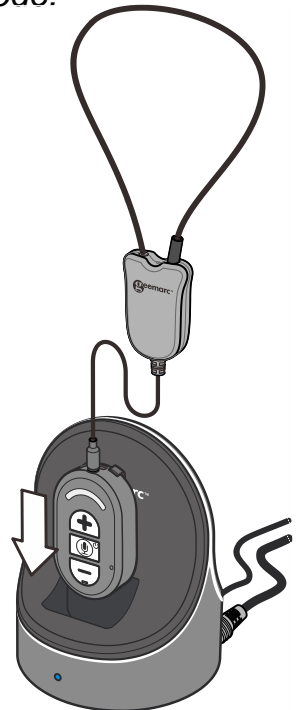
(D8) Connect the optional microphone to the back of the C7 charging cradle, then place the microphone near your TV speaker or any sound source.

Note: When using CL7370NL Digital Version with a digital audio input signal the TV audio output must be set to PCM mode. CL7370NL is not compatible with Dolby Digital. The PCM setting can normally be done using the audio menu settings of the TV. Please refer to your TV/DVD/Satellite/Cable Box user's manual for instructions for setting to PCM mode.

Receiver (CL7370NL_RX)

Make sure the built-in Battery inside the receiver is fully charged for the first use – see Initial Operation below.

- Connect your **neck loop (CLA7-1)** in the jack 3.5mm or the **Headphone (CLA7-2)**.
- Place your neck loop around the neck.
- Set your hearing aid on T position.
- **NOTE:** The induction neck loop has an "easy-break" plug and socket (refer to the sketch on page 7 and 8). Should the loop become tangled or you are having difficulty removing the loop from around your neck simply pull on the loop near the easy-break and it will come free easily.

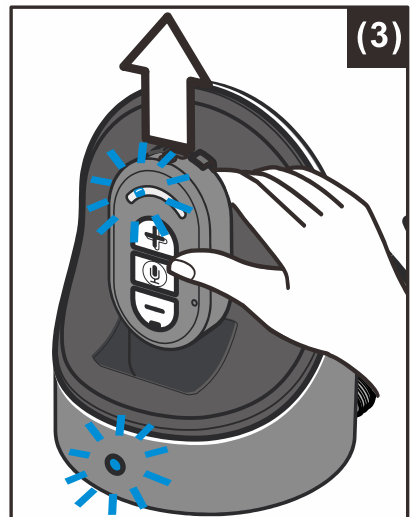
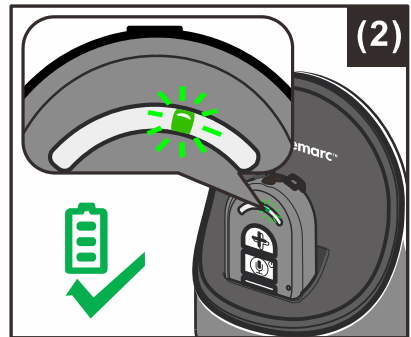
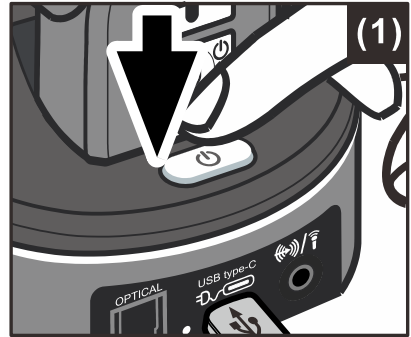


OPERATION

OPERATION

Initial Operation

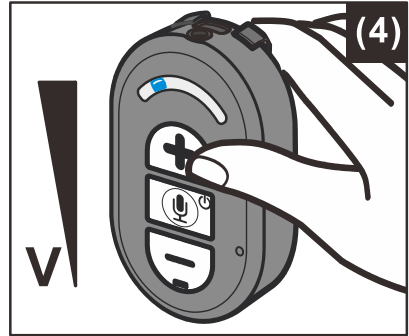
1. Make sure the charging cradle is plugged into the main.
2. Switch ON the charging cradle on the back of the Charging Cradle (see figure (1) on the right).
3. Place the receiver in the Charging Cradle for at least three hours to allow it to fully charge.
 - The receiver is switched OFF automatically when it is placed in the Charging Cradle.
 - The LED Indicator shows red during charging.
 - It will glow green when the battery is fully charged (see figure (2) on the right).
4. After three hours and when the charging LED has turned green, you can proceed to the Routine Operation.



Routine Operation

1. Turns ON the Audio Source (TV set or audio device) where the Transmitter is connected to.
2. Take out the Receiver from the charging cradle, receiver will turn ON automatically, (if not, short press the MIC button to power on the receiver). The blue signal LED Indicator both on Base and receiver will glow continuously. (See figure (3) on the right).

3. Adjust the Volume to the desired sound level (see figure (4) on the right), Press '+' button to increase volume and '-' button to decrease volume. Neck loop sends beeps at your hearing aid when volume reaches maximum or minimum.



NOTE: Make sure the volume on your Audio Source (TV set or other audio device) is turned up to at least half of its full volume to get good sound quality in your hearing aid.



NOTE:

1. The receiver will turn off automatically if there is no audio signal from the audio source (TV set, etc.) or a too weak signal within about **15 minutes**, if you want to resume receiver in this case, you can short press the MIC Button to Power on the receiver.
2. Auto Power OFF receiver simply by replacing the receiver in its Charging Cradle.
3. Auto Power ON receiver simply by removing the receiver from its Charging Cradle. - This is only available when a Power on receiver is replaced into Charging Cradle.
4. If you place a power off receiver into its charging cradle, the receiver cannot be Powered on automatically when you take it again. In this case, just short press MIC button to Power on receiver.

OPERATION

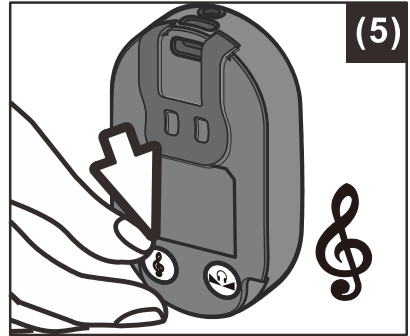
Controlling the Tone (Bass & Treble)

You can adjust the tone of the audio you are listening and to enhance your listening pleasure by amplifying either the Treble or the Bass in the Neck Loop Receiver.

Press the Tone Button on the rear of receiver to switch cyclically between:

1. Enhanced bass,
2. Enhanced treble,
3. Flat tone (bass and treble equally enhanced).

Neck loop beeps when tone adjustment reaches the default setting (the flat tone).

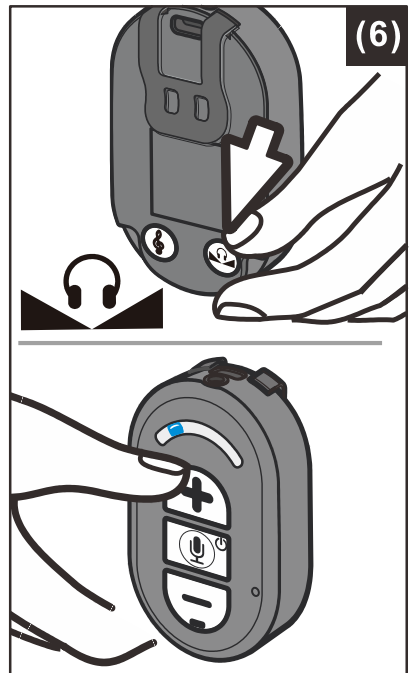


Adjusting the Sound Balance (left-right, function available only with headphone instead of Neck loop)

You can adjust the sound to suit your hearing in each ear. With the receiver on, press the Balance Button on the rear of receiver to enter balance mode. Press '+' button to decrease sound on **RIGHT** side. Press '-' button to decrease sound on **LEFT** side (see figure 6 on the right).

Receiver beeps when balance reaches maximum, middle or minimum. Press Balance Button again to exit balance mode and come back to the normal mode.

Note: if you forget to exit balance mode for more than 6 seconds, unit will come back to normal mode automatically.

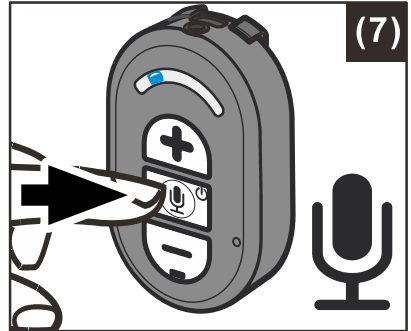


Using the MIC Button for Conversation

You can switch from Listening mode to room ambient mode without having to take off the Neck loop.

To talk or listen someone:

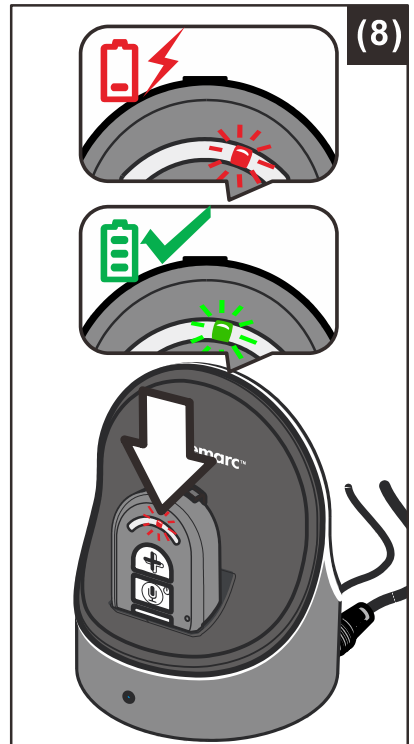
1. Short Press the MIC button (see figure (7) on the right). This will shut off the Audio Source and the receiver will become an amplifier by activating the Microphone.
2. To resume listening to your audio device, short press the Mute button again. The microphone will be shut off and the audio will resume.



Note: long press the Mute button will power off the receiver, simply short press the Mute button again to resume receiver.

Charging the Battery

1. The neck loop will send some beeps when the battery level is low. At this stage there are about 20 minutes of operating time before the receiver will switch off. Recharge the battery.
2. Place the receiver on the Charging Cradle (see figure (8) on the right), make sure the charge contact touches the charge pins on the Charging Cradle.
3. The Charging process starts automatically.
 - The LED Indicator glows red during charging.
 - It will glow green after the battery is fully charged.



OPERATION

WARNING:

The battery must not be exposed to excessive heat such as sunshine, fire etc.

Do not attempt to replace the original rechargeable battery.

The battery must always be fully charged before first use. An initial charge of 3 hours is required to ensure acceptable battery life. Excessive sound pressure from earphones and headphones can cause hearing loss.

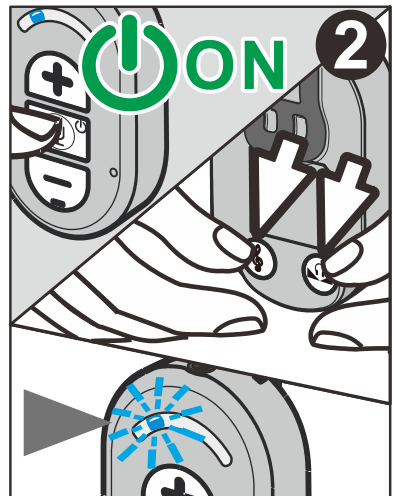
IMPORTANT:

This unit should be operated with built-in rechargeable battery only. When replacing the battery or when disposing of the unit, always comply with applicable laws relating to the disposal of battery. Please place them in a proper disposal container to ensure that they are eliminated safely and in an environmentally friendly way.

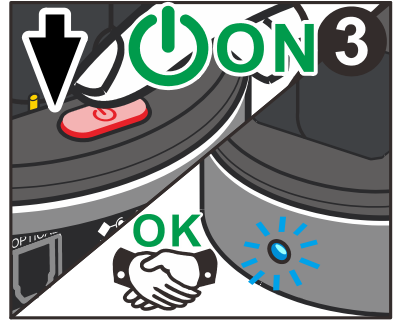
Pairing an extra Receiver:

To pair Base and receiver ensure battery is fully charged and the Base is connected to mains power (see section "**Initial Operation**" for receiver charging). Proceed as follows:

1. Power off all the paired receivers by pressing 3 seconds the Mic button. Switch off the Base by pressing the rear button (Fig.1).
2. Take and Power ON the extra receiver then press and hold down the "**TONE**" and "**BALANCE**" buttons at same time until the **blue** LED in the receiver front is in fast flashing, then release the buttons.



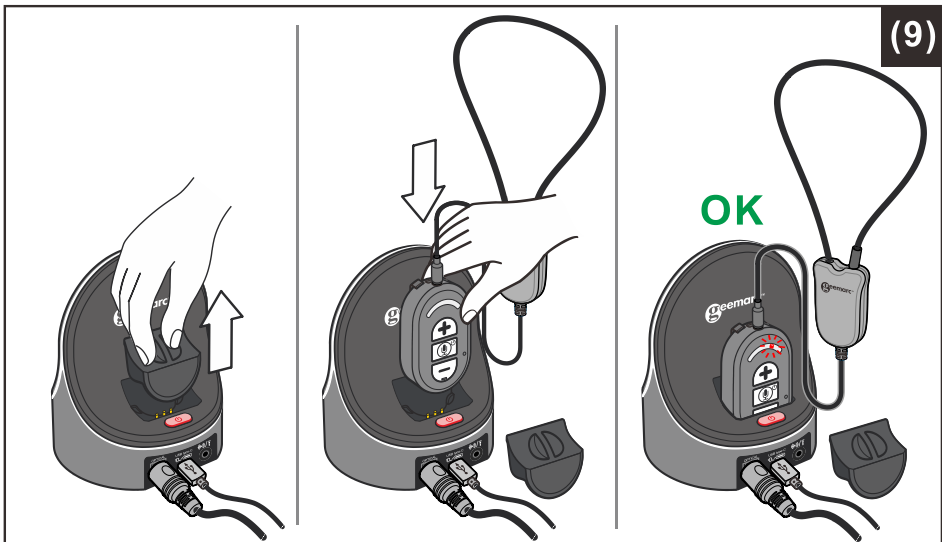
3. Switch **ON** the base and the **blue** LED start fast flashing, When the **blue** LED stop flashing and lights up, the pairing is complete automatically.



Note:

1. After the Receiver enter pairing mode, you must switch on the base as soon as possible (within 20 seconds).
2. If the pairing process is not successful, please power off the receiver and base, then repeat the pairing process again.

The extra receiver can be charged in the rear charging cradle on the base, in this case, you should remove the cover of rear charging cradle and place the extra headset on the rear charging cradle. See figure (9)



TROUBLESHOOTING



TROUBLESHOOTING

No Sound

- Ensure the power supply is properly plugged into the electricity socket and that its cable is properly connected to **USB type C** connector 5V/1A on the Charge Cradle.
- Ensure that the receiver is switched ON (fix Blue Led) and that the charge cradle red LED is switched on.
- Ensure that your hearing aid is set on T position
- Check the state of the Battery charging in the receiver – place it in the Charge Cradle and recharge the battery until the Battery Charge LED turns green.
- Ensure that the TV set, Hi-Fi system or audio component is switched ON and set to a channel that broadcasts an audio signal.
- Ensure that the volume on the connected audio component is turned up to at least half its full volume.
- The connected audio/video equipment may not be in playback mode. Start playback on by the equipment.
- Use the + button on the receiver to turn up the volume.

Distortion

- The battery inside receiver may need charging. Recharge the battery.
- The receiver may be too far away from the transmitter inside the Charge Cradle. Bring them closer together.
- The audio signal input level from the audio source is too low. Increase the volume on the audio source.

Cleaning & Maintenance

Note: DO NOT use alcohol, chemical or spirit-based cleaning agents.

Wipe Base, receiver and neck loop clean with a damp cloth.

Spare/replacement parts

Spare parts are available from either the original place of purchase or by calling the Customer Helpline Telephone:

01707 387602 (lines are open from **10:00-12:00** then **13:00-14:30** Monday to Friday)

1. Additional receivers (*CL7370NL_RX*)
2. External Microphone

To replace the receiver battery, please contact Customer Support.

Customer support

For product support and help, visit our website at **www.geemarc.com**

E-mail: **help@geemarc.com**

For our Customer Helpline Telephone: **01707 387602**

(Lines are open from **10:00-12:00** then **13:00-14:30** Monday to Friday)

GUARANTEE. UKCA / CE DECLARATIONS. BATTERY WARNINGS

GUARANTEE

From the moment your Geemarc CL7370TX product is purchased, Geemarc guarantee it for the period of two years. During this time, all repairs or replacements (at our discretion) are free of charge. Should you experience a problem then contact our Helpline or visit our website at www.geemarc.com. The guarantee does not cover accidents, negligence or breakage to any parts. The product must not be tampered with or taken apart by anyone who is not an authorised Geemarc representative.

The Geemarc guarantee in no way limits your legal rights.

Important: YOUR RECEIPT IS PART OF YOUR GUARANTEE AND MUST BE RETAINED AND PRODUCED IN THE EVENT OF A WARRANTY CLAIM.

UKCA/ CE DECLARATION

Geemarc Telecom SA hereby declares that this CL7370TX is in compliance with the essential requirements and other relevant provisions of the Radio Equipment Directive 2014/53/UE.

The declaration of conformity may be consulted at www.geemarc.com



BATTERY WARNINGS

- **DO NOT** attempt to dismantle.
- **DO NOT** dispose of in fire.
- **DO NOT** swallow.
- Keep away from children.
- **DO NOT** short-circuit the Battery Contact terminals.
- Exhausted batteries are to be replaced only by a certified Geemarc service technician.
- **Caution:** Risk of explosion if battery is replaced incorrectly or if the wrong type of battery is used. Dispose of used batteries according to the instructions.



REGULATORY COMPLIANCE

FCC compliance

This device complies with Part 15 of the FCC Rules. Operation is subject to the following two conditions:

**(1) This device may not cause harmful interference, and
(2) this device must accept any interference received, including interference that may cause undesired operation.**

NOTE 1: This equipment has been tested and found to comply with the limits for a Class B digital device, pursuant to part 15 of the FCC Rules. These limits are designed to provide reasonable protection against harmful interference in a residential installation. This equipment generates, uses and can radiate radio frequency energy and, if not installed and used in accordance with the instructions, may cause harmful interference to radio communications. However, there is no guarantee that interference will not occur in a particular installation. If this equipment does cause harmful interference to radio or television reception, which can be determined by turning the equipment off and on, the user is encouraged to try to correct the interference by one or more of the following measures:

- Reorient or relocate the receiving antenna.
- Increase the separation between the equipment and receiver.
- Connect the equipment into an outlet on a circuit different from that to which the receiver is connected.
- Consult the dealer or an experienced radio/TV technician for help.

NOTE 2: Any changes or modifications to this unit not expressly approved by the party responsible for compliance could void the user's authority to operate the equipment.

Regulatory compliance

RF Exposure Statement

To maintain compliance with FCC'S RF Exposure guidelines, this equipment should be installed and operated with minimum 20cm between the radiator and your body. This device and its antenna(s) must not be co-located or operation in conjunction with any other antenna or transmitter.

NOTICE: This class B digital apparatus complies with Canadian ICES-003. This product meets the applicable Industry Canada technical specifications.

CAN ICES-3B/NMB-3B

FCC ID: 2A9CR-CL7370

IC: 29704-CL7370NL

29704-CL7370Opt

DISPOSAL INFORMATION



Disposal of old electrical & electronic equipment (applicable in the European Union and other European countries with separate collection systems)

The symbol on the product or its packaging indicates that this product may not be treated as household waste. Instead it should be handed over to the applicable collection point for the recycling of electrical and electronic equipment.

By ensuring this product is disposed of correctly, you will help prevent potential negative consequences for the environment and human health, which could otherwise be caused by inappropriate waste handling of this product.

For more detailed information about recycling this product, please contact your local council office, your household waste disposal service or the shop where the product was purchased.


FEATURES:

1. Digital 2.4 GHZ AFHSS transmission (Adaptive Frequency Hopping)-CD sound quality!
2. 16 hopping channels.
3. Receiving amplification: up to 120 dBspl.
4. Frequency response: 100- 16000Hz.
5. Operating indoor range up to 25 meters from the transmitter.
6. Continuous usage time: up to 11 hours.
7. Charged when you need it. Receiver recharges itself when placed back into Base unit.
8. Receiver Auto Power OFF when placed back into Base unit.
9. Receiver Auto Power ON when took from the Base unit.
10. 3.5mm audio input stereo jack access in Base unit.
11. Optical Digital audio input jack access in Base unit.

TECHNICAL SPECIFICATIONS

12. Receiver weight: 38g.

TECHNICAL SPECIFICATIONS

Transmission mode	: Digital 2.4GHz AFHSS (Adaptive Frequency Hopping) – CD sound quality!
Carrier frequency	: 2.4GHz
Frequency response	: 100 Hz – 16000 Hz
Hopping channels	: 16
Receiving amplification	: up to 120 dBspl
Range	: Up to 25 meters (open area)
Receiver weight	: 38 grams
Operating voltaje	: Charging Cradle: DC 5V  1.0A, 5W : Receiver: 3.7V, 900mAh Lithium Polymer Battery
Battery operating Time	: Up to 11 Hours
Radio Frequency Power	: <20 dbm



For product support and help visit our website at
www.geemarc.com

Parc de l'étoile, 2 rue Galilée, 59760 Grande-Synthe, France

E-mail : help@geemarc.com

Telephone : **01707 387602**

lines are open from **10:00-12:00** then **13:00-14:30** Mon. to Fri.

Made for Geemarc Telecom S.A. in China



© 16 April 2025



UGCL7370TX_OP_En_v1.1